

## Product datasheet for **TA502178AM**

### MMAB Mouse Monoclonal Antibody (Biotin conjugated) [Clone ID: OTI2G5]

#### Product data:

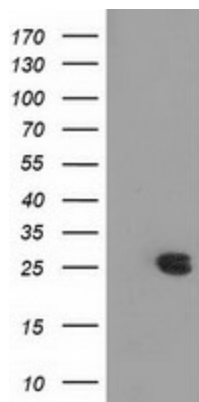
|                         |  |
|-------------------------|--|
| Product Type:           | Primary Antibodies   |
| Clone Name:             | OTI2G5   |
| Applications:           | FC, IHC, WB  |
| Recommended Dilution:   | WB 1:2000, IHC 1:150, FLOW 1:100   |
| Reactivity:             | Human, Mouse, Rat  |
| Host:                   | Mouse  |
| Isotype:                | IgG1   |
| Clonality:              | Monoclonal   |
| Immunogen:              | Full length human recombinant protein of human MMAB (NP_443077) produced in HEK293T cell.  |
| Formulation:            | PBS (pH 7.3) containing 1% BSA, 50% glycerol and 0.02% sodium azide.   |
| Concentration:          | 0.5 mg/ml  |
| Purification:           | Purified from mouse ascites fluids or tissue culture supernatant by affinity chromatography (protein A/G)  |
| Conjugation:            | Biotin   |
| Storage:                | Store at -20°C as received.  |
| Stability:              | Stable for 12 months from date of receipt.   |
| Predicted Protein Size: | 24.0 kDa   |
| Gene Name:              | metabolism of cobalamin associated B   |
| Database Link:          | <a href="#">NP_443077</a><br><a href="#">Entrez Gene 326625 Human</a><br><a href="#">Q96EY8</a>  |
| Background:             | This gene encodes a protein that catalyzes the final step in the conversion of vitamin B(12) into adenosylcobalamin (AdoCbl), a vitamin B12-containing coenzyme for methylmalonyl-CoA mutase. Mutations in the gene are the cause of vitamin B12-dependent methylmalonic aciduria linked to the cblB complementation group. [provided by RefSeq] |
| Synonyms:               | ATR; cblB; CFAP23; cob   |



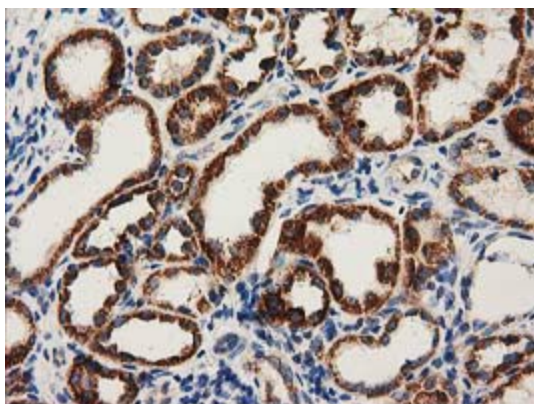
[View online »](#)

**Protein Pathways:** Metabolic pathways, Porphyrin and chlorophyll metabolism

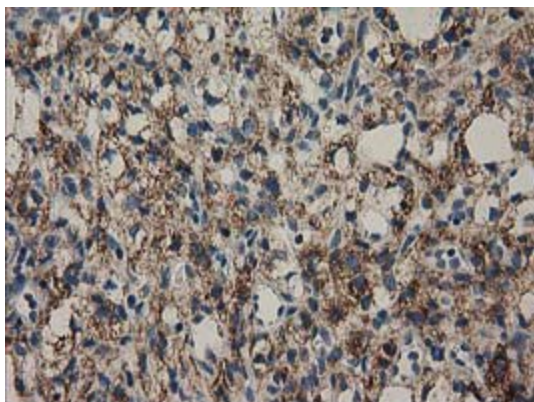
**Product images:**



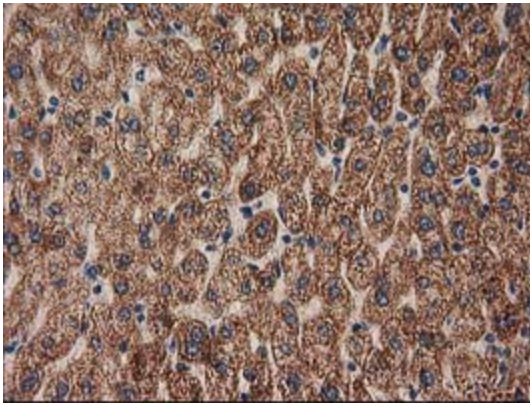
HEK293T cells were transfected with the pCMV6-ENTRY control (Cat# [PS100001], Left lane) or pCMV6-ENTRY MMAB (Cat# [RC204290], Right lane) cDNA for 48 hrs and lysed. Equivalent amounts of cell lysates (5 ug per lane) were separated by SDS-PAGE and immunoblotted with anti-MMAB(Cat# [TA502178]). Positive lysates [LY409455] (100ug) and [LC409455] (20ug) can be purchased separately from OriGene.



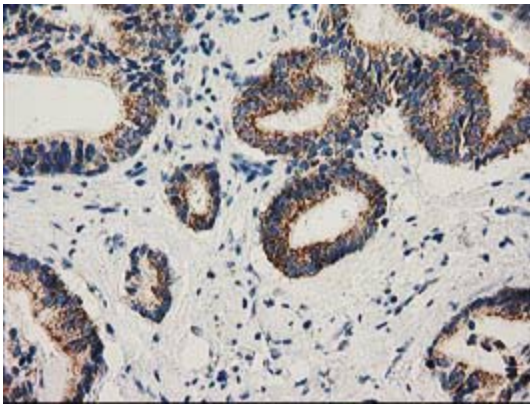
Immunohistochemical staining of paraffin-embedded Human Kidney tissue within the normal limits using anti-MMAB mouse monoclonal antibody. (Heat-induced epitope retrieval by 10mM citric buffer, pH6.0, 100°C for 10min, [TA502178])



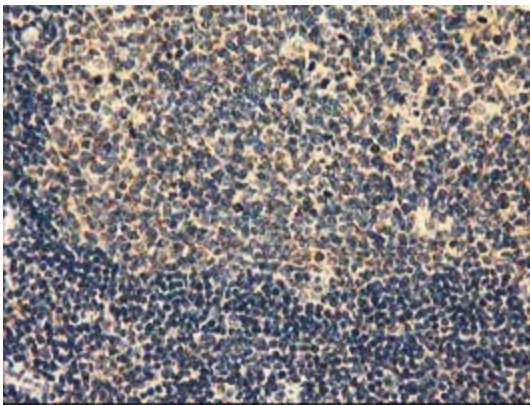
Immunohistochemical staining of paraffin-embedded Carcinoma of Human kidney tissue using anti-MMAB mouse monoclonal antibody. (Heat-induced epitope retrieval by 10mM citric buffer, pH6.0, 100°C for 10min, [TA502178])



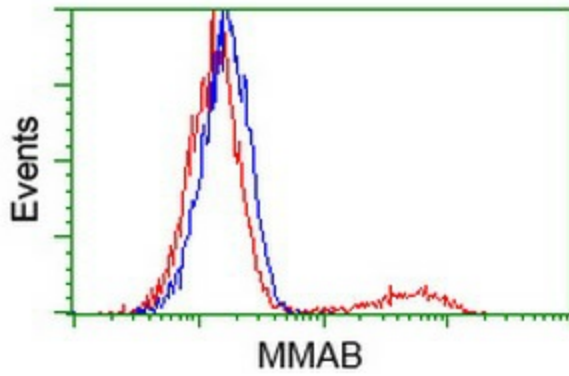
Immunohistochemical staining of paraffin-embedded Human liver tissue within the normal limits using anti-MMAB mouse monoclonal antibody. (Heat-induced epitope retrieval by 10mM citric buffer, pH6.0, 100°C for 10min, [TA502178])



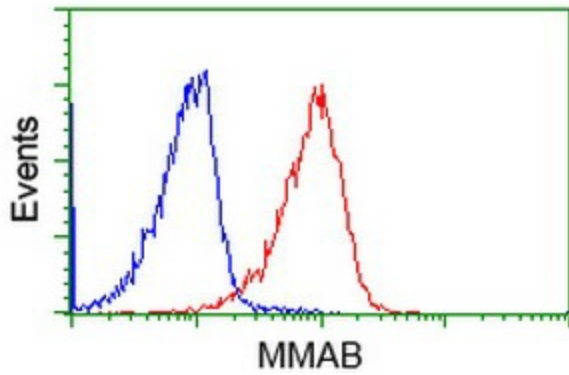
Immunohistochemical staining of paraffin-embedded Carcinoma of Human prostate tissue using anti-MMAB mouse monoclonal antibody. (Heat-induced epitope retrieval by 10mM citric buffer, pH6.0, 100°C for 10min, [TA502178])



Immunohistochemical staining of paraffin-embedded Human lymph node tissue within the normal limits using anti-MMAB mouse monoclonal antibody. (Heat-induced epitope retrieval by 10mM citric buffer, pH6.0, 100°C for 10min, [TA502178])



HEK293T cells transfected with either [RC204290] overexpress plasmid (Red) or empty vector control plasmid (Blue) were immunostained by anti-MMAB antibody ([TA502178]), and then analyzed by flow cytometry.



Flow cytometric Analysis of Jurkat cells, using anti-MMAB antibody ([TA502178]), (Red), compared to a nonspecific negative control antibody (TA50011), (Blue).