

## Product datasheet for **TA502177S**

### HDAC6 Mouse Monoclonal Antibody [Clone ID: OTI3E7]

#### Product data:

|                         |   |
|-------------------------|---|
| Product Type:           | Primary Antibodies  |
| Clone Name:             | OTI3E7  |
| Applications:           | FC, IHC, WB   |
| Recommended Dilution:   | WB 1:500~1000, IHC 1:150, FLOW 1:100  |
| Reactivity:             | Human, Monkey   |
| Host:                   | Mouse   |
| Isotype:                | IgG1  |
| Clonality:              | Monoclonal  |
| Immunogen:              | Full length human recombinant protein of human HDAC6 (NP_006035) produced in HEK293T cell.  |
| Formulation:            | PBS (pH 7.3) containing 1% BSA, 50% glycerol and 0.02% sodium azide.  |
| Concentration:          | 0.61 mg/ml  |
| Purification:           | Purified from mouse ascites fluids or tissue culture supernatant by affinity chromatography (protein A/G)   |
| Conjugation:            | Unconjugated  |
| Storage:                | Store at -20°C as received.   |
| Stability:              | Stable for 12 months from date of receipt.  |
| Predicted Protein Size: | 131.2 kDa   |
| Gene Name:              | histone deacetylase 6   |
| Database Link:          | <a href="#">NP_006035</a><br><a href="#">Entrez Gene 711363 Monkey</a> <a href="#">Entrez Gene 10013 Human</a><br><a href="#">Q9UBN7</a>  |
| Background:             | Histones play a critical role in transcriptional regulation, cell cycle progression, and developmental events. Histone acetylation/deacetylation alters chromosome structure and affects transcription factor access to DNA. The protein encoded by this gene belongs to class II of the histone deacetylase/acuc/apha family. It contains an internal duplication of two catalytic domains which appear to function independently of each other. This protein possesses histone deacetylase activity and represses transcription. [provided by RefSeq] |

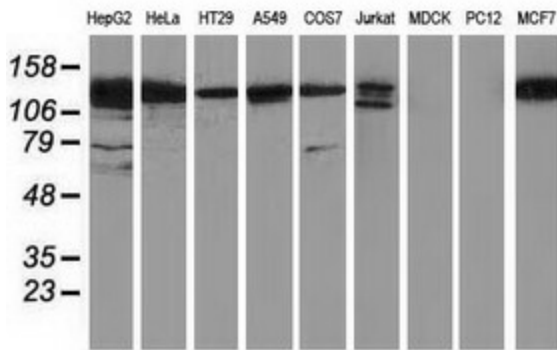


[View online »](#)

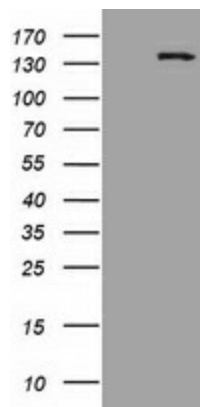
**Synonyms:** CPBHM; HD6; JM21; PPP1R90

**Protein Families:** Druggable Genome, Transcription Factors

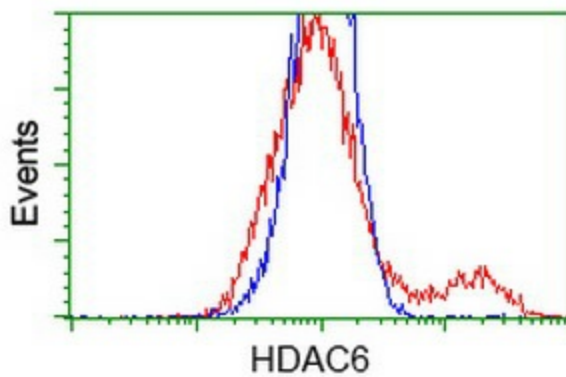
**Product images:**



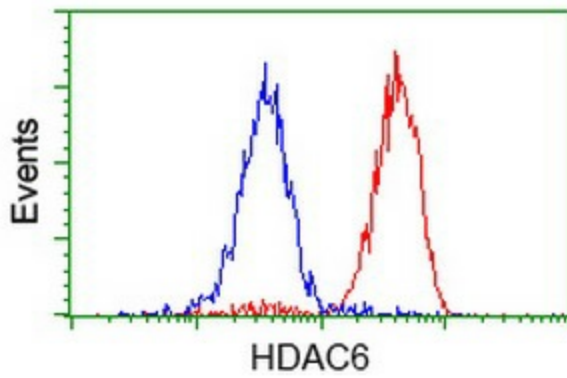
Western blot analysis of extracts (35ug) from 9 different cell lines by using anti-HDAC6 monoclonal antibody.



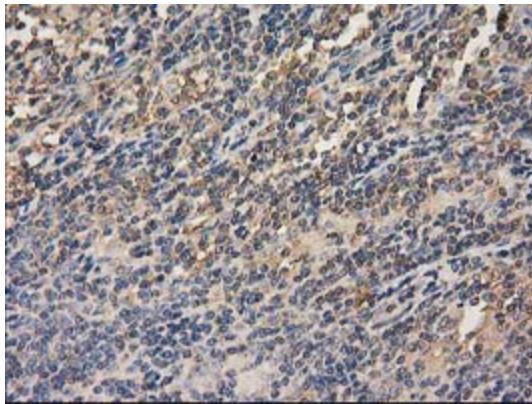
HEK293T cells were transfected with the pCMV6-ENTRY control (Left lane) or pCMV6-ENTRY HDAC6 [RC209649], Right lane) cDNA for 48 hrs and lysed. Equivalent amounts of cell lysates (5 ug per lane) were separated by SDS-PAGE and immunoblotted with anti-HDAC6. Positive lysates [LY401822] (100ug) and [LC401822] (20ug) can be purchased separately from OriGene.



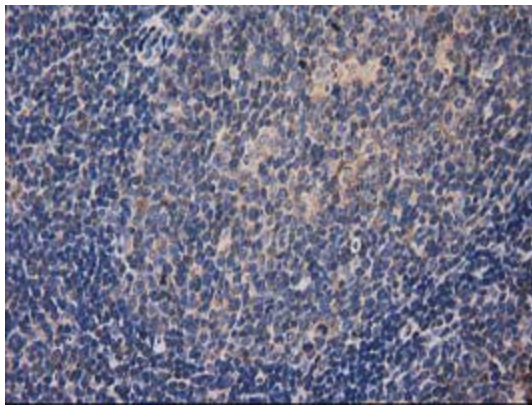
HEK293T cells transfected with either [RC209649] overexpress plasmid (Red) or empty vector control plasmid (Blue) were immunostained by anti-HDAC6 antibody ([TA502177]), and then analyzed by flow cytometry.



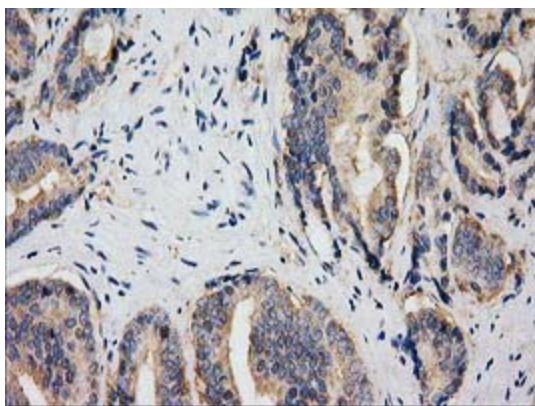
Flow cytometric Analysis of HeLa cells, using anti-HDAC6 antibody ([TA502177]), (Red), compared to a nonspecific negative control antibody (TA50011), (Blue).



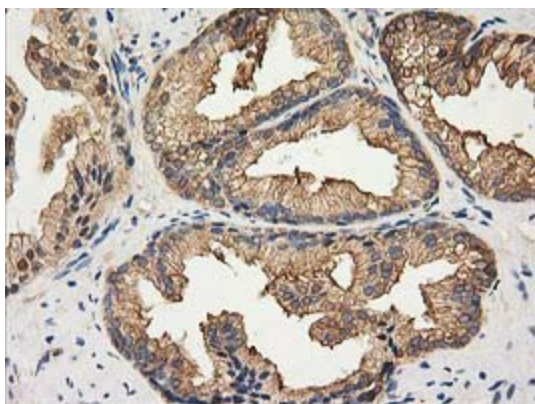
Immunohistochemical staining of paraffin-embedded Human lymphoma tissue using anti-HDAC6 mouse monoclonal antibody. (Heat-induced epitope retrieval by 10mM citric buffer, pH6.0, 100°C for 10min, [TA502177])



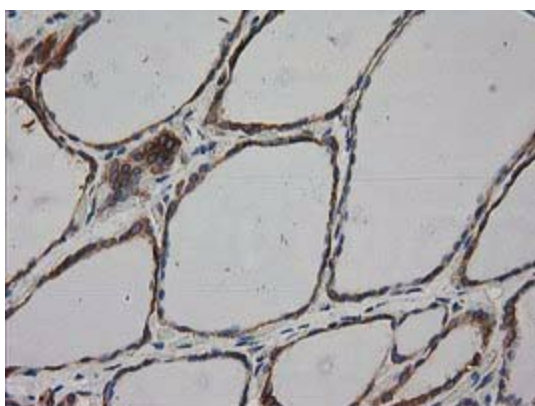
Immunohistochemical staining of paraffin-embedded Human lymph node tissue within the normal limits using anti-HDAC6 mouse monoclonal antibody. (Heat-induced epitope retrieval by 10mM citric buffer, pH6.0, 100°C for 10min, [TA502177])



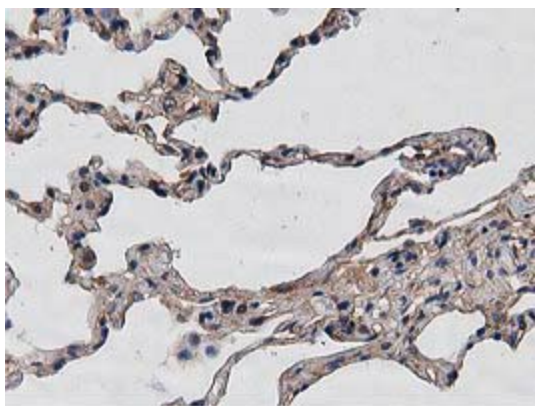
Immunohistochemical staining of paraffin-embedded Carcinoma of Human prostate tissue using anti-HDAC6 mouse monoclonal antibody. (Heat-induced epitope retrieval by 10mM citric buffer, pH6.0, 100°C for 10min, [TA502177])



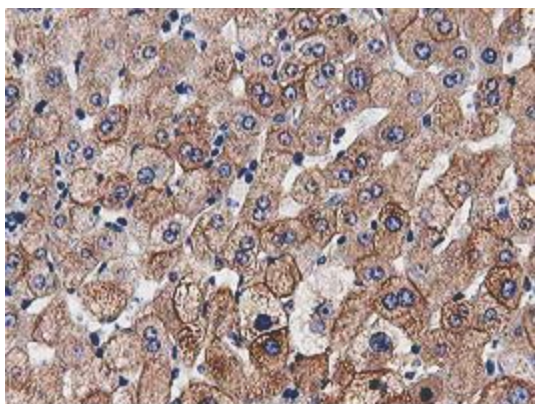
Immunohistochemical staining of paraffin-embedded Human prostate tissue within the normal limits using anti-HDAC6 mouse monoclonal antibody. (Heat-induced epitope retrieval by 10mM citric buffer, pH6.0, 100°C for 10min, [TA502177])



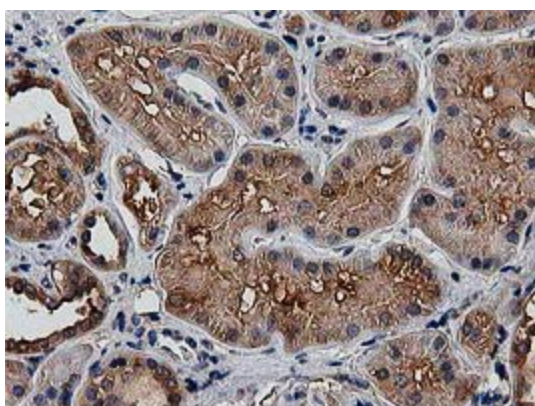
Immunohistochemical staining of paraffin-embedded Human thyroid tissue within the normal limits using anti-HDAC6 mouse monoclonal antibody. (Heat-induced epitope retrieval by 10mM citric buffer, pH6.0, 100°C for 10min, [TA502177])



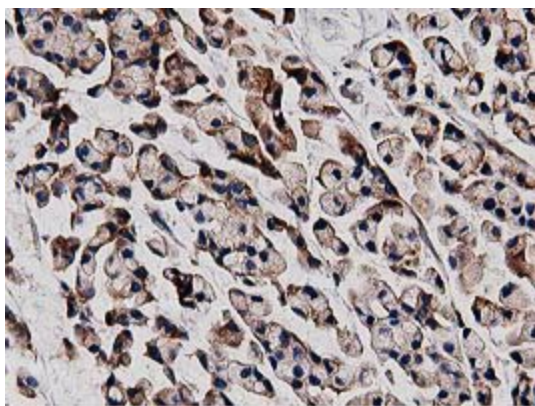
Immunohistochemical staining of paraffin-embedded Human lung tissue within the normal limits using anti-HDAC6 mouse monoclonal antibody. (Heat-induced epitope retrieval by 10mM citric buffer, pH6.0, 100°C for 10min, [TA502177])



Immunohistochemical staining of paraffin-embedded Human liver tissue within the normal limits using anti-HDAC6 mouse monoclonal antibody. (Heat-induced epitope retrieval by 10mM citric buffer, pH6.0, 100°C for 10min, [TA502177])



Immunohistochemical staining of paraffin-embedded Human Kidney tissue within the normal limits using anti-HDAC6 mouse monoclonal antibody. (Heat-induced epitope retrieval by 10mM citric buffer, pH6.0, 100°C for 10min, [TA502177])



Immunohistochemical staining of paraffin-embedded Adenocarcinoma of Human colon tissue using anti-HDAC6 mouse monoclonal antibody. (Heat-induced epitope retrieval by 10mM citric buffer, pH6.0, 100°C for 10min, [TA502177])