

## Product datasheet for **TA502173BM**

### CDCP1 Mouse Monoclonal Antibody (HRP conjugated) [Clone ID: OTI4G5]

#### Product data:

Product Type:	Primary Antibodies
Clone Name:	OTI4G5
Applications:	FC, IF, WB
Recommended Dilution:	WB 1:200~500, IF 1:100, FLOW 1:100
Reactivity:	Human
Host:	Mouse
Isotype:	IgG1
Clonality:	Monoclonal
Immunogen:	Full length human recombinant protein of human CDCP1 (NP_073753) produced in HEK293T cell.
Formulation:	PBS (pH 7.3) containing 1% BSA, 50% glycerol.
Concentration:	0.5 mg/ml
Purification:	Purified from mouse ascites fluids or tissue culture supernatant by affinity chromatography (protein A/G)
Conjugation:	HRP
Storage:	Store at -20°C as received.
Stability:	Stable for 12 months from date of receipt.
Predicted Protein Size:	92.8 kDa
Gene Name:	CUB domain containing protein 1
Database Link:	<a href="#">NP_073753</a> <a href="#">Entrez Gene 64866 Human</a> <a href="#">Q9H5V8</a>
Background:	The protein encoded by this gene is a transmembrane protein containing three extracellular CUB domains. This protein is found to be overexpressed in colon and lung cancers. Its expression level is correlated with the metastatic ability of carcinoma cells. This protein is located on the cell surface. It has been shown to be tyrosine phosphorylated in a cancer cell line. Alternatively spliced transcript variants encoding distinct isoforms have been reported. [provided by RefSeq]

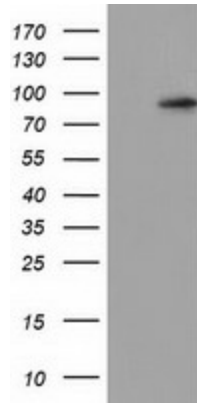


[View online »](#)

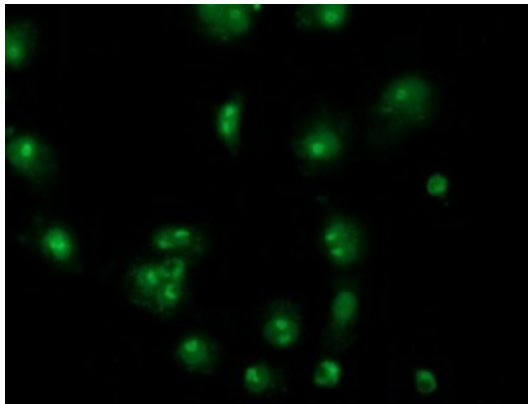
**Synonyms:** CD318; SIMA135; TRASK

**Protein Families:** ES Cell Differentiation/IPS, Transmembrane

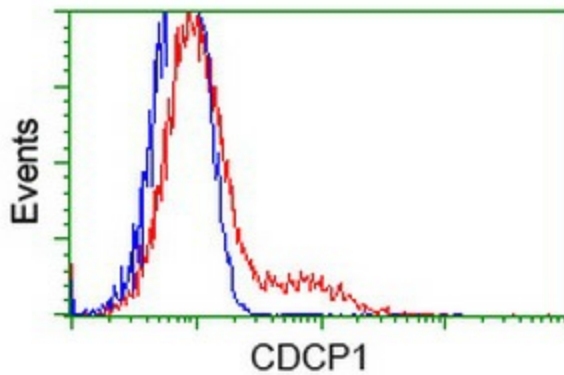
**Product images:**



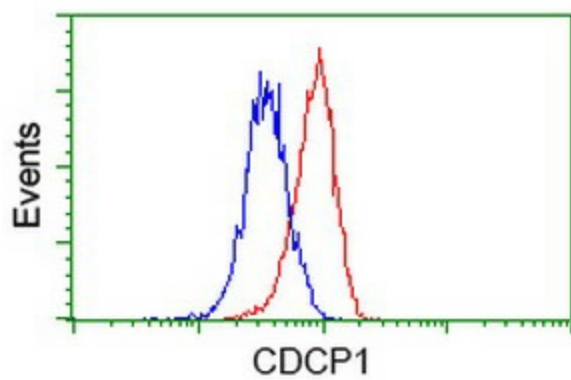
HEK293T cells were transfected with the pCMV6-ENTRY control (Left lane) or pCMV6-ENTRY CDCP1 ([RC220633], Right lane) cDNA for 48 hrs and lysed. Equivalent amounts of cell lysates (5 ug per lane) were separated by SDS-PAGE and immunoblotted with anti-CDCP1. Positive lysates [LY402953] (100ug) and [LC402953] (20ug) can be purchased separately from OriGene.



Anti-CDCP1 mouse monoclonal antibody ([TA502173]) immunofluorescent staining of COS7 cells transiently transfected by pCMV6-ENTRY CDCP1 ([RC220633]).



HEK293T cells transfected with either [RC220633] overexpress plasmid (Red) or empty vector control plasmid (Blue) were immunostained by anti-CDCP1 antibody ([TA502173]), and then analyzed by flow cytometry.



Flow cytometric Analysis of HeLa cells, using anti-CDCP1 antibody ([TA502173]), (Red), compared to a nonspecific negative control antibody (TA50011), (Blue).