

## Product datasheet for **TA502165BM**

### FKBPL Mouse Monoclonal Antibody (HRP conjugated) [Clone ID: OTI2D8]

#### Product data:

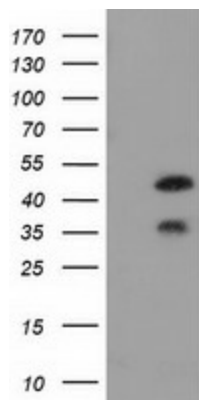
Product Type:	Primary Antibodies
Clone Name:	OTI2D8
Applications:	FC, IF, IHC, WB
Recommended Dilution:	WB 1:500, IHC 1:150, IF 1:100, FLOW 1:100
Reactivity:	Human
Host:	Mouse
Isotype:	IgG1
Clonality:	Monoclonal
Immunogen:	Full length human recombinant protein of human FKBPL (NP_071393) produced in HEK293T cell.
Formulation:	PBS (pH 7.3) containing 1% BSA, 50% glycerol.
Concentration:	0.5 mg/ml
Purification:	Purified from mouse ascites fluids or tissue culture supernatant by affinity chromatography (protein A/G)
Conjugation:	HRP
Storage:	Store at -20°C as received.
Stability:	Stable for 12 months from date of receipt.
Predicted Protein Size:	38 kDa
Gene Name:	FKBP prolyl isomerase like
Database Link:	<a href="#">NP_071393</a> <a href="#">Entrez Gene 63943 Human</a> <a href="#">Q9UIM3</a>
Background:	The protein encoded by this gene has similarity to the immunophilin protein family, which play a role in immunoregulation and basic cellular processes involving protein folding and trafficking. The encoded protein is thought to have a potential role in the induced radioresistance. Also it appears to have some involvement in the control of the cell cycle. [provided by RefSeq, Jul 2008]



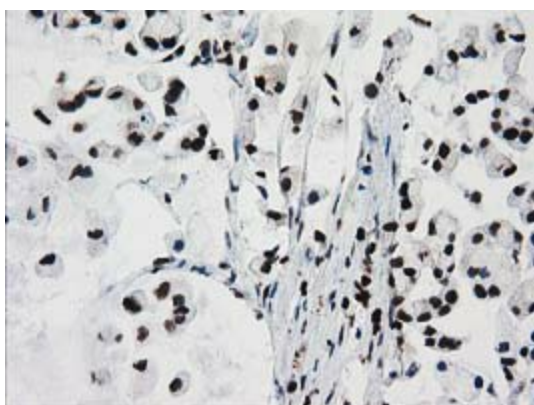
[View online »](#)

Synonyms: DIR1; NG7; WISP39

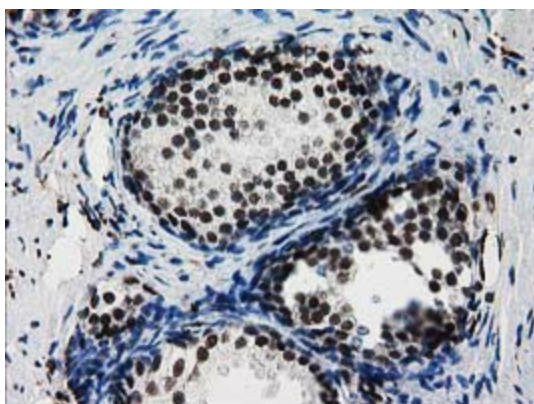
**Product images:**



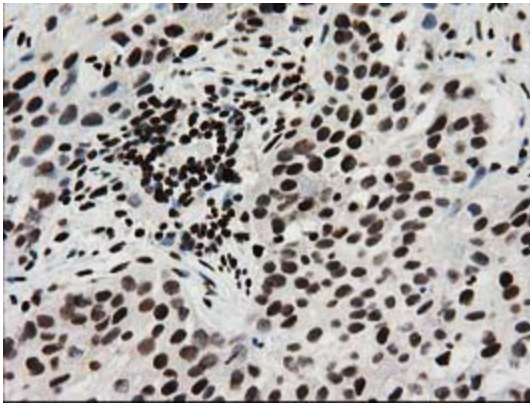
HEK293T cells were transfected with the pCMV6-ENTRY control (Cat# [PS100001], Left lane) or pCMV6-ENTRY FKBPL (Cat# [RC202153], Right lane) cDNA for 48 hrs and lysed. Equivalent amounts of cell lysates (5 ug per lane) were separated by SDS-PAGE and immunoblotted with anti-FKBPL (Cat# [TA502165]). Positive lysates [LY411782] (100ug) and [LC411782] (20ug) can be purchased separately from OriGene.



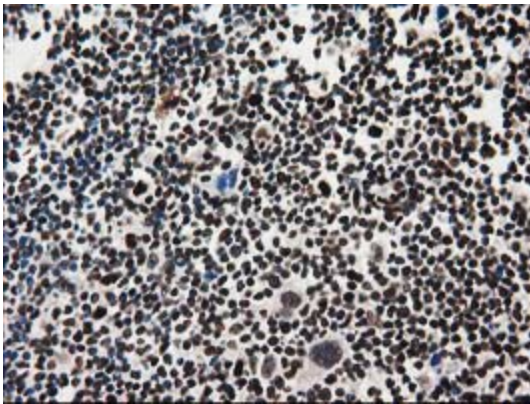
Immunohistochemical staining of paraffin-embedded Adenocarcinoma of Human colon tissue using anti-FKBPL mouse monoclonal antibody. (Heat-induced epitope retrieval by 10mM citric buffer, pH6.0, 100°C for 10min, [TA502165])



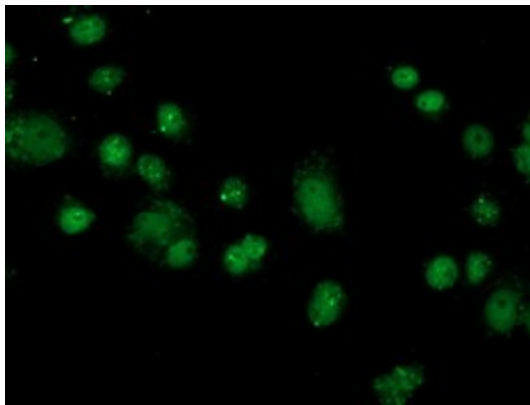
Immunohistochemical staining of paraffin-embedded Human prostate tissue within the normal limits using anti-FKBPL mouse monoclonal antibody. (Heat-induced epitope retrieval by 10mM citric buffer, pH6.0, 100°C for 10min, [TA502165])



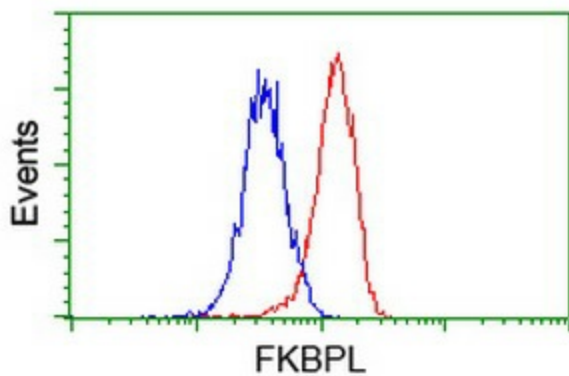
Immunohistochemical staining of paraffin-embedded Carcinoma of Human bladder tissue using anti-FKBPL mouse monoclonal antibody. (Heat-induced epitope retrieval by 10mM citric buffer, pH6.0, 100°C for 10min, [TA502165])



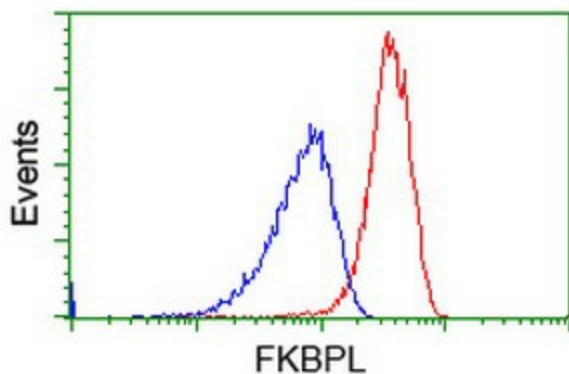
Immunohistochemical staining of paraffin-embedded Human lymphoma tissue using anti-FKBPL mouse monoclonal antibody. (Heat-induced epitope retrieval by 10mM citric buffer, pH6.0, 100°C for 10min, [TA502165])



Anti-FKBPL mouse monoclonal antibody ([TA502165]) immunofluorescent staining of COS7 cells transiently transfected by pCMV6-ENTRY FKBPL ([RC202153]).



Flow cytometric Analysis of HeLa cells, using anti-FKBPL antibody ([TA502165]), (Red), compared to a nonspecific negative control antibody, (Blue).



Flow cytometric Analysis of Jurkat cells, using anti-FKBPL antibody ([TA502165]), (Red), compared to a nonspecific negative control antibody, (Blue).