

Product datasheet for **TA502157BM**

SAMHD1 Mouse Monoclonal Antibody (HRP conjugated) [Clone ID: OTI1A1]

Product data:

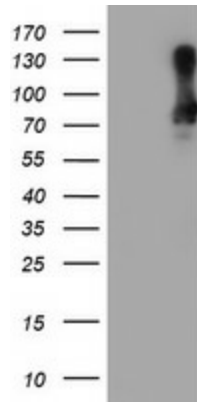
Product Type:	Primary Antibodies
Clone Name:	OTI1A1
Applications:	FC, IF, IHC, WB
Recommended Dilution:	WB 1:500~2000, IHC 1:150, IF 1:100, FLOW 1:100
Reactivity:	Human, Monkey, Mouse, Rat, Dog
Host:	Mouse
Isotype:	IgG2b
Clonality:	Monoclonal
Immunogen:	Full length human recombinant protein of human SAMHD1(NP_056289) produced in HEK293T cell.
Formulation:	PBS (pH 7.3) containing 1% BSA, 50% glycerol.
Concentration:	0.5 mg/ml
Purification:	Purified from mouse ascites fluids or tissue culture supernatant by affinity chromatography (protein A/G)
Conjugation:	HRP
Storage:	Store at -20°C as received.
Stability:	Stable for 12 months from date of receipt.
Predicted Protein Size:	72 kDa
Gene Name:	SAM and HD domain containing deoxynucleoside triphosphate triphosphohydrolase 1
Database Link:	NP_056289 Entrez Gene 56045 Mouse Entrez Gene 311580 Rat Entrez Gene 485862 Dog Entrez Gene 709060 Monkey Entrez Gene 25939 Human Q9Y3Z3
Background:	This gene may play a role in regulation of the innate immune response. The encoded protein is upregulated in response to viral infection and may be involved in mediation of tumor necrosis factor-alpha proinflammatory responses. Mutations in this gene have been associated with Aicardi-Goutieres syndrome. [provided by RefSeq]



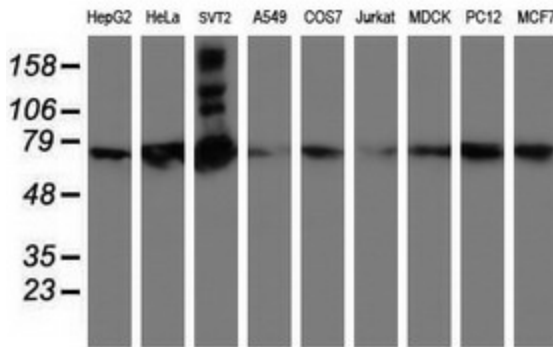
[View online »](#)

Synonyms: CHBL2; DCIP; HDDC1; MOP-5; SBBI88

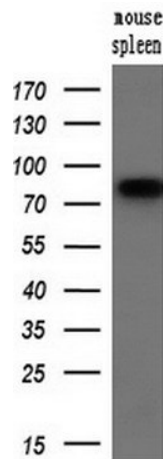
Product images:



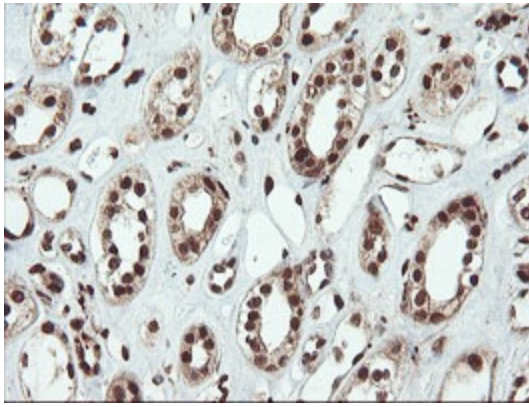
HEK293T cells were transfected with the pCMV6-ENTRY control (Left lane) or pCMV6-ENTRY SAMHD1 ([RC206013], Right lane) cDNA for 48 hrs and lysed. Equivalent amounts of cell lysates (5 ug per lane) were separated by SDS-PAGE and immunoblotted with anti-SAMHD1. Positive lysates [LY414526] (100ug) and [LC414526] (20ug) can be purchased separately from OriGene.



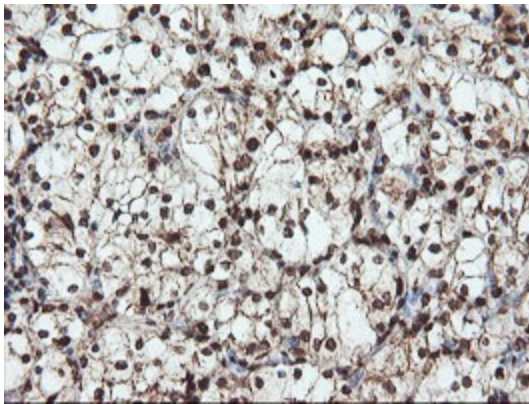
Western blot analysis of extracts (35ug) from 9 different cell lines by using anti-SAMHD1 monoclonal antibody (HepG2: human; HeLa: human; SVT2: mouse; A549: human; COS7: monkey; Jurkat: human; MDCK: canine; PC12: rat; MCF7: human).



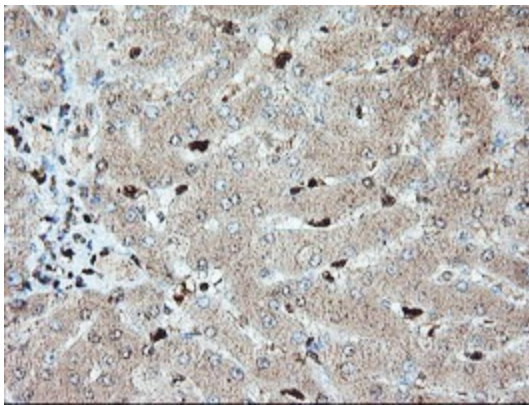
Western blot analysis of extracts (10ug) from a mouse tissue by using anti-SAMHD1 monoclonal antibody (1:200).



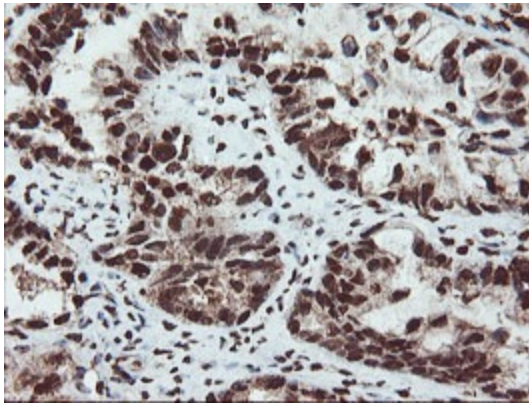
Immunohistochemical staining of paraffin-embedded Human Kidney tissue within the normal limits using anti-SAMHD1 mouse monoclonal antibody. (Heat-induced epitope retrieval by 10mM citric buffer, pH6.0, 100°C for 10min, [TA502157])



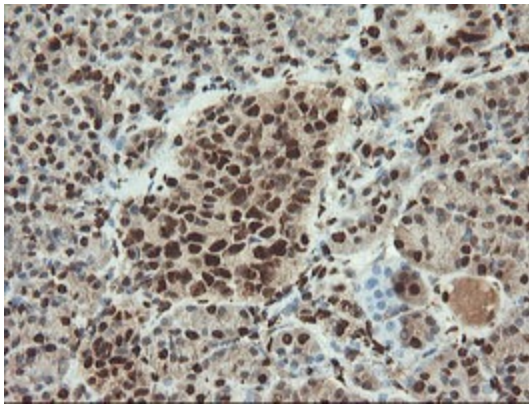
Immunohistochemical staining of paraffin-embedded Carcinoma of Human kidney tissue using anti-SAMHD1 mouse monoclonal antibody. (Heat-induced epitope retrieval by 10mM citric buffer, pH6.0, 100°C for 10min, [TA502157])



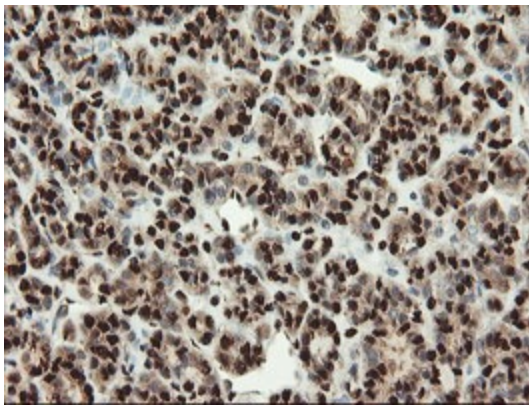
Immunohistochemical staining of paraffin-embedded Human liver tissue within the normal limits using anti-SAMHD1 mouse monoclonal antibody. (Heat-induced epitope retrieval by 10mM citric buffer, pH6.0, 100°C for 10min, [TA502157])



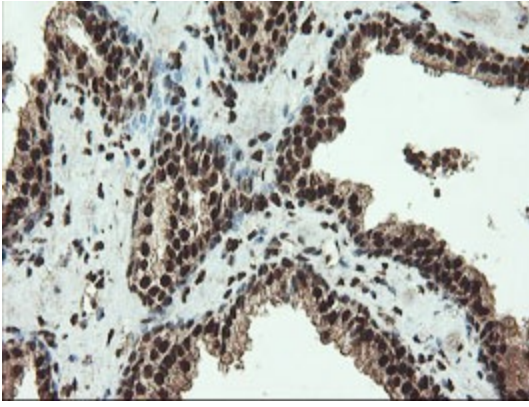
Immunohistochemical staining of paraffin-embedded Adenocarcinoma of Human ovary tissue using anti-SAMHD1 mouse monoclonal antibody. (Heat-induced epitope retrieval by 10mM citric buffer, pH6.0, 100°C for 10min, [TA502157])



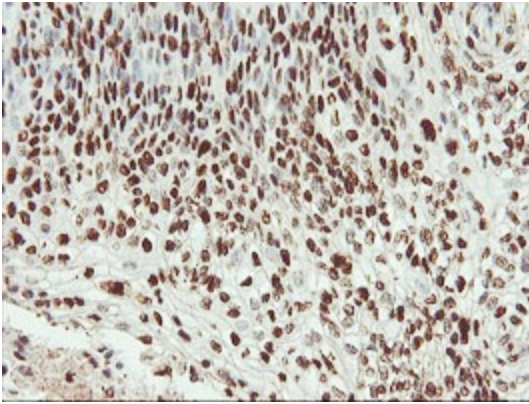
Immunohistochemical staining of paraffin-embedded Human pancreas tissue within the normal limits using anti-SAMHD1 mouse monoclonal antibody. (Heat-induced epitope retrieval by 10mM citric buffer, pH6.0, 100°C for 10min, [TA502157])



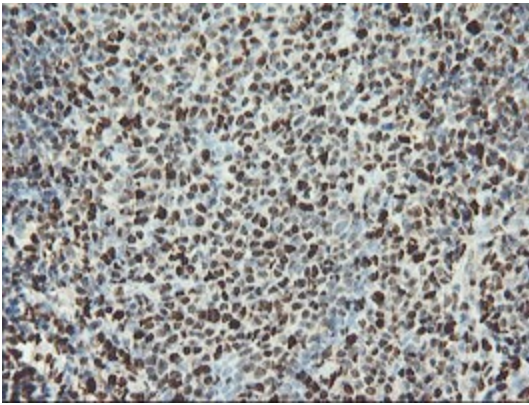
Immunohistochemical staining of paraffin-embedded Carcinoma of Human thyroid tissue using anti-SAMHD1 mouse monoclonal antibody. (Heat-induced epitope retrieval by 10mM citric buffer, pH6.0, 100°C for 10min, [TA502157])



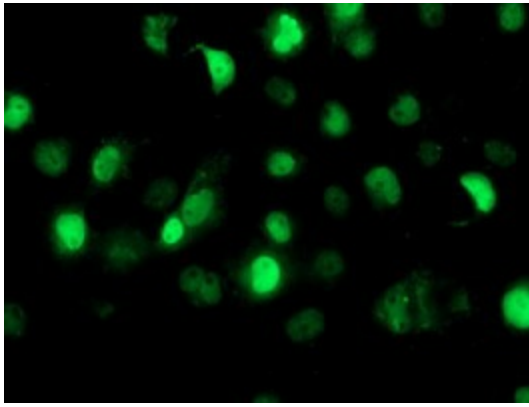
Immunohistochemical staining of paraffin-embedded Carcinoma of Human prostate tissue using anti-SAMHD1 mouse monoclonal antibody. (Heat-induced epitope retrieval by 10mM citric buffer, pH6.0, 100°C for 10min, [TA502157])



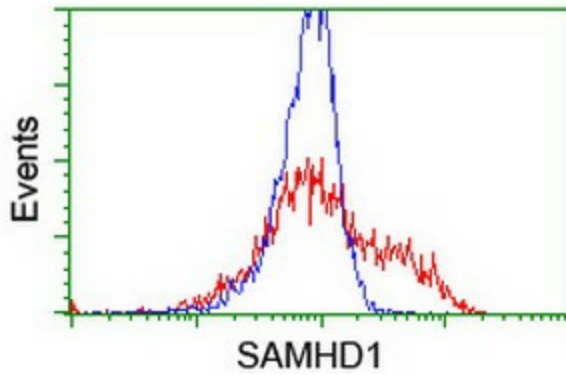
Immunohistochemical staining of paraffin-embedded Carcinoma of Human bladder tissue using anti-SAMHD1 mouse monoclonal antibody. (Heat-induced epitope retrieval by 10mM citric buffer, pH6.0, 100°C for 10min, [TA502157])



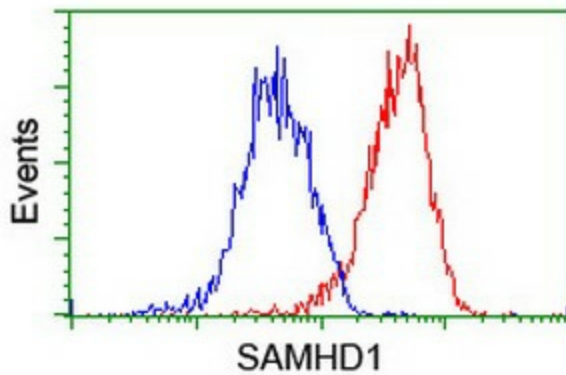
Immunohistochemical staining of paraffin-embedded Human tonsil within the normal limits using anti-SAMHD1 mouse monoclonal antibody. (Heat-induced epitope retrieval by 10mM citric buffer, pH6.0, 100°C for 10min, [TA502157])



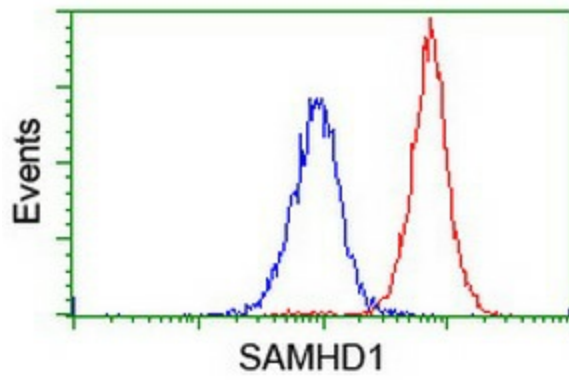
Anti-SAMHD1 mouse monoclonal antibody ([TA502157]) immunofluorescent staining of COS7 cells transiently transfected by pCMV6-ENTRY SAMHD1 ([RC206013]).



HEK293T cells transfected with either [RC206013] overexpress plasmid (Red) or empty vector control plasmid (Blue) were immunostained by anti-SAMHD1 antibody ([TA502157]), and then analyzed by flow cytometry.



Flow cytometric Analysis of HeLa cells, using anti-SAMHD1 antibody ([TA502157]), (Red), compared to a nonspecific negative control antibody, (Blue).



Flow cytometric Analysis of Jurkat cells, using anti-SAMHD1 antibody ([TA502157]), (Red), compared to a nonspecific negative control antibody, (Blue).