

Product datasheet for TA502152

GCKR Mouse Monoclonal Antibody [Clone ID: OT1E7]

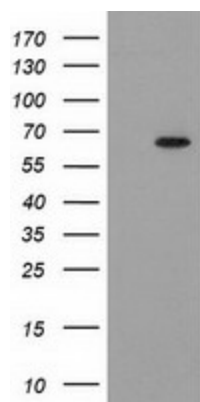
Product data:

Product Type:	Primary Antibodies
Clone Name:	OT1E7
Applications:	IF, IHC, WB
Recommended Dilution:	WB 1:2000, IHC 1:150, IF 1:100
Reactivity:	Human, Mouse, Rat
Host:	Mouse
Isotype:	IgG1
Clonality:	Monoclonal
Immunogen:	Full length human recombinant protein of human GCKR (NP_001417) produced in HEK293T cell.
Formulation:	PBS (pH 7.3) containing 1% BSA, 50% glycerol and 0.02% sodium azide.
Concentration:	1 mg/ml
Purification:	Purified from mouse ascites fluids or tissue culture supernatant by affinity chromatography (protein A/G)
Conjugation:	Unconjugated
Storage:	Store at -20°C as received.
Stability:	Stable for 12 months from date of receipt.
Predicted Protein Size:	68.5 kDa
Gene Name:	glucokinase regulator
Database Link:	NP_001477 Entrez Gene 25658 Rat Entrez Gene 231103 Mouse Entrez Gene 2646 Human Q14397
Background:	This gene encodes a protein belonging to the GCKR subfamily of the SIS (Sugar ISomerase) family of proteins. The gene product is a regulatory protein that inhibits glucokinase in liver and pancreatic islet cells by binding non-covalently to form an inactive complex with the enzyme. This gene is considered a susceptibility gene candidate for a form of maturity-onset diabetes of the young (MODY). [provided by RefSeq]

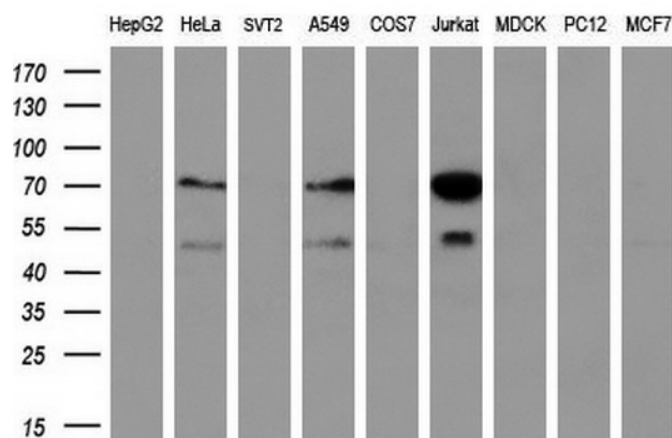

[View online »](#)

Synonyms: FGQTL5; GGRP

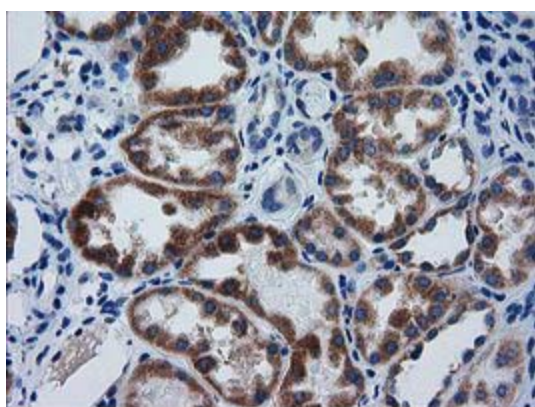
Product images:



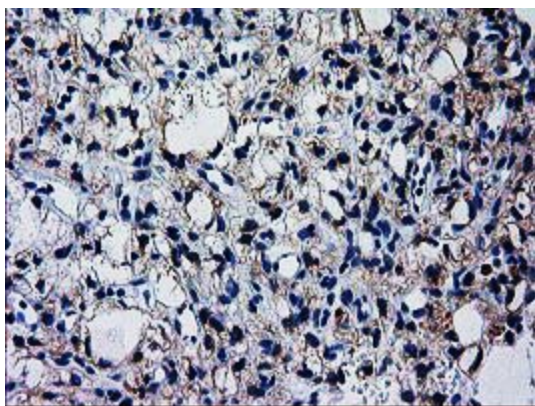
HEK293T cells were transfected with the pCMV6-ENTRY control (Cat# [PS100001], Left lane) or pCMV6-ENTRY GCKR (Cat# [RC214230], Right lane) cDNA for 48 hrs and lysed. Equivalent amounts of cell lysates (5 ug per lane) were separated by SDS-PAGE and immunoblotted with anti-GCKR antibody (Cat# TA502152). Positive lysates [LY400576] (100ug) and [LC400576] (20ug) can be purchased separately from OriGene.



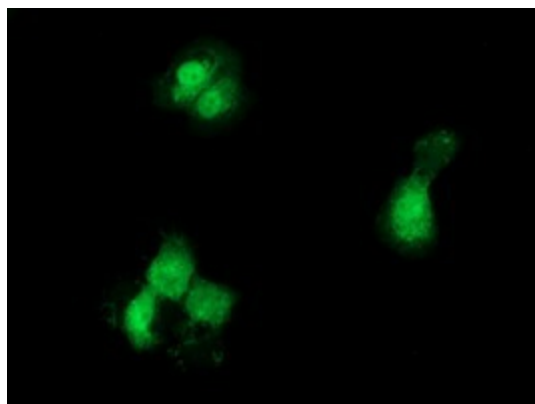
Western blot analysis of extracts (35ug) from 9 different cell lines by using anti-GCKR monoclonal antibody (HepG2: human; HeLa: human; SVT2: mouse; A549: human; COS7: monkey; Jurkat: human; MDCK: canine; PC12: rat; MCF7: human) (1:200).



Immunohistochemical staining of paraffin-embedded Human Kidney tissue within the normal limits using anti-GCKR mouse monoclonal antibody. (Heat-induced epitope retrieval by 10mM citric buffer, pH6.0, 100°C for 10min, TA502152)



Immunohistochemical staining of paraffin-embedded Carcinoma of Human kidney tissue using anti-GCKR mouse monoclonal antibody. (Heat-induced epitope retrieval by 10mM citric buffer, pH6.0, 100°C for 10min, TA502152)



Anti-GCKR mouse monoclonal antibody (TA502152) immunofluorescent staining of COS7 cells transiently transfected by pCMV6-ENTRY GCKR ([RC214230]).