

## Product datasheet for **TA502151M**

### **EXDL1 (EXD1) Mouse Monoclonal Antibody [Clone ID: OTI1A2]**

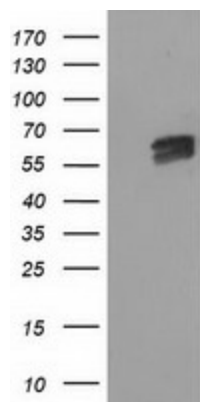
#### **Product data:**

|                         |   |
|-------------------------|---|
| Product Type:           | Primary Antibodies  |
| Clone Name:             | OTI1A2  |
| Applications:           | FC, IF, WB  |
| Recommended Dilution:   | WB 1:500, IF 1:100, FLOW 1:100  |
| Reactivity:             | Human   |
| Host:                   | Mouse   |
| Isotype:                | IgG1  |
| Clonality:              | Monoclonal  |
| Immunogen:              | Full length human recombinant protein of human EXD1 (NP_689809) produced in HEK293T cell.                 |
| Formulation:            | PBS (pH 7.3) containing 1% BSA, 50% glycerol and 0.02% sodium azide.                                      |
| Concentration:          | 0.77 mg/ml  |
| Purification:           | Purified from mouse ascites fluids or tissue culture supernatant by affinity chromatography (protein A/G) |
| Conjugation:            | Unconjugated  |
| Storage:                | Store at -20°C as received.   |
| Stability:              | Stable for 12 months from date of receipt.  |
| Predicted Protein Size: | 58.2 kDa  |
| Gene Name:              | exonuclease 3'-5' domain containing 1   |
| Database Link:          | <a href="#">NP_689809</a><br><a href="#">Entrez Gene 161829 Human</a><br><a href="#">Q8NHP7</a>           |
| Synonyms:               | EXDL1   |

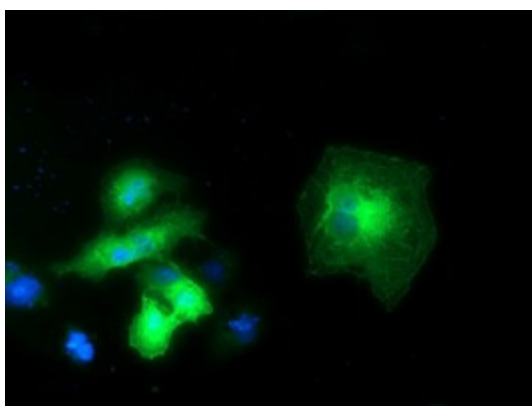


[View online »](#)

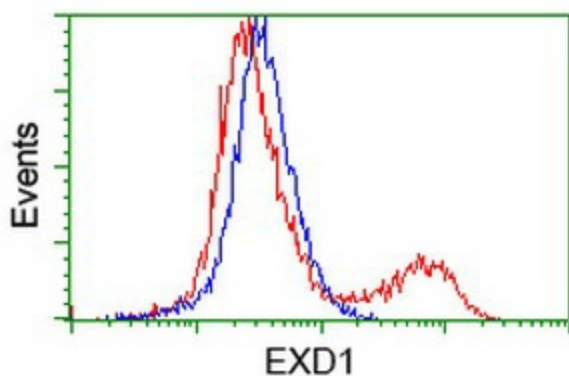
## Product images:



HEK293T cells were transfected with the pCMV6-ENTRY control (Cat# [PS100001], Left lane) or pCMV6-ENTRY EXD1 (Cat# [RC206223], Right lane) cDNA for 48 hrs and lysed. Equivalent amounts of cell lysates (5 ug per lane) were separated by SDS-PAGE and immunoblotted with anti-EXD1 (Cat# [TA502151]). Positive lysates [LY407402] (100ug) and [LC407402] (20ug) can be purchased separately from OriGene.



Anti-EXD1 mouse monoclonal antibody ([TA502151]) immunofluorescent staining of COS7 cells transiently transfected by pCMV6-ENTRY EXD1 ([RC206223]).



HEK293T cells transfected with either [RC206223] overexpress plasmid (Red) or empty vector control plasmid (Blue) were immunostained by anti-EXD1 antibody ([TA502151]), and then analyzed by flow cytometry.