

Product datasheet for **TA502144**

PYCR2 Mouse Monoclonal Antibody [Clone ID: OTI5C7]

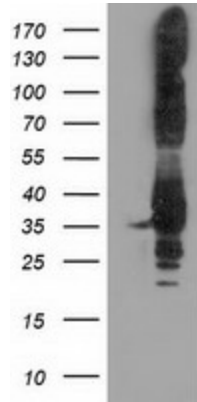
Product data:

Product Type:	Primary Antibodies
Clone Name:	OTI5C7
Applications:	IF, IHC, WB
Recommended Dilution:	WB 1:500~2000, IHC 1:150, IF 1:100
Reactivity:	Human, Mouse, Rat
Host:	Mouse
Isotype:	IgG2a
Clonality:	Monoclonal
Immunogen:	Full length human recombinant protein of human PYCR2 (NP_037460) produced in HEK293T cell.
Formulation:	PBS (pH 7.3) containing 1% BSA, 50% glycerol and 0.02% sodium azide.
Concentration:	0.6 mg/ml
Purification:	Purified from mouse ascites fluids or tissue culture supernatant by affinity chromatography (protein A/G)
Conjugation:	Unconjugated
Storage:	Store at -20°C as received.
Stability:	Stable for 12 months from date of receipt.
Predicted Protein Size:	33.5 kDa
Gene Name:	pyrroline-5-carboxylate reductase 2
Database Link:	NP_037460 Entrez Gene 69051 Mouse Entrez Gene 364064 Rat Entrez Gene 29920 Human Q96C36
Synonyms:	HLD10; P5CR2
Protein Pathways:	Arginine and proline metabolism, Metabolic pathways

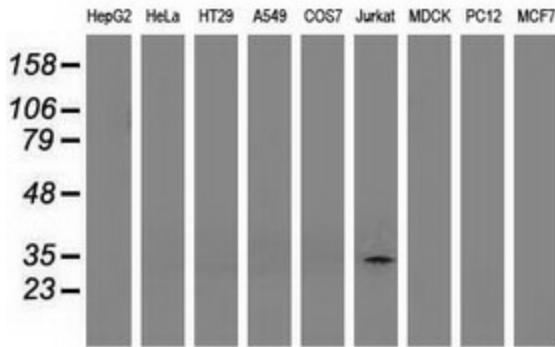


[View online »](#)

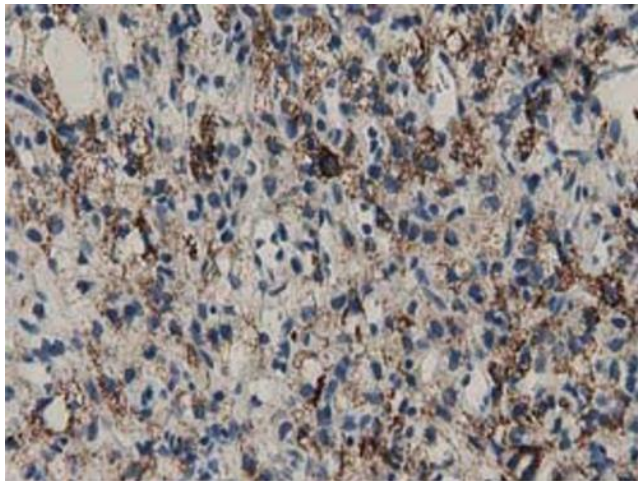
Product images:



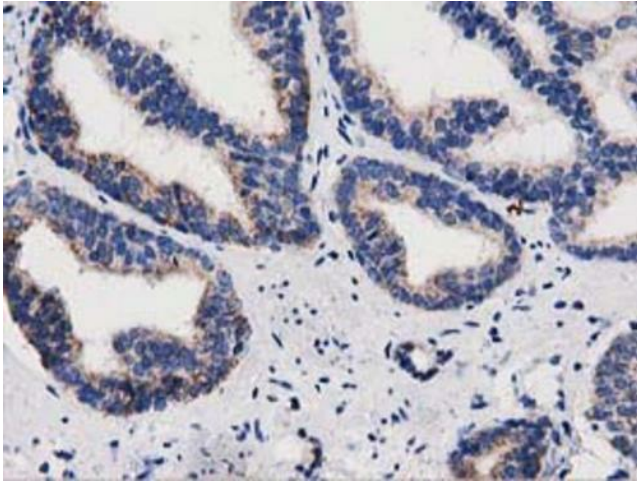
HEK293T cells were transfected with the pCMV6-ENTRY control (Left lane) or pCMV6-ENTRY PYCR2 ([RC204525], Right lane) cDNA for 48 hrs and lysed. Equivalent amounts of cell lysates (5 ug per lane) were separated by SDS-PAGE and immunoblotted with anti-PYCR2. Positive lysates [LY402246] (100ug) and [LC402246] (20ug) can be purchased separately from OriGene.



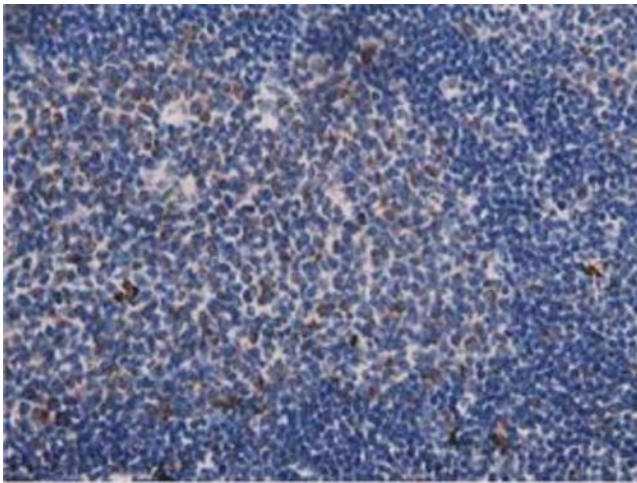
Western blot analysis of extracts (35ug) from 9 different cell lines by using anti-PYCR2 monoclonal antibody.



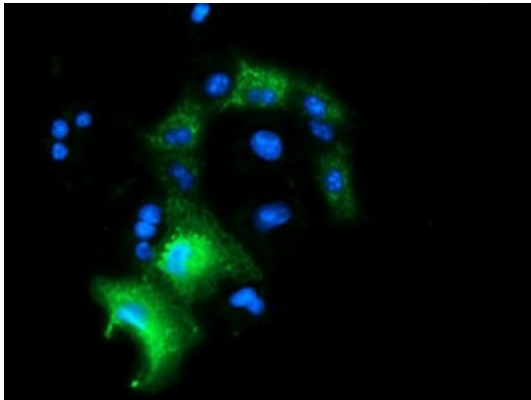
Immunohistochemical staining of paraffin-embedded Carcinoma of Human kidney tissue using anti-PYCR2 mouse monoclonal antibody. Heat-induced epitope retrieval by EDTA solution buffer pH 8.0 at 120°C for 3 min.



Immunohistochemical staining of paraffin-embedded Carcinoma of Human prostate tissue using anti-PYCR2 mouse monoclonal antibody. Heat-induced epitope retrieval by EDTA solution buffer pH 8.0 at 120°C for 3 min.



Immunohistochemical staining of paraffin-embedded Human lymph node tissue within the normal limits using anti-PYCR2 mouse monoclonal antibody. Heat-induced epitope retrieval by EDTA solution buffer pH 8.0 at 120°C for 3 min.



Anti-PYCR2 mouse monoclonal antibody (TA502144) immunofluorescent staining of COS7 cells transiently transfected by pCMV6-ENTRY PYCR2 ([RC204525]).