

Product datasheet for **TA502143AM**

HDAC1 Mouse Monoclonal Antibody (Biotin conjugated) [Clone ID: OTI6F11]

Product data:

Product Type:	Primary Antibodies
Clone Name:	OTI6F11
Applications:	FC, IF, WB
Recommended Dilution:	WB 1:500, IF 1:100, FLOW 1:100
Reactivity:	Human, Mouse, Rat
Host:	Mouse
Isotype:	IgG1
Clonality:	Monoclonal
Immunogen:	Full length human recombinant protein of human HDAC1 (NP_004955) produced in HEK293T cell.
Formulation:	PBS (pH 7.3) containing 1% BSA, 50% glycerol and 0.02% sodium azide.
Concentration:	0.5 mg/ml
Purification:	Purified from mouse ascites fluids or tissue culture supernatant by affinity chromatography (protein A/G)
Conjugation:	Biotin
Storage:	Store at -20°C as received.
Stability:	Stable for 12 months from date of receipt.
Predicted Protein Size:	54.9 kDa
Gene Name:	histone deacetylase 1
Database Link:	NP_004955 Entrez Gene 297893 Rat Entrez Gene 433759 Mouse Entrez Gene 3065 Human Q13547



[View online »](#)

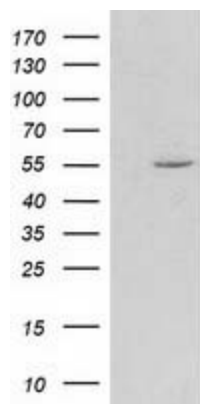
Background: Histone acetylation and deacetylation, catalyzed by multisubunit complexes, play a key role in the regulation of eukaryotic gene expression. The protein encoded by this gene belongs to the histone deacetylase/acuc/apha family and is a component of the histone deacetylase complex. It also interacts with retinoblastoma tumor-suppressor protein and this complex is a key element in the control of cell proliferation and differentiation. Together with metastasis-associated protein-2, it deacetylates p53 and modulates its effect on cell growth and apoptosis. [provided by RefSeq]

Synonyms: GON-10; HD1; RPD3; RPD3L1

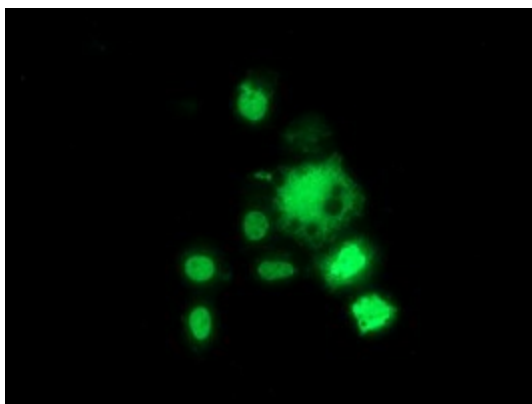
Protein Families: Adult stem cells, Druggable Genome, Stem cell - Pluripotency, Stem cell relevant signaling - DSL/Notch pathway, Transcription Factors

Protein Pathways: Cell cycle, Chronic myeloid leukemia, Huntington's disease, Notch signaling pathway, Pathways in cancer

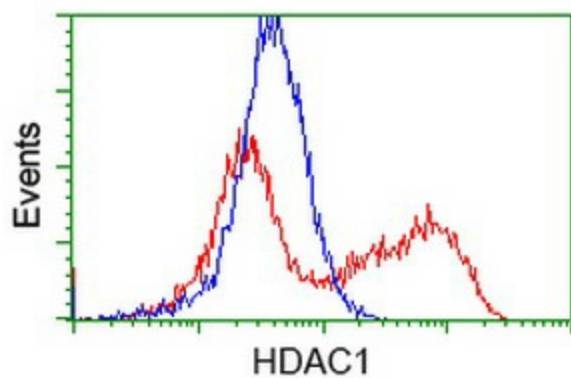
Product images:



HEK293T cells were transfected with the pCMV6-ENTRY control (Left lane) or pCMV6-ENTRY HDAC1 ([RC201745], Right lane) cDNA for 48 hrs and lysed. Equivalent amounts of cell lysates (5 ug per lane) were separated by SDS-PAGE and immunoblotted with anti-HDAC1. Positive lysates [LY417624] (100ug) and [LC417624] (20ug) can be purchased separately from OriGene.



Anti-HDAC1 mouse monoclonal antibody ([TA502143]) immunofluorescent staining of COS7 cells transiently transfected by pCMV6-ENTRY HDAC1 ([RC201745]).



HEK293T cells transfected with either [RC201745] overexpress plasmid (Red) or empty vector control plasmid (Blue) were immunostained by anti-HDAC1 antibody ([TA502143]), and then analyzed by flow cytometry.