

Product datasheet for **TA502137BM**

LMAN1 Mouse Monoclonal Antibody (HRP conjugated) [Clone ID: OTI1A8]

Product data:

Product Type:	Primary Antibodies
Clone Name:	OTI1A8
Applications:	FC, IF, IHC, WB
Recommended Dilution:	WB 1:200~500, IHC 1:150, IF 1:100, FLOW 1:100
Reactivity:	Human, Dog, Rat, Monkey, Mouse
Host:	Mouse
Isotype:	IgG1
Clonality:	Monoclonal
Immunogen:	Full length human recombinant protein of human LMAN1 (NP_005561) produced in HEK293T cell.
Formulation:	PBS (pH 7.3) containing 1% BSA, 50% glycerol.
Concentration:	0.5 mg/ml
Purification:	Purified from mouse ascites fluids or tissue culture supernatant by affinity chromatography (protein A/G)
Conjugation:	HRP
Storage:	Store at -20°C as received.
Stability:	Stable for 12 months from date of receipt.
Predicted Protein Size:	54.2 kDa
Gene Name:	lectin, mannose binding 1
Database Link:	NP_005561 Entrez Gene 70361 Mouse Entrez Gene 116666 Rat Entrez Gene 476186 Dog Entrez Gene 697449 Monkey Entrez Gene 3998 Human P49257



[View online »](#)

Background:

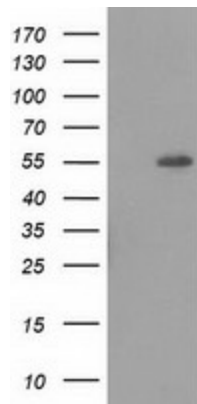
The protein encoded by this gene is a type I integral membrane protein localized in the intermediate region between the endoplasmic reticulum and the Golgi, presumably recycling between the two compartments. The protein is a mannose-specific lectin and is a member of a novel family of plant lectin homologs in the secretory pathway of animal cells. Mutations in the gene are associated with a coagulation defect. Using positional cloning, the gene was identified as the disease gene leading to combined factor V-factor VIII deficiency, a rare, autosomal recessive disorder in which both coagulation factors V and VIII are diminished. [provided by RefSeq]

Synonyms:

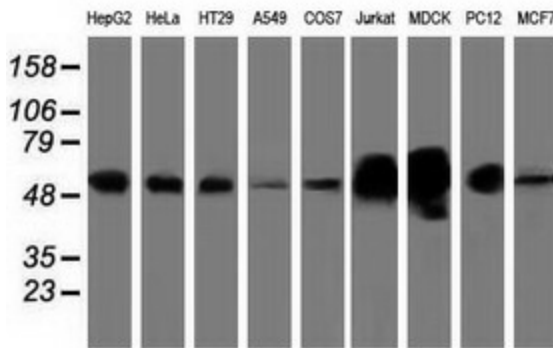
ERGIC-53; ERGIC53; F5F8D; FMFD1; gp58; MCFD1; MR60

Protein Families:

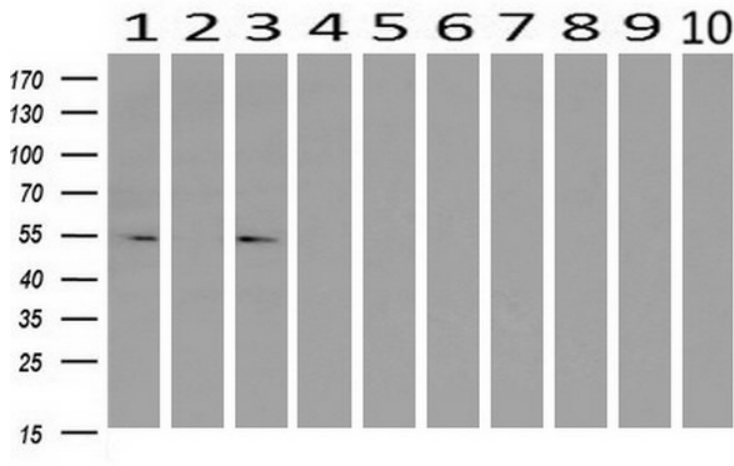
Druggable Genome, Transmembrane

Product images:


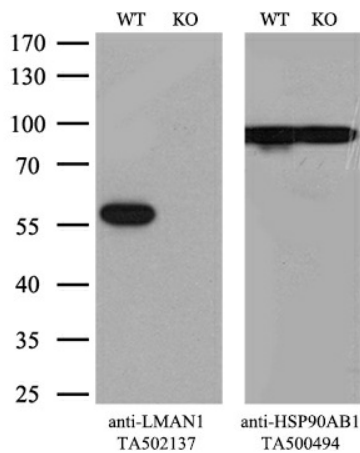
HEK293T cells were transfected with the pCMV6-ENTRY control (Cat# [PS100001], Left lane) or pCMV6-ENTRY LMAN1 (Cat# [RC207088], Right lane) cDNA for 48 hrs and lysed. Equivalent amounts of cell lysates (5 ug per lane) were separated by SDS-PAGE and immunoblotted with anti-LMAN1 (Cat# [TA502137]). Positive lysates [LY401709] (100ug) and [LC401709] (20ug) can be purchased separately from OriGene.



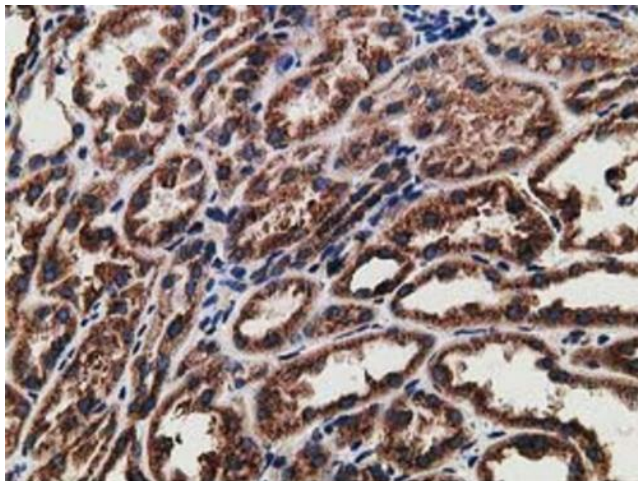
Western blot analysis of extracts (35ug) from 9 different cell lines by using anti-LMAN1 monoclonal antibody.



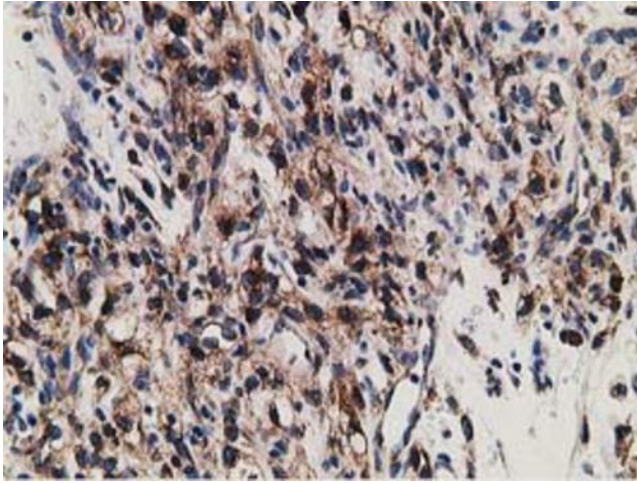
Western blot analysis of extracts (10ug) from 10 Human tissue by using anti-LMAN1 monoclonal antibody at 1:200 (1: Testis; 2: Omentum; 3: Uterus; 4: Breast; 5: Brain; 6: Liver; 7: Ovary; 8: Thyroid gland; 9: colon;10: spleen).



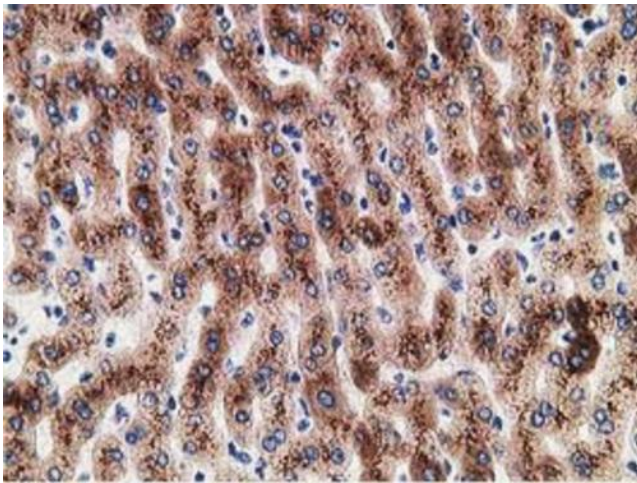
Equivalent amounts of cell lysates (10 ug per lane) of wild-type 293T cells (WT, Cat# LC810293T) and LMAN1-Knockout 293T cells (KO, Cat# [LC812175]) were separated by SDS-PAGE and immunoblotted with anti-LMAN1 monoclonal antibody [TA502137], (1:1000). Then the blotted membrane was stripped and reprobed with anti-HSP90AB1 antibody ([TA500494]) as a loading control.



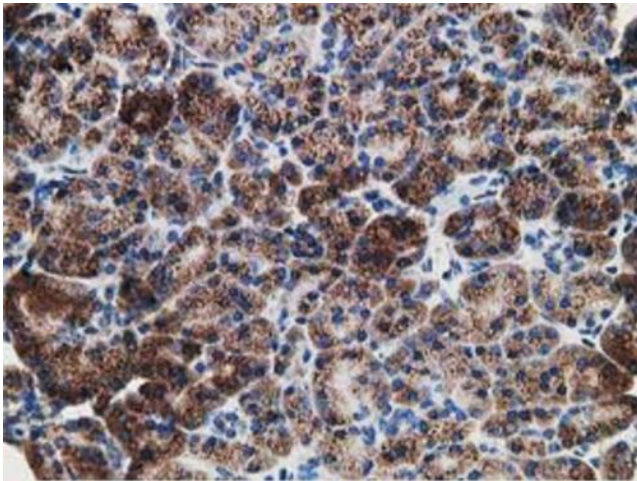
Immunohistochemical staining of paraffin-embedded Human Kidney tissue within the normal limits using anti-LMAN1 mouse monoclonal antibody. (Heat-induced epitope retrieval by 10mM citric buffer, pH6.0, 100°C for 10min, [TA502137])



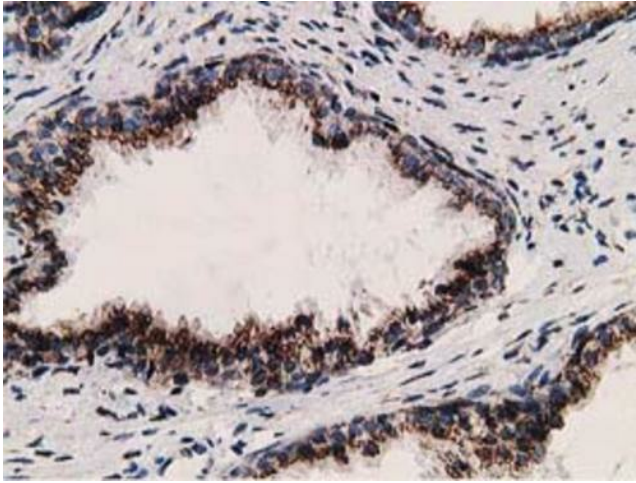
Immunohistochemical staining of paraffin-embedded Carcinoma of Human kidney tissue using anti-LMAN1 mouse monoclonal antibody. (Heat-induced epitope retrieval by 10mM citric buffer, pH6.0, 100°C for 10min, [TA502137])



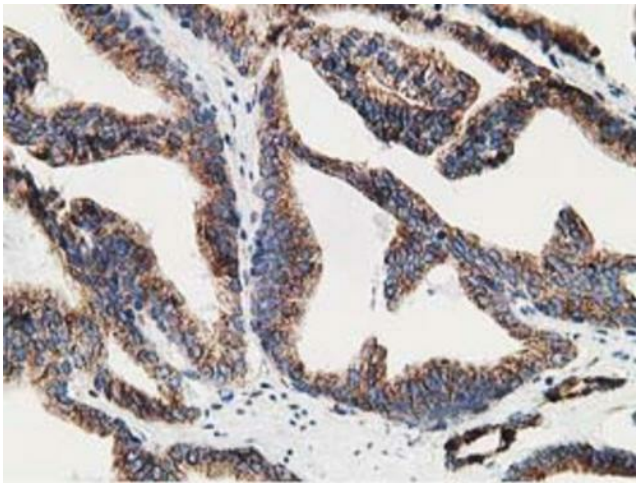
Immunohistochemical staining of paraffin-embedded Human liver tissue within the normal limits using anti-LMAN1 mouse monoclonal antibody. (Heat-induced epitope retrieval by 10mM citric buffer, pH6.0, 100°C for 10min, [TA502137])



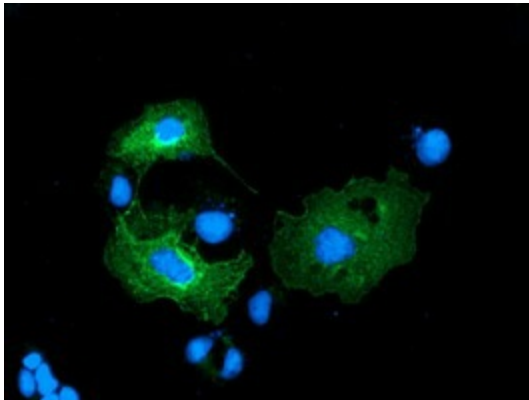
Immunohistochemical staining of paraffin-embedded Human pancreas tissue within the normal limits using anti-LMAN1 mouse monoclonal antibody. (Heat-induced epitope retrieval by 10mM citric buffer, pH6.0, 100°C for 10min, [TA502137])



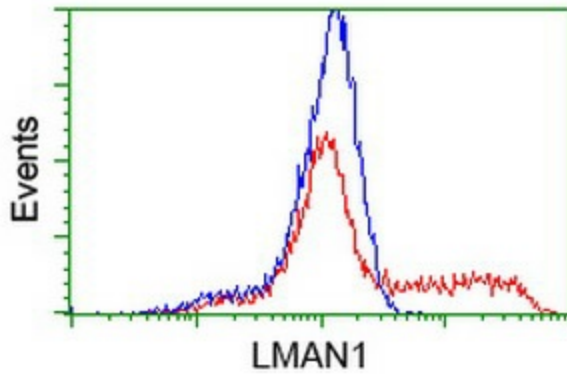
Immunohistochemical staining of paraffin-embedded Human prostate tissue within the normal limits using anti-LMAN1 mouse monoclonal antibody. (Heat-induced epitope retrieval by 10mM citric buffer, pH6.0, 100°C for 10min, [TA502137])



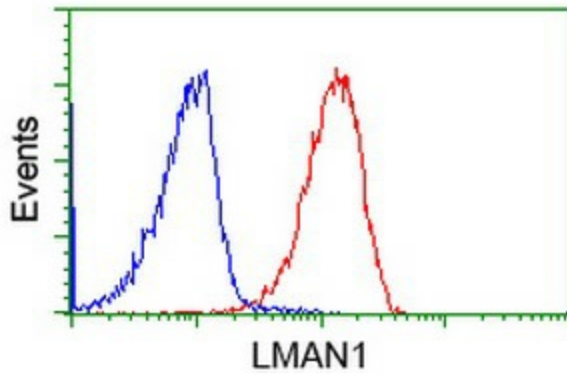
Immunohistochemical staining of paraffin-embedded Carcinoma of Human prostate tissue using anti-LMAN1 mouse monoclonal antibody. (Heat-induced epitope retrieval by 10mM citric buffer, pH6.0, 100°C for 10min, [TA502137])



Anti-LMAN1 mouse monoclonal antibody ([TA502137]) immunofluorescent staining of COS7 cells transiently transfected by pCMV6-ENTRY LMAN1 ([RC207088]).



HEK293T cells transfected with either [RC207088] overexpress plasmid (Red) or empty vector control plasmid (Blue) were immunostained by anti-LMAN1 antibody ([TA502137]), and then analyzed by flow cytometry.



Flow cytometric Analysis of Jurkat cells, using anti-LMAN1 antibody ([TA502137]), (Red), compared to a nonspecific negative control antibody (TA50011), (Blue).