

## Product datasheet for **TA502132S**

### SQSTM1 Mouse Monoclonal Antibody [Clone ID: OTI4G9]

#### Product data:

Product Type:	Primary Antibodies
Clone Name:	OTI4G9
Applications:	FC, IHC, WB
Recommended Dilution:	WB 1:500~2000, IHC 1:150, FLOW 1:100
Reactivity:	Human, Monkey, Mouse, Rat
Host:	Mouse
Isotype:	IgG1
Clonality:	Monoclonal
Immunogen:	Full length human recombinant protein of human SQSTM1 (NP_003891) produced in HEK293T cell.
Formulation:	PBS (pH 7.3) containing 1% BSA, 50% glycerol and 0.02% sodium azide.
Concentration:	0.9 mg/ml
Purification:	Purified from mouse ascites fluids or tissue culture supernatant by affinity chromatography (protein A/G)
Conjugation:	Unconjugated
Storage:	Store at -20°C as received.
Stability:	Stable for 12 months from date of receipt.
Predicted Protein Size:	47.5 kDa
Gene Name:	sequestosome 1
Database Link:	<a href="#">NP_003891</a> <a href="#">Entrez Gene 18412 Mouse</a> <a href="#">Entrez Gene 113894 Rat</a> <a href="#">Entrez Gene 705481 Monkey</a> <a href="#">Entrez Gene 8878 Human</a> <a href="#">Q13501</a>



[View online »](#)

**Background:**

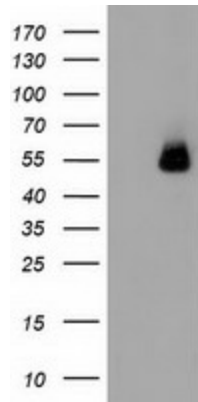
This gene encodes a multifunctional protein that binds ubiquitin and regulates activation of the nuclear factor kappa-B (NF- $\kappa$ B) signaling pathway. The protein functions as a scaffolding/adaptor protein in concert with TNF receptor-associated factor 6 to mediate activation of NF- $\kappa$ B in response to upstream signals. Alternatively spliced transcript variants encoding either the same or different isoforms have been identified for this gene. Mutations in this gene result in sporadic and familial Paget disease of bone. [provided by RefSeq]

**Synonyms:**

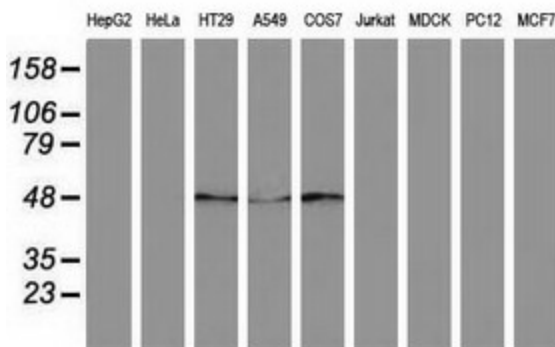
A170; OSIL; p60; p62; p62B; PDB3; ZIP3

**Protein Families:**

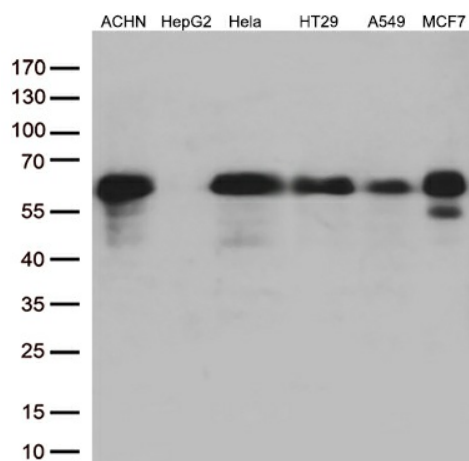
Druggable Genome, Transcription Factors

**Product images:**


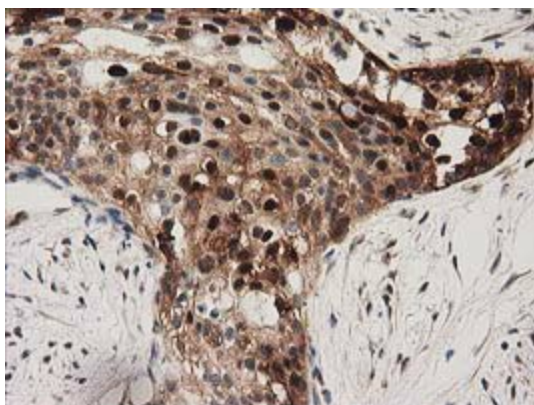
HEK293T cells were transfected with the pCMV6-ENTRY control (Left lane) or pCMV6-ENTRY SQSTM1 ([RC203214], Right lane) cDNA for 48 hrs and lysed. Equivalent amounts of cell lysates (5 ug per lane) were separated by SDS-PAGE and immunoblotted with anti-SQSTM1. Positive lysates [LY401285] (100ug) and [LC401285] (20ug) can be purchased separately from OriGene.



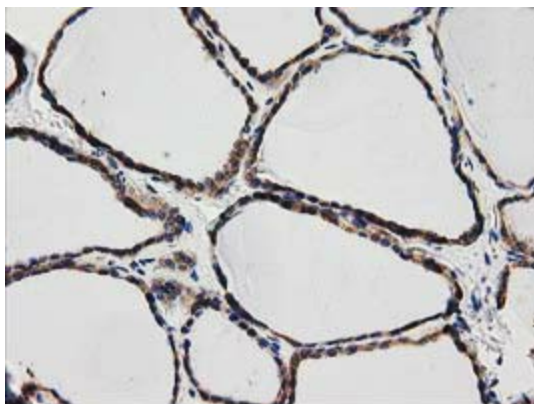
Western blot analysis of extracts (35ug) from 9 different cell lines by using anti-SQSTM1 monoclonal antibody.



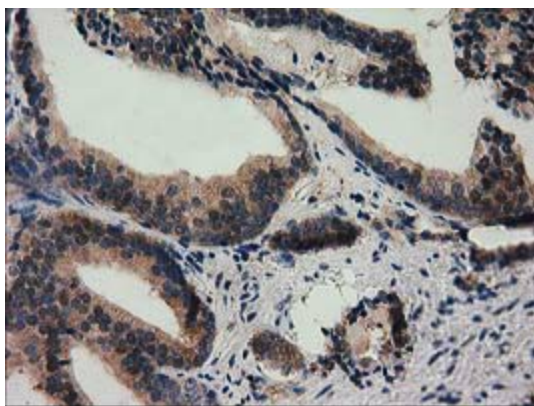
Western blot analysis of extracts (35ug) from 6 different cell by using anti-SQSTM1 monoclonal antibody (1:500).



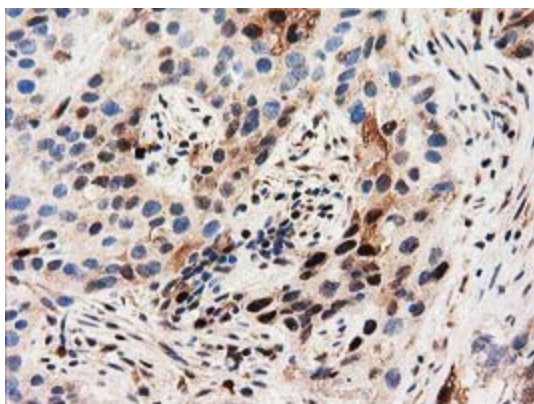
Immunohistochemical staining of paraffin-embedded Carcinoma of Human pancreas tissue using anti-SQSTM1 mouse monoclonal antibody. (Heat-induced epitope retrieval by 10mM citric buffer, pH6.0, 100°C for 10min, [TA502132])



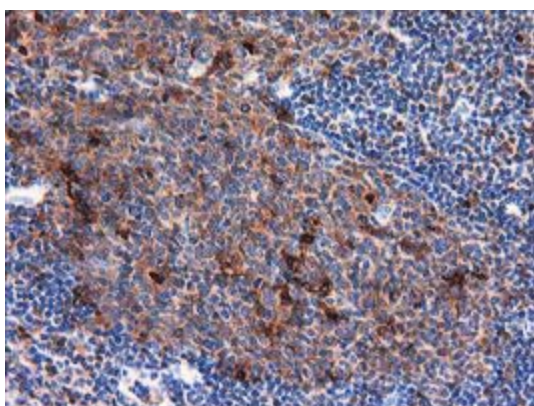
Immunohistochemical staining of paraffin-embedded Human thyroid tissue within the normal limits using anti-SQSTM1 mouse monoclonal antibody. (Heat-induced epitope retrieval by 10mM citric buffer, pH6.0, 100°C for 10min, [TA502132])



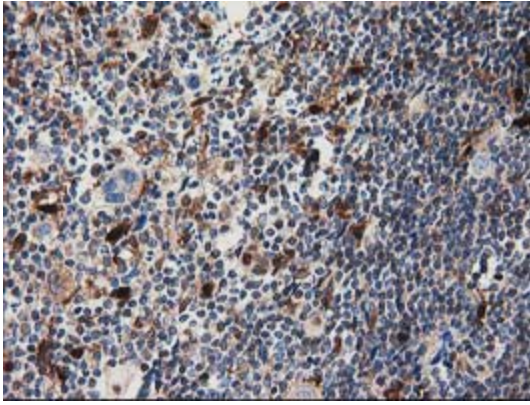
Immunohistochemical staining of paraffin-embedded Carcinoma of Human prostate tissue using anti-SQSTM1 mouse monoclonal antibody. (Heat-induced epitope retrieval by 10mM citric buffer, pH6.0, 100°C for 10min, [TA502132])



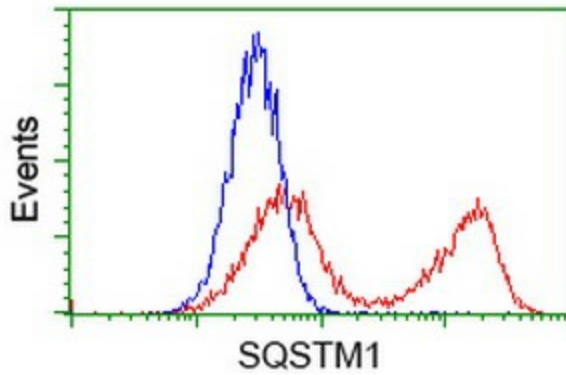
Immunohistochemical staining of paraffin-embedded Carcinoma of Human bladder tissue using anti-SQSTM1 mouse monoclonal antibody. (Heat-induced epitope retrieval by 10mM citric buffer, pH6.0, 100°C for 10min, [TA502132])



Immunohistochemical staining of paraffin-embedded Human lymph node tissue within the normal limits using anti-SQSTM1 mouse monoclonal antibody. (Heat-induced epitope retrieval by 10mM citric buffer, pH6.0, 100°C for 10min, [TA502132])



Immunohistochemical staining of paraffin-embedded Human lymphoma tissue using anti-SQSTM1 mouse monoclonal antibody. (Heat-induced epitope retrieval by 10mM citric buffer, pH6.0, 100°C for 10min, [TA502132])



HEK293T cells transfected with either [RC203214] overexpress plasmid (Red) or empty vector control plasmid (Blue) were immunostained by anti-SQSTM1 antibody ([TA502132]), and then analyzed by flow cytometry.