

## Product datasheet for **TA502127M**

### **SQSTM1 Mouse Monoclonal Antibody [Clone ID: OT1E9]**

#### **Product data:**

Product Type:	Primary Antibodies
Clone Name:	OT1E9
Applications:	FC, IF, IHC, WB
Recommended Dilution:	WB 1:500~2000, IHC 1:150, IF 1:100, FLOW 1:100
Reactivity:	Human, Monkey
Host:	Mouse
Isotype:	IgG2b
Clonality:	Monoclonal
Immunogen:	Full length human recombinant protein of human SQSTM1 (NP_003891) produced in HEK293T cell.
Formulation:	PBS (pH 7.3) containing 1% BSA, 50% glycerol and 0.02% sodium azide.
Concentration:	0.86 mg/ml
Purification:	Purified from mouse ascites fluids or tissue culture supernatant by affinity chromatography (protein A/G)
Conjugation:	Unconjugated
Storage:	Store at -20°C as received.
Stability:	Stable for 12 months from date of receipt.
Predicted Protein Size:	47.5 kDa
Gene Name:	sequestosome 1
Database Link:	<a href="#">NP_003891</a> <a href="#">Entrez Gene 705481 Monkey</a> <a href="#">Entrez Gene 8878 Human</a> <a href="#">Q13501</a>


[View online »](#)

**Background:**

This gene encodes a multifunctional protein that binds ubiquitin and regulates activation of the nuclear factor kappa-B (NF- $\kappa$ B) signaling pathway. The protein functions as a scaffolding/adaptor protein in concert with TNF receptor-associated factor 6 to mediate activation of NF- $\kappa$ B in response to upstream signals. Alternatively spliced transcript variants encoding either the same or different isoforms have been identified for this gene. Mutations in this gene result in sporadic and familial Paget disease of bone. [provided by RefSeq, Mar 2009]

**Synonyms:**

A170; OSIL; p60; p62; p62B; PDB3; ZIP3

**Protein Families:**

Druggable Genome, Transcription Factors

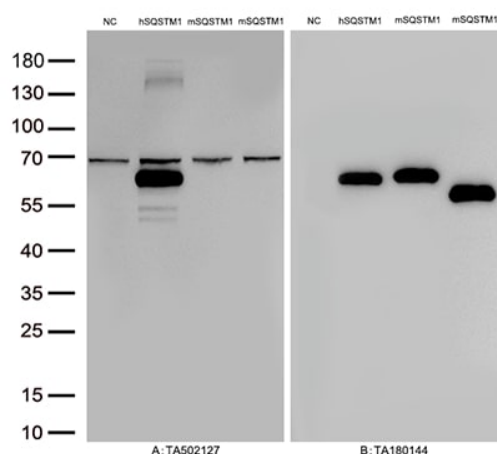
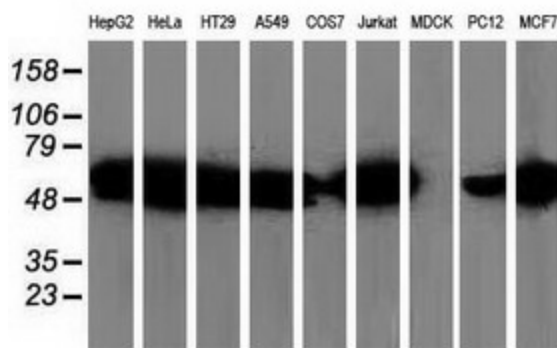
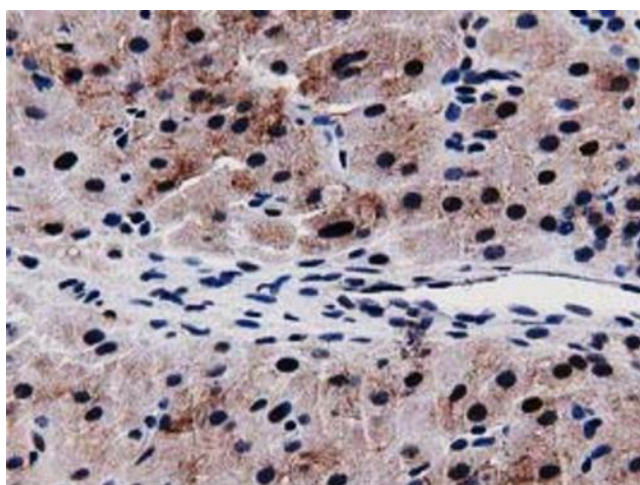
**Product images:**


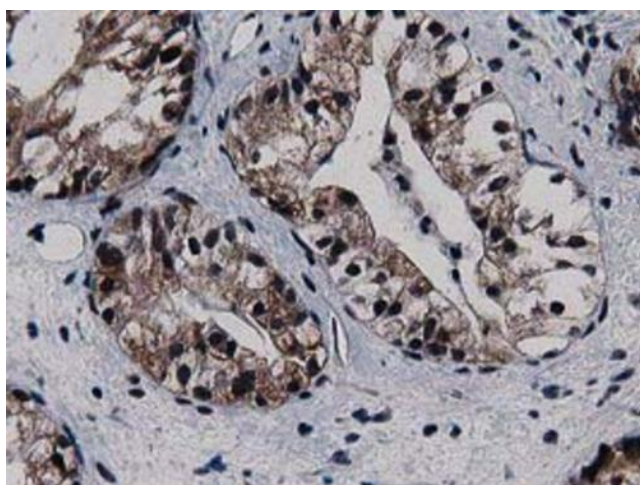
Figure A, Western blot analysis of overexpressed lysates (25ug per lane) from HEK293T cells transfected with empty plasmid ([PS100001], NC), human SQSTM1 plasmid ([RC203214], hSQSTM1), mouse SQSTM1 plasmid ([MR226105], mSQSTM1), mouse SQSTM1 plasmid ([MR206359], mSQSTM1) using anti-SQSTM1 antibody [TA502127] (1:500). Figure B, Western blot analysis of the same samples as figure A with anti-DDK antibody ([TA180144], 1:1000)



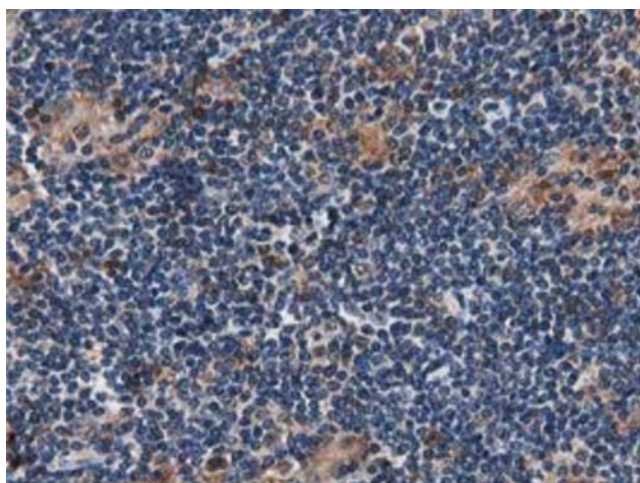
Western blot analysis of extracts (35ug) from 9 different cell lines by using anti-SQSTM1 monoclonal antibody (HepG2: human; HeLa: human; SVT2: mouse; A549: human; COS7: monkey; Jurkat: human; MDCK: canine; PC12: rat; MCF7: human).



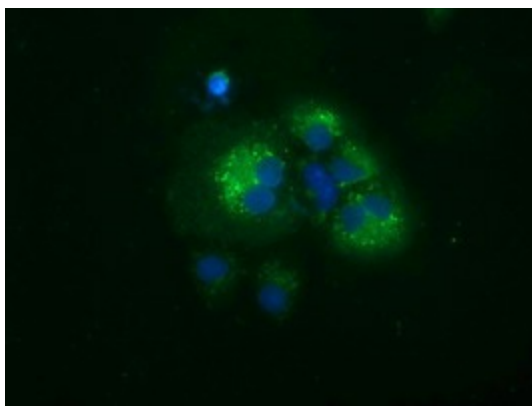
Immunohistochemical staining of paraffin-embedded Human Ovary tissue within the normal limits using anti-SQSTM1 mouse monoclonal antibody. Heat-induced epitope retrieval by EDTA solution buffer pH 8.0 at 120°C for 3 min.



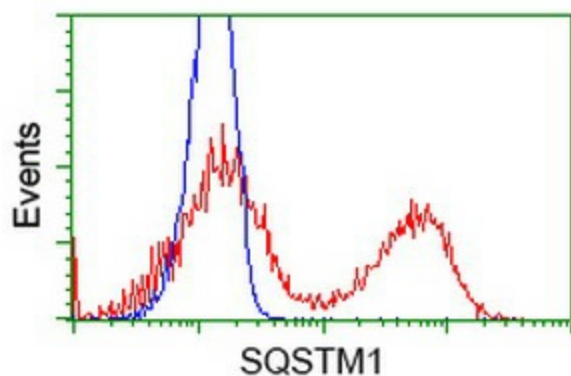
Immunohistochemical staining of paraffin-embedded Adenocarcinoma of Human ovary tissue using anti-SQSTM1 mouse monoclonal antibody. Heat-induced epitope retrieval by EDTA solution buffer pH 8.0 at 120°C for 3 min.



Immunohistochemical staining of paraffin-embedded Human lymphoma tissue using anti-SQSTM1 mouse monoclonal antibody. Heat-induced epitope retrieval by EDTA solution buffer pH 8.0 at 120°C for 3 min.



Anti-SQSTM1 mouse monoclonal antibody ([TA502127]) immunofluorescent staining of COS7 cells transiently transfected by pCMV6-ENTRY SQSTM1 ([RC203214]).



HEK293T cells transfected with either [RC203214] overexpress plasmid (Red) or empty vector control plasmid (Blue) were immunostained by anti-SQSTM1 antibody ([TA502127]), and then analyzed by flow cytometry.