

Product datasheet for **TA502117BM**

MYD88 Mouse Monoclonal Antibody (HRP conjugated) [Clone ID: OTI2B2]

Product data:

Product Type:	Primary Antibodies
Clone Name:	OTI2B2
Applications:	FC, IF, IHC, WB
Recommended Dilution:	WB 1:2000, IHC 1:150, IF 1:100, FLOW 1:100
Reactivity:	Human
Host:	Mouse
Isotype:	IgG2a
Clonality:	Monoclonal
Immunogen:	Full length human recombinant protein of human MYD88 (NP_002459) produced in HEK293T cell.
Formulation:	PBS (pH 7.3) containing 1% BSA, 50% glycerol.
Concentration:	0.5 mg/ml
Purification:	Purified from mouse ascites fluids or tissue culture supernatant by affinity chromatography (protein A/G)
Conjugation:	HRP
Storage:	Store at -20°C as received.
Stability:	Stable for 12 months from date of receipt.
Predicted Protein Size:	33.1 kDa
Gene Name:	MYD88 innate immune signal transduction adaptor
Database Link:	NP_002459 Entrez Gene 4615 Human Q99836



[View online »](#)

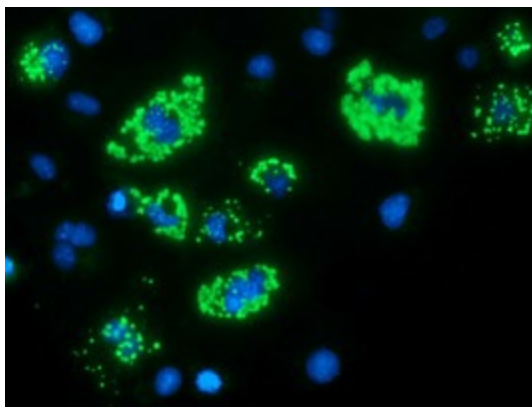
Background: This gene encodes a cytosolic adapter protein that plays a central role in the innate and adaptive immune response. This protein functions as an essential signal transducer in the interleukin-1 and Toll-like receptor signaling pathways. These pathways regulate that activation of numerous proinflammatory genes. The encoded protein consists of an N-terminal death domain and a C-terminal Toll-interleukin1 receptor domain. Patients with defects in this gene have an increased susceptibility to pyogenic bacterial infections. Alternate splicing results in multiple transcript variants. [provided by RefSeq]

Synonyms: MYD88D

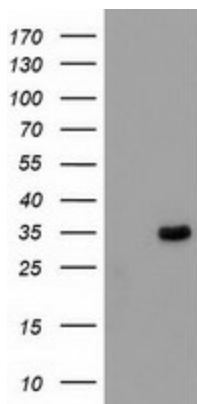
Protein Families: Druggable Genome

Protein Pathways: Apoptosis, Toll-like receptor signaling pathway

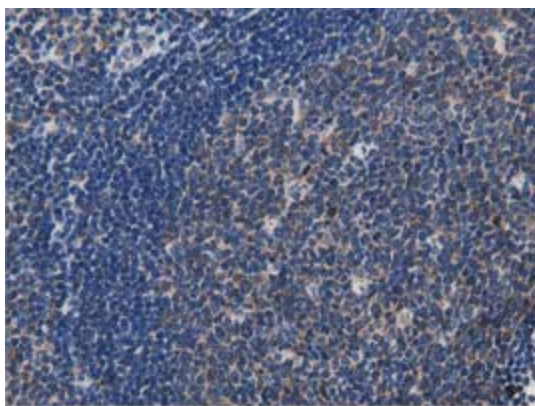
Product images:



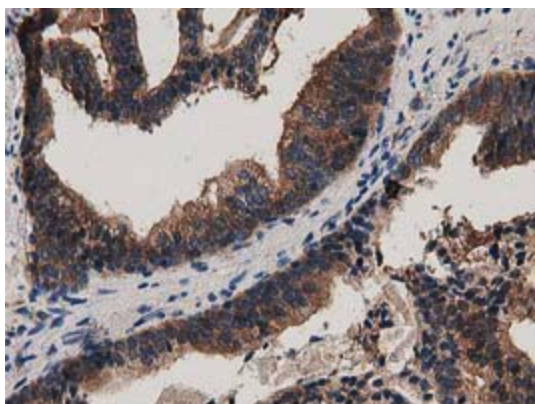
Anti-MYD88 mouse monoclonal antibody ([TA502117]) immunofluorescent staining of COS7 cells transiently transfected by pCMV6-ENTRY MYD88 ([RC202253]).



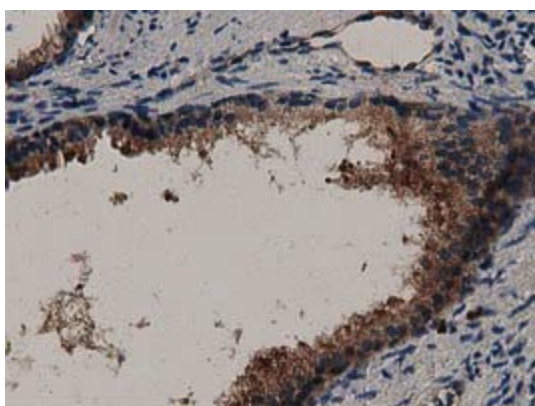
HEK293T cells were transfected with the pCMV6-ENTRY control (Cat# [PS100001], Left lane) or pCMV6-ENTRY MYD88 (Cat# [RC229151], Right lane) cDNA for 48 hrs and lysed. Equivalent amounts of cell lysates (5 ug per lane) were separated by SDS-PAGE and immunoblotted with anti-MYD88(Cat# [TA502117]). Positive lysates [LY432175] (100ug) and [LC432175] (20ug) can be purchased separately from OriGene.



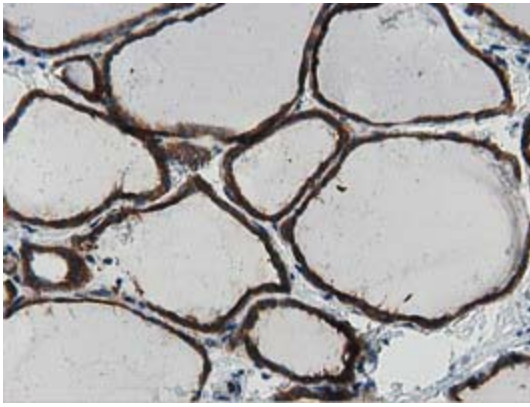
Immunohistochemical staining of paraffin-embedded Human lymph node tissue within the normal limits using anti-MYD88 mouse monoclonal antibody. (Heat-induced epitope retrieval by 10mM citric buffer, pH6.0, 100°C for 10min, [TA502117])



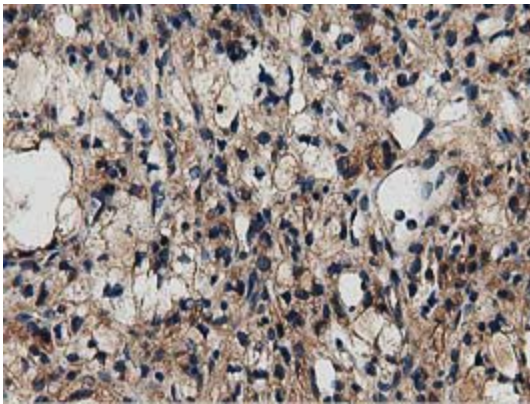
Immunohistochemical staining of paraffin-embedded Carcinoma of Human prostate tissue using anti-MYD88 mouse monoclonal antibody. (Heat-induced epitope retrieval by 10mM citric buffer, pH6.0, 100°C for 10min, [TA502117])



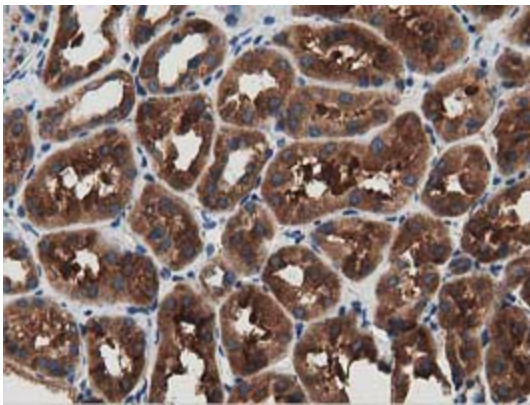
Immunohistochemical staining of paraffin-embedded Human prostate tissue within the normal limits using anti-MYD88 mouse monoclonal antibody. (Heat-induced epitope retrieval by 10mM citric buffer, pH6.0, 100°C for 10min, [TA502117])



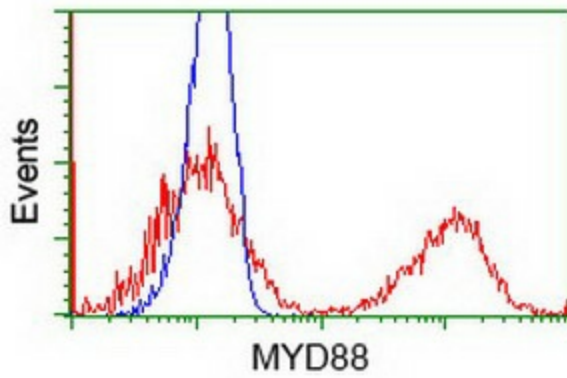
Immunohistochemical staining of paraffin-embedded Human thyroid tissue within the normal limits using anti-MYD88 mouse monoclonal antibody. (Heat-induced epitope retrieval by 10mM citric buffer, pH6.0, 100°C for 10min, [TA502117])



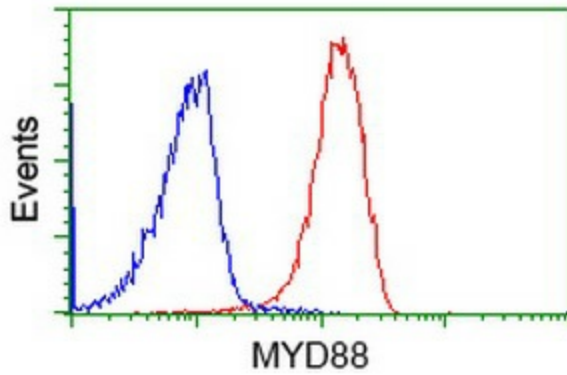
Immunohistochemical staining of paraffin-embedded Carcinoma of Human kidney tissue using anti-MYD88 mouse monoclonal antibody. (Heat-induced epitope retrieval by 10mM citric buffer, pH6.0, 100°C for 10min, [TA502117])



Immunohistochemical staining of paraffin-embedded Human Kidney tissue within the normal limits using anti-MYD88 mouse monoclonal antibody. (Heat-induced epitope retrieval by 10mM citric buffer, pH6.0, 100°C for 10min, [TA502117])



HEK293T cells transfected with either [RC202253] overexpress plasmid (Red) or empty vector control plasmid (Blue) were immunostained by anti-MYD88 antibody ([TA502117]), and then analyzed by flow cytometry.



Flow cytometric Analysis of Jurkat cells, using anti-MYD88 antibody ([TA502117]), (Red), compared to a nonspecific negative control antibody (TA50011), (Blue).