

Product datasheet for **TA502101**

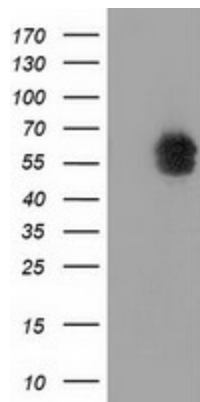
EXDL1 (EXD1) Mouse Monoclonal Antibody [Clone ID: OTI3E1]

Product data:

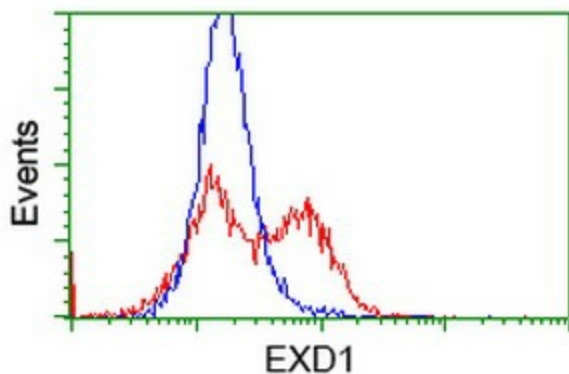
Product Type:	Primary Antibodies
Clone Name:	OTI3E1
Applications:	FC, WB
Recommended Dilution:	WB 1:2000, FLOW 1:100
Reactivity:	Human
Host:	Mouse
Isotype:	IgG1
Clonality:	Monoclonal
Immunogen:	Full length human recombinant protein of human EXD1 (NP_689809) produced in HEK293T cell.
Formulation:	PBS (pH 7.3) containing 1% BSA, 50% glycerol and 0.02% sodium azide.
Concentration:	0.54 mg/ml
Purification:	Purified from mouse ascites fluids or tissue culture supernatant by affinity chromatography (protein A/G)
Conjugation:	Unconjugated
Storage:	Store at -20°C as received.
Stability:	Stable for 12 months from date of receipt.
Predicted Protein Size:	58.2 kDa
Gene Name:	exonuclease 3'-5' domain containing 1
Database Link:	NP_689809 Entrez Gene 161829 Human Q8NHP7
Synonyms:	EXDL1



[View online »](#)

Product images:

HEK293T cells were transfected with the pCMV6-ENTRY control (Left lane) or pCMV6-ENTRY EXD1 ([RC206223], Right lane) cDNA for 48 hrs and lysed. Equivalent amounts of cell lysates (5 ug per lane) were separated by SDS-PAGE and immunoblotted with anti-EXD1. Positive lysates [LY407402] (100ug) and [LC407402] (20ug) can be purchased separately from OriGene.



HEK293T cells transfected with either [RC206223] overexpress plasmid (Red) or empty vector control plasmid (Blue) were immunostained by anti-EXD1 antibody (TA502101), and then analyzed by flow cytometry.