

## Product datasheet for **TA502098**

### EXDL1 (EXD1) Mouse Monoclonal Antibody [Clone ID: OTI5B5]

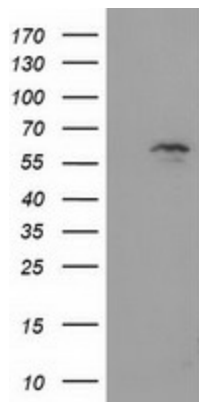
#### Product data:

Product Type:	Primary Antibodies
Clone Name:	OTI5B5
Applications:	FC, IF, WB
Recommended Dilution:	WB 1:500, IF 1:100, FLOW 1:100
Reactivity:	Human
Host:	Mouse
Isotype:	IgG1
Clonality:	Monoclonal
Immunogen:	Full length human recombinant protein of human EXD1 (NP_689809) produced in HEK293T cell.
Formulation:	PBS (pH 7.3) containing 1% BSA, 50% glycerol and 0.02% sodium azide.
Concentration:	0.58 mg/ml
Purification:	Purified from mouse ascites fluids or tissue culture supernatant by affinity chromatography (protein A/G)
Conjugation:	Unconjugated
Storage:	Store at -20°C as received.
Stability:	Stable for 12 months from date of receipt.
Predicted Protein Size:	58.2 kDa
Gene Name:	exonuclease 3'-5' domain containing 1
Database Link:	<a href="#">NP_689809</a> <a href="#">Entrez Gene 161829 Human</a> <a href="#">Q8NHP7</a>
Synonyms:	EXDL1

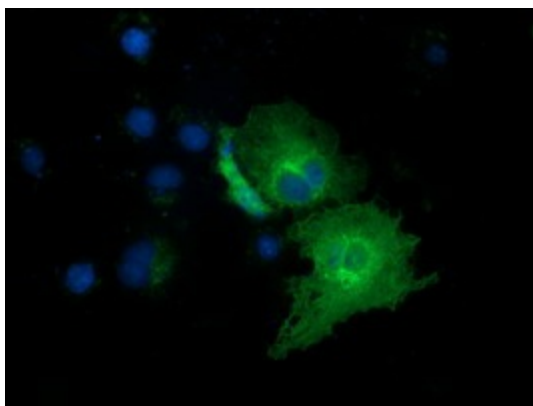


[View online »](#)

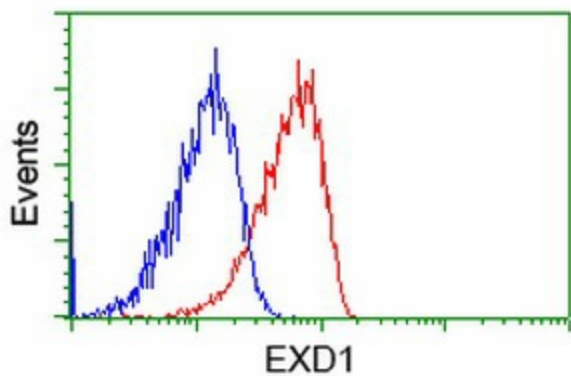
Product images:



HEK293T cells were transfected with the pCMV6-ENTRY control (Left lane) or pCMV6-ENTRY EXD1 ([RC206223], Right lane) cDNA for 48 hrs and lysed. Equivalent amounts of cell lysates (5 ug per lane) were separated by SDS-PAGE and immunoblotted with anti-EXD1. Positive lysates [LY407402] (100ug) and [LC407402] (20ug) can be purchased separately from OriGene.



Anti-EXD1 mouse monoclonal antibody (TA502098) immunofluorescent staining of COS7 cells transiently transfected by pCMV6-ENTRY EXD1 ([RC206223]).



Flow cytometric Analysis of Jurkat cells, using anti-EXD1 antibody (TA502098), (Red), compared to a nonspecific negative control antibody, (Blue).