

Product datasheet for **TA502094S**

Glutathione Synthetase (GSS) Mouse Monoclonal Antibody [Clone ID: OTI1B8]

Product data:

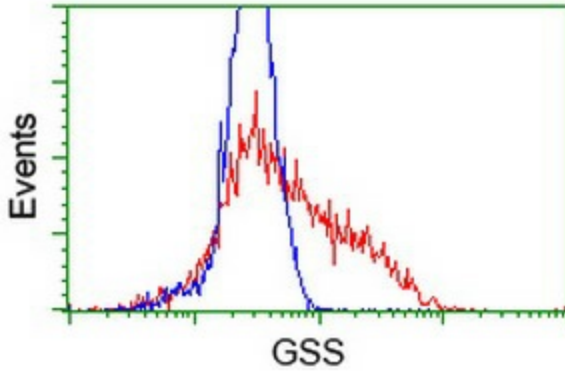
Product Type:	Primary Antibodies
Clone Name:	OTI1B8
Applications:	FC, IHC, WB
Recommended Dilution:	WB 1:2000, IHC 1:150, FLOW 1:100
Reactivity:	Human, Mouse, Rat
Host:	Mouse
Isotype:	IgG1
Clonality:	Monoclonal
Immunogen:	Full length human recombinant protein of human GSS (NP_000169) produced in HEK293T cell.
Formulation:	PBS (pH 7.3) containing 1% BSA, 50% glycerol and 0.02% sodium azide.
Concentration:	0.51 mg/ml
Purification:	Purified from mouse ascites fluids or tissue culture supernatant by affinity chromatography (protein A/G)
Conjugation:	Unconjugated
Storage:	Store at -20°C as received.
Stability:	Stable for 12 months from date of receipt.
Predicted Protein Size:	52.2 kDa
Gene Name:	glutathione synthetase
Database Link:	NP_000169 Entrez Gene 14854 Mouse Entrez Gene 25458 Rat Entrez Gene 2937 Human P48637
Background:	Glutathione is important for a variety of biological functions, including protection of cells from oxidative damage by free radicals, detoxification of xenobiotics, and membrane transport. The protein encoded by this gene functions as a homodimer to catalyze the second step of glutathione biosynthesis, which is the ATP-dependent conversion of gamma-L-glutamyl-L-cysteine to glutathione. Defects in this gene are a cause of glutathione synthetase deficiency. [provided by RefSeq]



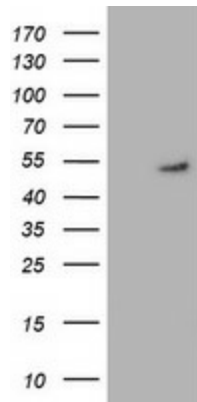
[View online »](#)

Synonyms: GSHS; HEL-S-64p; HEL-S-88n
Protein Families: Druggable Genome
Protein Pathways: Glutathione metabolism, Metabolic pathways

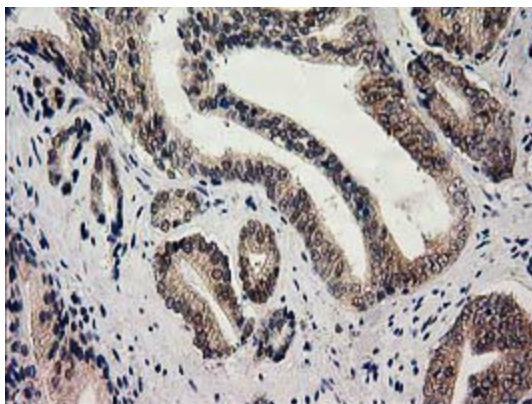
Product images:



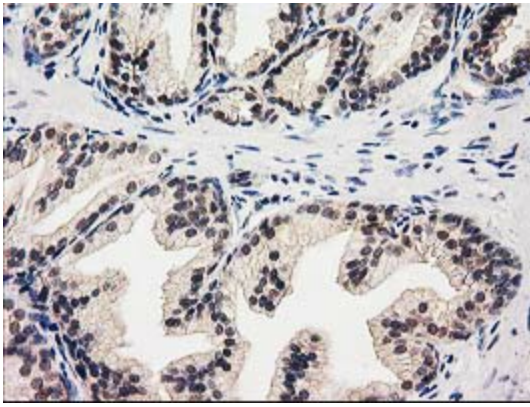
HEK293T cells transfected with either [RC203174] overexpress plasmid (Red) or empty vector control plasmid (Blue) were immunostained by anti-GSS antibody ([TA502094]), and then analyzed by flow cytometry.



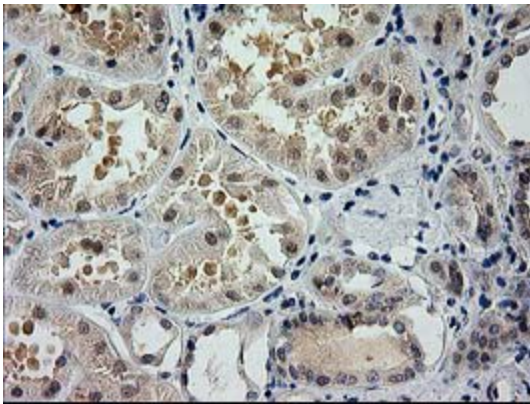
HEK293T cells were transfected with the pCMV6-ENTRY control (Cat# [PS100001], Left lane) or pCMV6-ENTRY GSS (Cat# [RC203174], Right lane) cDNA for 48 hrs and lysed. Equivalent amounts of cell lysates (5 ug per lane) were separated by SDS-PAGE and immunoblotted with anti-GSS(Cat# [TA502094]). Positive lysates [LY424876] (100ug) and [LC424876] (20ug) can be purchased separately from OriGene.



Immunohistochemical staining of paraffin-embedded Carcinoma of Human prostate tissue using anti-GSS mouse monoclonal antibody. (Heat-induced epitope retrieval by 10mM citric buffer, pH6.0, 100°C for 10min, [TA502094])



Immunohistochemical staining of paraffin-embedded Human prostate tissue within the normal limits using anti-GSS mouse monoclonal antibody. (Heat-induced epitope retrieval by 10mM citric buffer, pH6.0, 100°C for 10min, [TA502094])



Immunohistochemical staining of paraffin-embedded Human Kidney tissue within the normal limits using anti-GSS mouse monoclonal antibody. (Heat-induced epitope retrieval by 10mM citric buffer, pH6.0, 100°C for 10min, [TA502094])