

Product datasheet for **TA502088S**

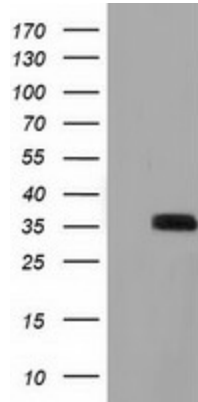
GRHPR Mouse Monoclonal Antibody [Clone ID: OTI9E6]

Product data:

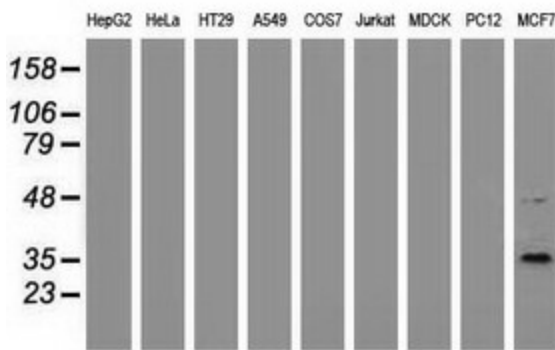
| | |
|-------------------------|--|
| Product Type: | Primary Antibodies |
| Clone Name: | OTI9E6 |
| Applications: | FC, WB |
| Recommended Dilution: | WB 1:200~500, FLOW 1:100 |
| Reactivity: | Human, Mouse, Rat |
| Host: | Mouse |
| Isotype: | IgG1 |
| Clonality: | Monoclonal |
| Immunogen: | Full length human recombinant protein of human GRHPR (NP_036335) produced in HEK293T cell. |
| Formulation: | PBS (pH 7.3) containing 1% BSA, 50% glycerol and 0.02% sodium azide. |
| Concentration: | 0.58 mg/ml |
| Purification: | Purified from mouse ascites fluids or tissue culture supernatant by affinity chromatography (protein A/G) |
| Conjugation: | Unconjugated |
| Storage: | Store at -20°C as received. |
| Stability: | Stable for 12 months from date of receipt. |
| Predicted Protein Size: | 35.5 kDa |
| Gene Name: | glyoxylate and hydroxypyruvate reductase |
| Database Link: | NP_036335 Entrez Gene 680021 Rat Entrez Gene 9380 Human Q9UBQ7 |
| Synonyms: | GLXR; GLYD; PH2 |
| Protein Families: | Druggable Genome |
| Protein Pathways: | Glyoxylate and dicarboxylate metabolism, Metabolic pathways, Pyruvate metabolism |



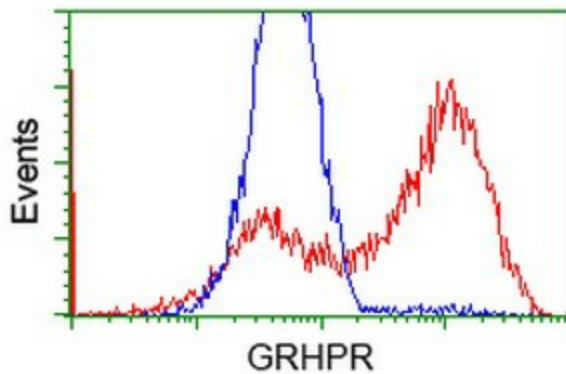
[View online »](#)

Product images:


HEK293T cells were transfected with the pCMV6-ENTRY control (Left lane) or pCMV6-ENTRY GRHPR ([RC200963], Right lane) cDNA for 48 hrs and lysed. Equivalent amounts of cell lysates (5 ug per lane) were separated by SDS-PAGE and immunoblotted with anti-GRHPR. Positive lysates [LY415912] (100ug) and [LC415912] (20ug) can be purchased separately from OriGene.



Western blot analysis of extracts (35ug) from 9 different cell lines by using anti-GRHPR monoclonal antibody.



HEK293T cells transfected with either [RC200963] overexpress plasmid (Red) or empty vector control plasmid (Blue) were immunostained by anti-GRHPR antibody ([TA502088]), and then analyzed by flow cytometry.