

## Product datasheet for **TA502086BM**

### GRHPR Mouse Monoclonal Antibody (HRP conjugated) [Clone ID: OTI1A9]

#### Product data:

Product Type:	Primary Antibodies
Clone Name:	OTI1A9
Applications:	FC, IHC, WB
Recommended Dilution:	WB 1:500~2000, IHC 1:150, FLOW 1:100
Reactivity:	Human, Mouse, Rat
Host:	Mouse
Isotype:	IgG1
Clonality:	Monoclonal
Immunogen:	Full length human recombinant protein of human GRHPR (NP_036335) produced in HEK293T cell.
Formulation:	PBS (pH 7.3) containing 1% BSA, 50% glycerol.
Concentration:	0.5 mg/ml
Purification:	Purified from mouse ascites fluids or tissue culture supernatant by affinity chromatography (protein A/G)
Conjugation:	HRP
Storage:	Store at -20°C as received.
Stability:	Stable for 12 months from date of receipt.
Predicted Protein Size:	35.5 kDa
Gene Name:	glyoxylate and hydroxypyruvate reductase
Database Link:	<a href="#">NP_036335</a> <a href="#">Entrez Gene 680021 Rat</a> <a href="#">Entrez Gene 9380 Human</a> <a href="#">Q9UBQ7</a>
Background:	This gene encodes an enzyme with hydroxypyruvate reductase, glyoxylate reductase, and D-glycerate dehydrogenase enzymatic activities. The enzyme has widespread tissue expression and has a role in metabolism. Type II hyperoxaluria is caused by mutations in this gene. [provided by RefSeq]
Synonyms:	GLXR; GLYD; PH2

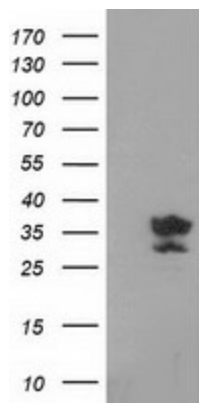


[View online »](#)

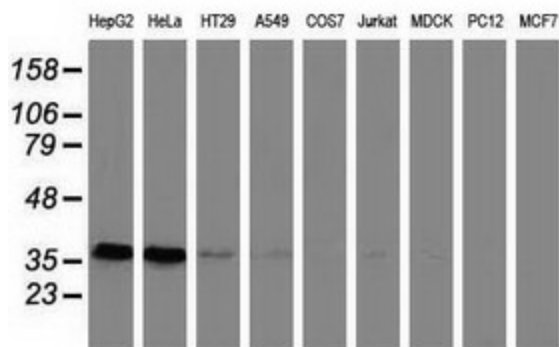
**Protein Families:** Druggable Genome

**Protein Pathways:** Glyoxylate and dicarboxylate metabolism, Metabolic pathways, Pyruvate metabolism

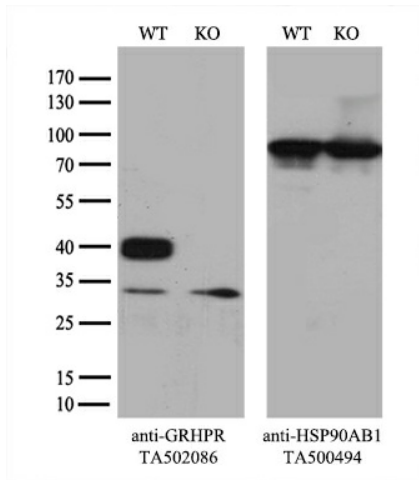
**Product images:**



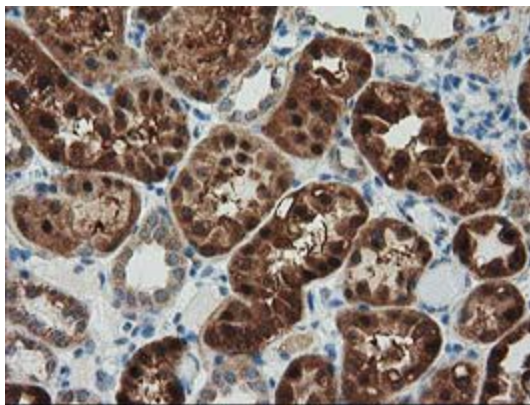
HEK293T cells were transfected with the pCMV6-ENTRY control (Left lane) or pCMV6-ENTRY GRHPR ([RC200963], Right lane) cDNA for 48 hrs and lysed. Equivalent amounts of cell lysates (5 ug per lane) were separated by SDS-PAGE and immunoblotted with anti-GRHPR. Positive lysates [LY415912] (100ug) and [LC415912] (20ug) can be purchased separately from OriGene.



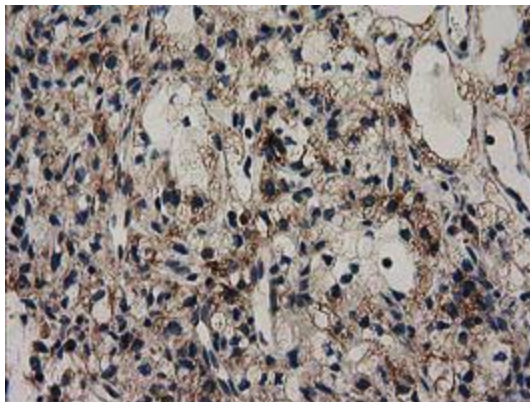
Western blot analysis of extracts (35ug) from 9 different cell lines by using anti-GRHPR monoclonal antibody.



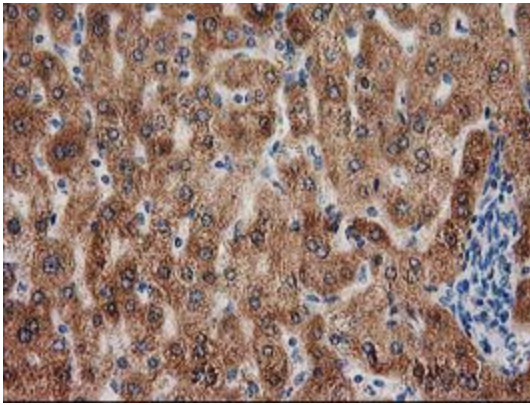
Equivalent amounts of cell lysates (10 ug per lane) of wild-type 293T cells (WT, Cat# LC810293T) and GRHPR-Knockout 293T cells (KO, Cat# [LC841943]) were separated by SDS-PAGE and immunoblotted with anti-GRHPR monoclonal antibody [TA502086] (1:500<sup>\*</sup>). Then the blotted membrane was stripped and reprobed with anti-HSP90 antibody as a loading control.



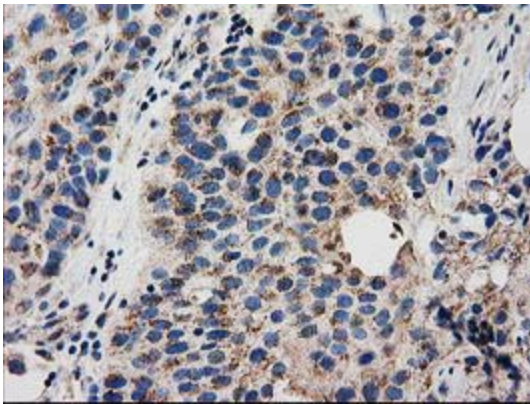
Immunohistochemical staining of paraffin-embedded Human Kidney tissue within the normal limits using anti-GRHPR mouse monoclonal antibody. (Heat-induced epitope retrieval by 10mM citric buffer, pH6.0, 100°C for 10min, [TA502086])



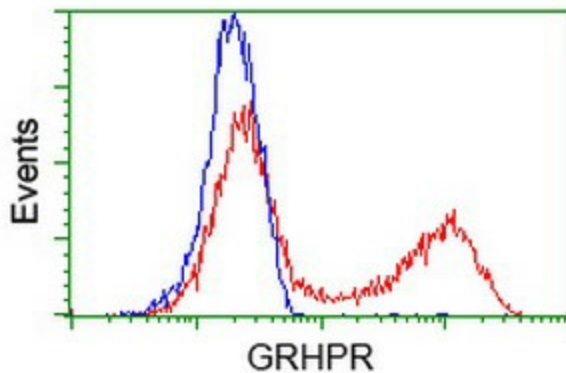
Immunohistochemical staining of paraffin-embedded Carcinoma of Human kidney tissue using anti-GRHPR mouse monoclonal antibody. (Heat-induced epitope retrieval by 10mM citric buffer, pH6.0, 100°C for 10min, [TA502086])



Immunohistochemical staining of paraffin-embedded Human liver tissue within the normal limits using anti-GRHPR mouse monoclonal antibody. (Heat-induced epitope retrieval by 10mM citric buffer, pH6.0, 100°C for 10min, [TA502086])



Immunohistochemical staining of paraffin-embedded Carcinoma of Human bladder tissue using anti-GRHPR mouse monoclonal antibody. (Heat-induced epitope retrieval by 10mM citric buffer, pH6.0, 100°C for 10min, [TA502086])



HEK293T cells transfected with either [RC200963] overexpress plasmid (Red) or empty vector control plasmid (Blue) were immunostained by anti-GRHPR antibody ([TA502086]), and then analyzed by flow cytometry.