

## Product datasheet for **TA502078AM**

### **PYCR3 Mouse Monoclonal Antibody (Biotin conjugated) [Clone ID: OTI1B12]**

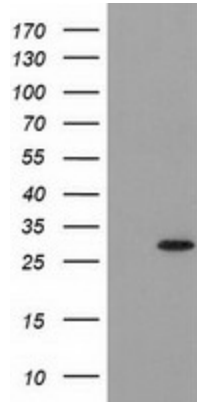
#### **Product data:**

<b>Product Type:</b>	Primary Antibodies
<b>Clone Name:</b>	OTI1B12
<b>Applications:</b>	FC, IF, IHC, WB
<b>Recommended Dilution:</b>	WB 1:500~2000, IHC 1:150, IF 1:100, FLOW 1:100
<b>Reactivity:</b>	Human, Rat
<b>Host:</b>	Mouse
<b>Isotype:</b>	IgG1
<b>Clonality:</b>	Monoclonal
<b>Immunogen:</b>	Full length human recombinant protein of human PYCRL (NP_075566) produced in HEK293T cell.
<b>Formulation:</b>	PBS (pH 7.3) containing 1% BSA, 50% glycerol and 0.02% sodium azide.
<b>Concentration:</b>	0.5 mg/ml
<b>Purification:</b>	Purified from mouse ascites fluids or tissue culture supernatant by affinity chromatography (protein A/G)
<b>Conjugation:</b>	Biotin
<b>Storage:</b>	Store at -20°C as received.
<b>Stability:</b>	Stable for 12 months from date of receipt.
<b>Predicted Protein Size:</b>	28.5 kDa
<b>Gene Name:</b>	pyrroline-5-carboxylate reductase 3
<b>Database Link:</b>	<a href="#">NP_075566</a> <a href="#">Entrez Gene 300035 Rat</a> <a href="#">Entrez Gene 65263 Human</a> <a href="#">Q53H96</a>
<b>Synonyms:</b>	PYCR3
<b>Protein Pathways:</b>	Arginine and proline metabolism, Metabolic pathways

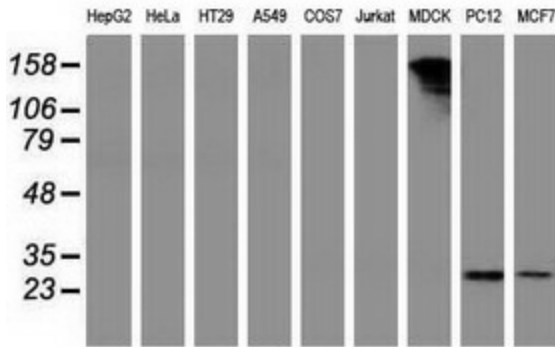


[View online »](#)

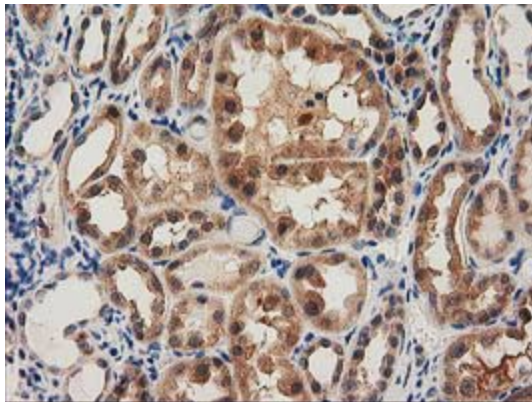
**Product images:**



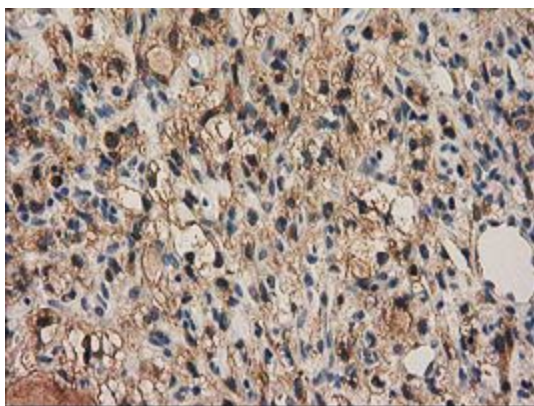
HEK293T cells were transfected with the pCMV6-ENTRY control (Left lane) or pCMV6-ENTRY PYCRL ([RC229141], Right lane) cDNA for 48 hrs and lysed. Equivalent amounts of cell lysates (5 ug per lane) were separated by SDS-PAGE and immunoblotted with anti-PYCRL. Positive lysates [LY411510] (100ug) and [LC411510] (20ug) can be purchased separately from OriGene.



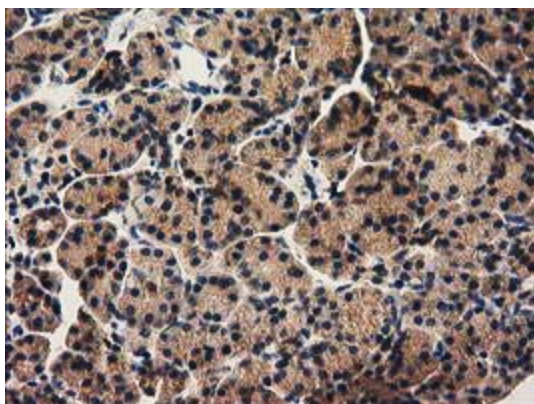
Western blot analysis of extracts (35ug) from 9 different cell lines by using anti-PYCRL monoclonal antibody.



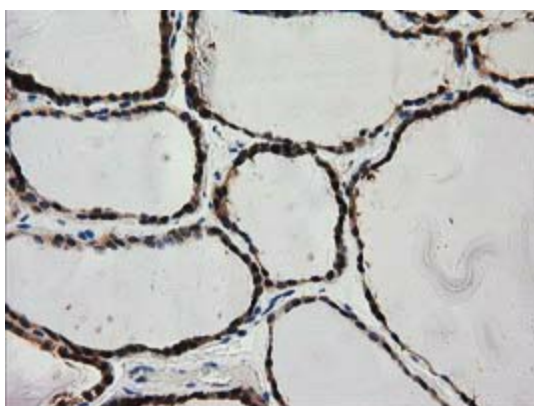
Immunohistochemical staining of paraffin-embedded Human Kidney tissue within the normal limits using anti-PYCRL mouse monoclonal antibody. (Heat-induced epitope retrieval by 10mM citric buffer, pH6.0, 100°C for 10min, [TA502078])



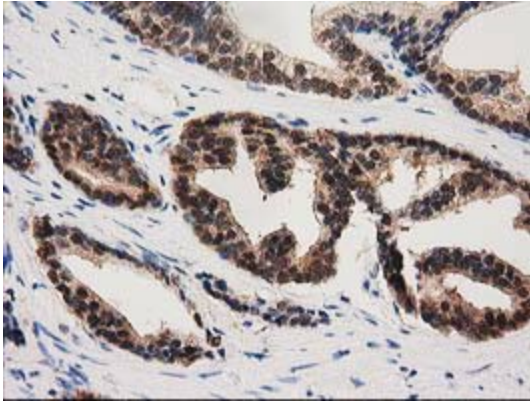
Immunohistochemical staining of paraffin-embedded Carcinoma of Human kidney tissue using anti-PYCR3 mouse monoclonal antibody. (Heat-induced epitope retrieval by 10mM citric buffer, pH6.0, 100°C for 10min, [TA502078])



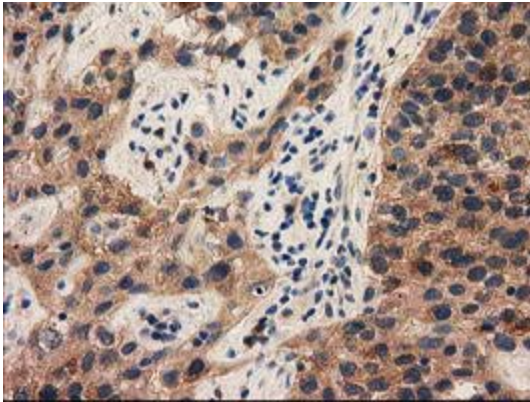
Immunohistochemical staining of paraffin-embedded Human pancreas tissue within the normal limits using anti-PYCR3 mouse monoclonal antibody. (Heat-induced epitope retrieval by 10mM citric buffer, pH6.0, 100°C for 10min, [TA502078])



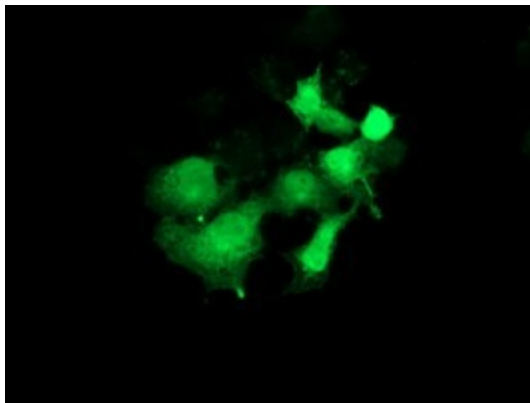
Immunohistochemical staining of paraffin-embedded Human thyroid tissue within the normal limits using anti-PYCR3 mouse monoclonal antibody. (Heat-induced epitope retrieval by 10mM citric buffer, pH6.0, 100°C for 10min, [TA502078])



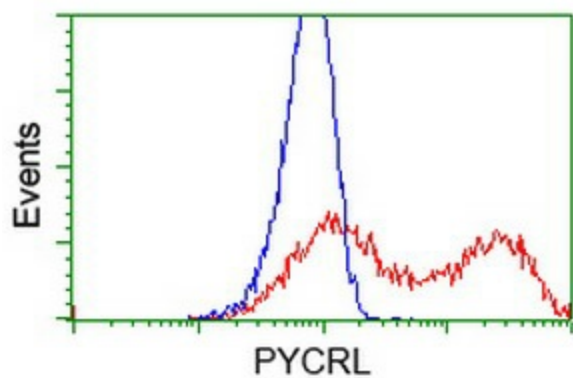
Immunohistochemical staining of paraffin-embedded Carcinoma of Human prostate tissue using anti-PYCR3 mouse monoclonal antibody. (Heat-induced epitope retrieval by 10mM citric buffer, pH6.0, 100°C for 10min, [TA502078])



Immunohistochemical staining of paraffin-embedded Carcinoma of Human bladder tissue using anti-PYCR3 mouse monoclonal antibody. (Heat-induced epitope retrieval by 10mM citric buffer, pH6.0, 100°C for 10min, [TA502078])



Anti-PYCR3 mouse monoclonal antibody ([TA502078]) immunofluorescent staining of COS7 cells transiently transfected by pCMV6-ENTRY PYCR3 ([RC203382]).



HEK293T cells transfected with either [RC203382] overexpress plasmid (Red) or empty vector control plasmid (Blue) were immunostained by anti-PYCRL antibody ([TA502078]), and then analyzed by flow cytometry.