

## Product datasheet for **TA502076**

### PPWD1 Mouse Monoclonal Antibody [Clone ID: OTI2B1]

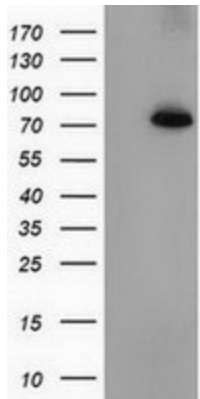
#### Product data:

Product Type:	Primary Antibodies
Clone Name:	OTI2B1
Applications:	WB
Recommended Dilution:	WB 1:200~500
Reactivity:	Human, Monkey, Mouse, Rat
Host:	Mouse
Isotype:	IgG1
Clonality:	Monoclonal
Immunogen:	Full length human recombinant protein of human PPWD1 (NP_056157) produced in HEK293T cell.
Formulation:	PBS (pH 7.3) containing 1% BSA, 50% glycerol and 0.02% sodium azide.
Concentration:	0.52 mg/ml
Purification:	Purified from mouse ascites fluids or tissue culture supernatant by affinity chromatography (protein A/G)
Conjugation:	Unconjugated
Storage:	Store at -20°C as received.
Stability:	Stable for 12 months from date of receipt.
Predicted Protein Size:	73.4 kDa
Gene Name:	peptidylprolyl isomerase domain and WD repeat containing 1
Database Link:	<a href="#">NP_056157</a> <a href="#">Entrez Gene 238831</a> <a href="#">MouseEntrez Gene 294711</a> <a href="#">RatEntrez Gene 696267</a> <a href="#">MonkeyEntrez Gene 23398</a> <a href="#">Human Q96BP3</a>
Synonyms:	KIAA0073

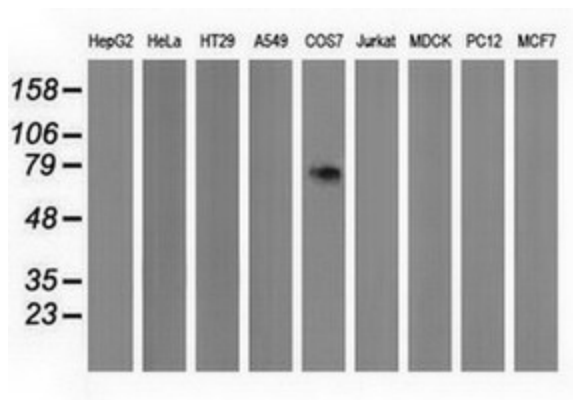


[View online »](#)

**Product images:**



HEK293T cells were transfected with the pCMV6-ENTRY control (Left lane) or pCMV6-ENTRY PPWD1 ([RC204570], Right lane) cDNA for 48 hrs and lysed. Equivalent amounts of cell lysates (5 ug per lane) were separated by SDS-PAGE and immunoblotted with anti-PPWD1. Positive lysates [LY414604] (100ug) and [LC414604] (20ug) can be purchased separately from OriGene.



Western blot analysis of extracts (35ug) from 9 different cell lines by using anti-PPWD1 monoclonal antibody.