

Product datasheet for **TA502075BM**

CLPP Mouse Monoclonal Antibody (HRP conjugated) [Clone ID: OTI1D3]

Product data:

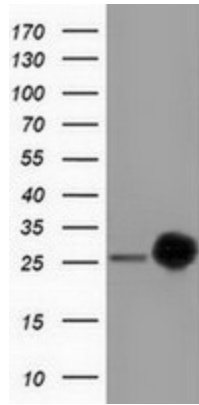
Product Type:	Primary Antibodies
Clone Name:	OTI1D3
Applications:	FC, IF, WB
Recommended Dilution:	WB 1:500~2000, IF 1:100, FLOW 1:100
Reactivity:	Human, Dog, Rat, Monkey, Mouse
Host:	Mouse
Isotype:	IgG2b
Clonality:	Monoclonal
Immunogen:	Full length human recombinant protein of human CLPP (NP_006003) produced in HEK293T cell.
Formulation:	PBS (pH 7.3) containing 1% BSA, 50% glycerol.
Concentration:	0.5 mg/ml
Purification:	Purified from mouse ascites fluids or tissue culture supernatant by affinity chromatography (protein A/G)
Conjugation:	HRP
Storage:	Store at -20°C as received.
Stability:	Stable for 12 months from date of receipt.
Predicted Protein Size:	24.1 kDa
Gene Name:	caseinolytic mitochondrial matrix peptidase proteolytic subunit
Database Link:	NP_006003 Entrez Gene 301117 Rat Entrez Gene 611738 Dog Entrez Gene 699593 Monkey Entrez Gene 8192 Human Q16740
Background:	The protein encoded by this gene belongs to the peptidase family S14 and hydrolyzes proteins into small peptides in the presence of ATP and magnesium. The protein is transported into mitochondrial matrix and is associated with the inner mitochondrial membrane. [provided by RefSeq]. COMPLETENESS: complete on the 3' end.



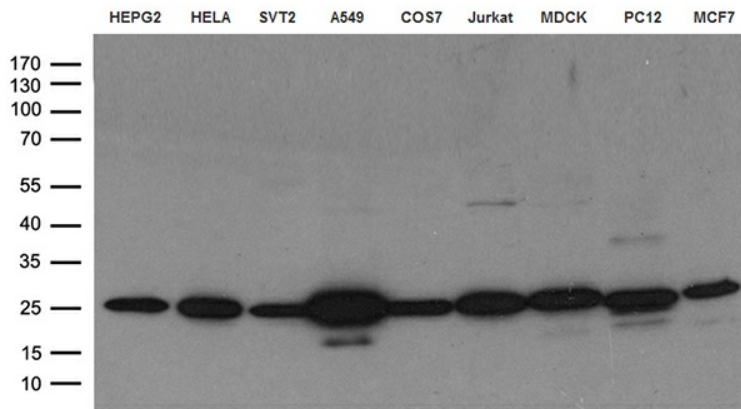
[View online »](#)

Synonyms: DFNB81; PRLTS3
Protein Families: Druggable Genome, Protease

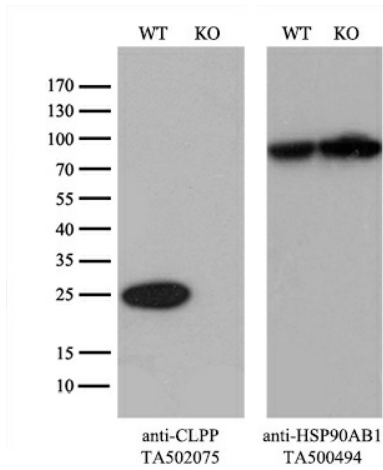
Product images:



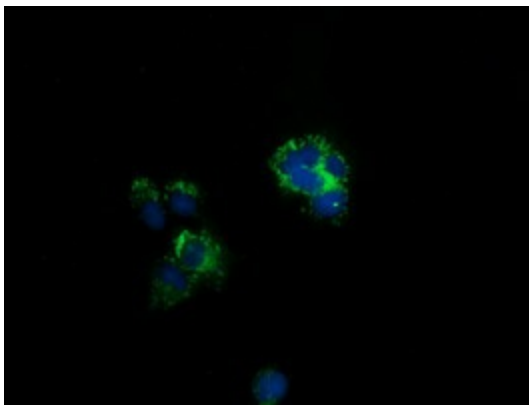
HEK293T cells were transfected with the pCMV6-ENTRY control (Left lane) or pCMV6-ENTRY CLPP ([RC200301], Right lane) cDNA for 48 hrs and lysed. Equivalent amounts of cell lysates (5 ug per lane) were separated by SDS-PAGE and immunoblotted with anti-CLPP. Positive lysates [LY416925] (100ug) and [LC416925] (20ug) can be purchased separately from OriGene.



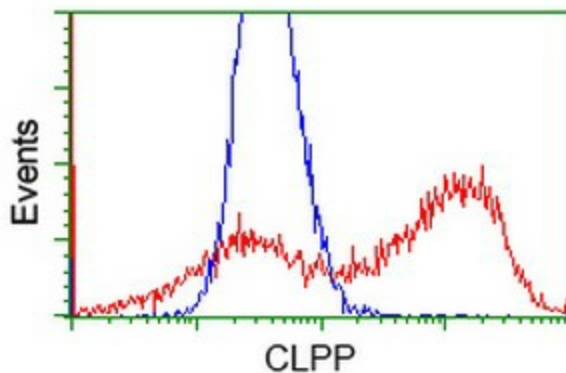
Western blot analysis of extracts (35ug) from 9 different cell lines by using anti-CLPP monoclonal antibody (HepG2: human; HeLa: human; SVT2: mouse; A549: human; COS7: monkey; Jurkat: human; MDCK: canine; PC12: rat; MCF7: human) (1:500).



Equivalent amounts of cell lysates (10 ug per lane) of wild-type 293T cells (WT, Cat# LC810293T) and CLPP-Knockout 293T cells (KO, Cat# [LC811671]) were separated by SDS-PAGE and immunoblotted with anti-CLPP monoclonal antibody [TA502075], (1:500). Then the blotted membrane was stripped and reprobed with anti-HSP90AB1 antibody ([TA500494]) as a loading control.



Anti-CLPP mouse monoclonal antibody ([TA502075]) immunofluorescent staining of COS7 cells transiently transfected by pCMV6-ENTRY CLPP ([RC200301]).



HEK293T cells transfected with either [RC200301] overexpress plasmid (Red) or empty vector control plasmid (Blue) were immunostained by anti-CLPP antibody ([TA502075]), and then analyzed by flow cytometry.