

Product datasheet for **TA502068S**

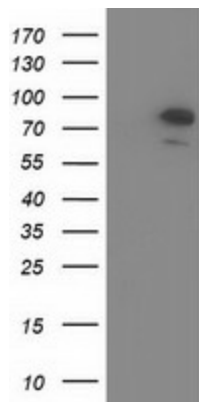
OSBPL11 Mouse Monoclonal Antibody [Clone ID: OTI6A6]

Product data:

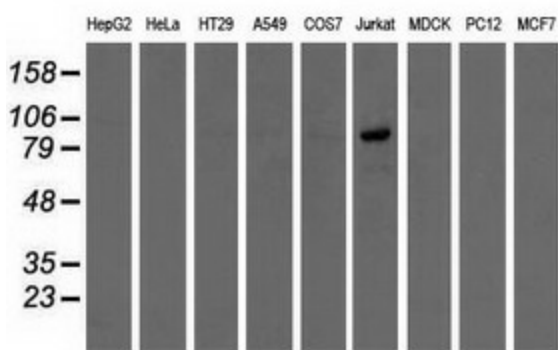
Product Type:	Primary Antibodies
Clone Name:	OTI6A6
Applications:	FC, IF, WB
Recommended Dilution:	WB 1:500~2000, IF 1:100, FLOW 1:100
Reactivity:	Human, Mouse, Rat
Host:	Mouse
Isotype:	IgG1
Clonality:	Monoclonal
Immunogen:	Full length human recombinant protein of human OSBPL11 (NP_073613) produced in HEK293T cell.
Formulation:	PBS (pH 7.3) containing 1% BSA, 50% glycerol and 0.02% sodium azide.
Concentration:	0.78 mg/ml
Purification:	Purified from mouse ascites fluids or tissue culture supernatant by affinity chromatography (protein A/G)
Conjugation:	Unconjugated
Storage:	Store at -20°C as received.
Stability:	Stable for 12 months from date of receipt.
Predicted Protein Size:	83.5 kDa
Gene Name:	oxysterol binding protein like 11
Database Link:	NP_073613 Entrez Gene 106326 Mouse Entrez Gene 303888 Rat Entrez Gene 114885 Human Q9BXB4
Background:	This gene encodes a member of the oxysterol-binding protein (OSBP) family, a group of intracellular lipid receptors. Like most members, the encoded protein contains an N-terminal pleckstrin homology domain and a highly conserved C-terminal OSBP-like sterol-binding domain. [provided by RefSeq]. COMPLETENESS: complete on the 3' end.
Synonyms:	ORP-11; ORP11; OSBP12; TCCCIA00292



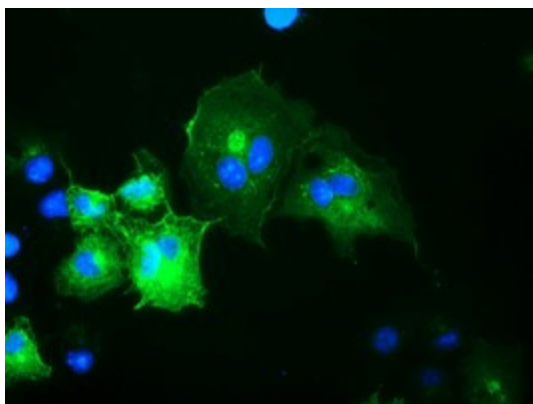
[View online »](#)

Product images:


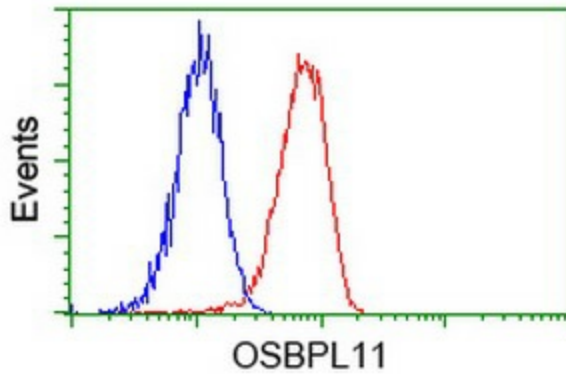
HEK293T cells were transfected with the pCMV6-ENTRY control (Cat# [PS100001], Left lane) or pCMV6-ENTRY OSBPL11 (Cat# [RC209418], Right lane) cDNA for 48 hrs and lysed. Equivalent amounts of cell lysates (5 ug per lane) were separated by SDS-PAGE and immunoblotted with anti-OSBPL11(Cat# [TA502068]). Positive lysates [LY411565] (100ug) and [LC411565] (20ug) can be purchased separately from OriGene.



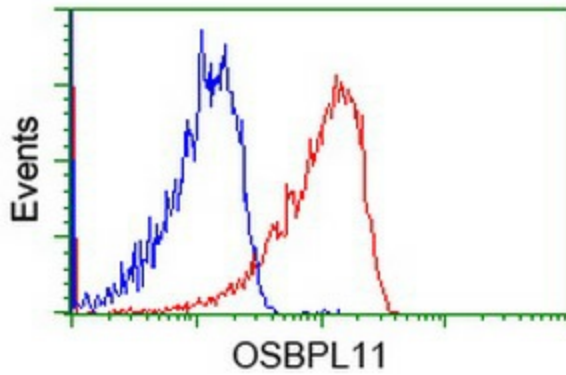
Western blot analysis of extracts (35ug) from 9 different cell lines by using anti-OSBPL11 monoclonal antibody.



Anti-OSBPL11 mouse monoclonal antibody ([TA502068]) immunofluorescent staining of COS7 cells transiently transfected by pCMV6-ENTRY OSBPL11 ([RC209418]).



Flow cytometric Analysis of HeLa cells, using anti-OSBPL11 antibody ([TA502068]), (Red), compared to a nonspecific negative control antibody (TA50011), (Blue).



Flow cytometric Analysis of Jurkat cells, using anti-OSBPL11 antibody ([TA502068]), (Red), compared to a nonspecific negative control antibody (TA50011), (Blue).