

## Product datasheet for **TA502059BM**

### **KEAP1 Mouse Monoclonal Antibody (HRP conjugated) [Clone ID: OTI1B4]**

#### **Product data:**

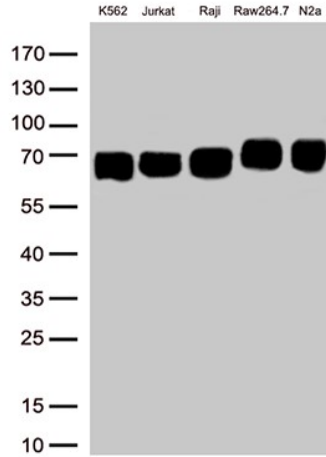
<b>Product Type:</b>	Primary Antibodies
<b>Clone Name:</b>	OTI1B4
<b>Applications:</b>	FC, IF, WB
<b>Recommended Dilution:</b>	WB 1:500~2000, FLOW 1:100
<b>Reactivity:</b>	Human, Mouse, Rat
<b>Host:</b>	Mouse
<b>Isotype:</b>	IgG1
<b>Clonality:</b>	Monoclonal
<b>Immunogen:</b>	Full length human recombinant protein of human KEAP1(NP_987096) produced in HEK293T cell.
<b>Formulation:</b>	PBS (pH 7.4) containing 1% BSA, 50% glycerol.
<b>Concentration:</b>	0.5 mg/ml
<b>Purification:</b>	Purified from mouse ascites fluids or tissue culture supernatant by affinity chromatography (protein A/G)
<b>Conjugation:</b>	HRP
<b>Storage:</b>	Store at -20°C as received.
<b>Stability:</b>	Stable for 12 months from date of receipt.
<b>Predicted Protein Size:</b>	69.5 kDa
<b>Gene Name:</b>	kelch like ECH associated protein 1
<b>Database Link:</b>	<a href="#">NP_987096</a> <a href="#">Entrez Gene 50868 Mouse</a> <a href="#">Entrez Gene 117519 Rat</a> <a href="#">Entrez Gene 9817 Human</a> <a href="#">Q14145</a>
<b>Background:</b>	This gene encodes a protein containing KELCH-1 like domains, as well as a BTB/POZ domain. Kelch-like ECH-associated protein 1 interacts with NF-E2-related factor 2 in a redox-sensitive manner and the dissociation of the proteins in the cytoplasm is followed by transportation of NF-E2-related factor 2 to the nucleus. This interaction results in the expression of the catalytic subunit of gamma-glutamylcysteine synthetase. Two alternatively spliced transcript variants encoding the same isoform have been found for this gene. [provided by RefSeq]



[View online »](#)

**Synonyms:** INrf2; KLHL19  
**Protein Families:** Transcription Factors  
**Protein Pathways:** Ubiquitin mediated proteolysis

**Product images:**



Western blot analysis of extracts (50ug per lane) from 5 different cell lines lysates by using anti-KEAP1 monoclonal antibody([TA502059], 1:500).

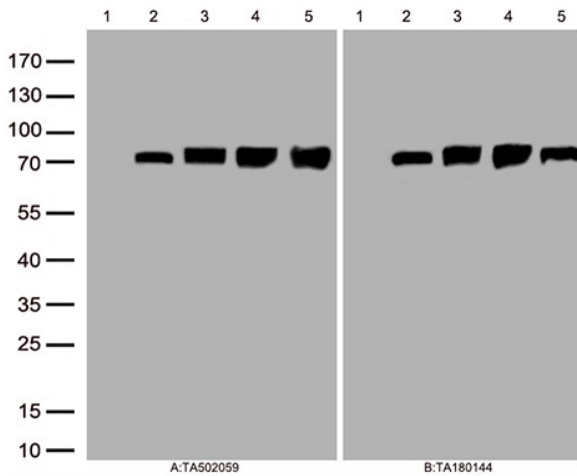


Figure A, Western blot analysis of overexpressed lysates(25ug per lane) from HEK293T cells transfected with empty plasmid ([PS100001], lane 1) , human KEAP1 plasmid ([RC202189], lane 2), mouse KEAP1 plasmid transcript variant 2 ([MR225867], lane 3), mouse KEAP1 plasmid transcript variant 4([MR209525], lane 4), rat KEAP1 plasmid ([RR201988], lane 5) using anti-KEAP1 antibody [TA502059] (1:500). Figure B, Western blot analysis of the same samples as figure A with anti-DDK antibody ([TA180144], 1:1000)