

Product datasheet for **TA502059AM**

KEAP1 Mouse Monoclonal Antibody (Biotin conjugated) [Clone ID: OTI1B4]

Product data:

Product Type:	Primary Antibodies
Clone Name:	OTI1B4
Applications:	FC, IF, WB
Recommended Dilution:	WB 1:500~2000, FLOW 1:100
Reactivity:	Human, Mouse, Rat
Host:	Mouse
Isotype:	IgG1
Clonality:	Monoclonal
Immunogen:	Full length human recombinant protein of human KEAP1(NP_987096) produced in HEK293T cell.
Concentration:	0.5 mg/ml
Purification:	Purified from mouse ascites fluids or tissue culture supernatant by affinity chromatography (protein A/G)
Conjugation:	Biotin
Storage:	Store at -20°C as received.
Stability:	Stable for 12 months from date of receipt.
Predicted Protein Size:	69.5 kDa
Gene Name:	kelch like ECH associated protein 1
Database Link:	NP_987096 Entrez Gene 50868 Mouse Entrez Gene 117519 Rat Entrez Gene 9817 Human Q14145
Background:	This gene encodes a protein containing KELCH-1 like domains, as well as a BTB/POZ domain. Kelch-like ECH-associated protein 1 interacts with NF-E2-related factor 2 in a redox-sensitive manner and the dissociation of the proteins in the cytoplasm is followed by transportation of NF-E2-related factor 2 to the nucleus. This interaction results in the expression of the catalytic subunit of gamma-glutamylcysteine synthetase. Two alternatively spliced transcript variants encoding the same isoform have been found for this gene. [provided by RefSeq]
Synonyms:	INrf2; KLHL19

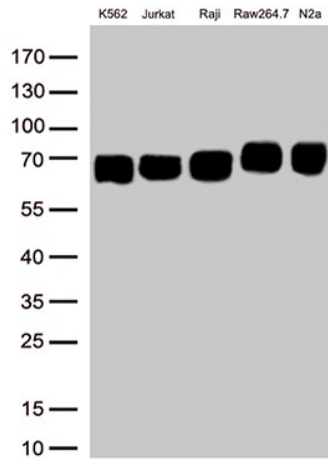


[View online »](#)

Protein Families: Transcription Factors

Protein Pathways: Ubiquitin mediated proteolysis

Product images:



Western blot analysis of extracts (50ug per lane) from 5 different cell lines lysates by using anti-KEAP1 monoclonal antibody([TA502059], 1:500).

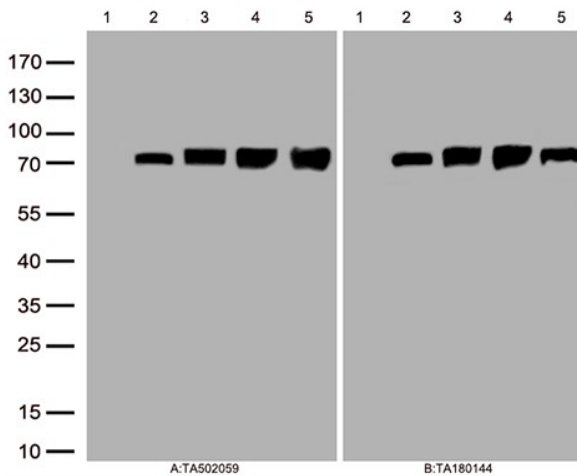


Figure A, Western blot analysis of overexpressed lysates(25ug per lane) from HEK293T cells transfected with empty plasmid ([PS100001], lane 1) , human KEAP1 plasmid ([RC202189], lane 2), mouse KEAP1 plasmid transcript variant 2 ([MR225867], lane 3), mouse KEAP1 plasmid transcript variant 4([MR209525], lane 4), rat KEAP1 plasmid ([RR201988], lane 5) using anti-KEAP1 antibody [TA502059] (1:500). Figure B, Western blot analysis of the same samples as figure A with anti-DDK antibody ([TA180144], 1:1000)