

## Product datasheet for **TA502059**

### KEAP1 Mouse Monoclonal Antibody [Clone ID: OTI1B4]

#### Product data:

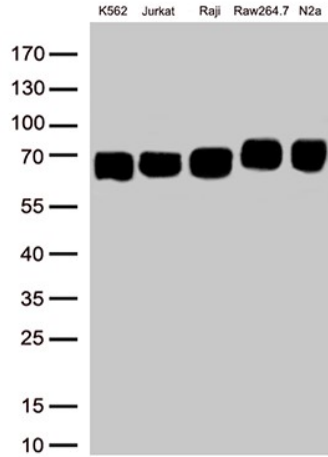
|                         |   |
|-------------------------|---|
| Product Type:           | Primary Antibodies  |
| Clone Name:             | OTI1B4  |
| Applications:           | FC, IF, WB  |
| Recommended Dilution:   | WB 1:500~2000, FLOW 1:100   |
| Reactivity:             | Human, Mouse, Rat   |
| Host:                   | Mouse   |
| Isotype:                | IgG1  |
| Clonality:              | Monoclonal  |
| Immunogen:              | Full length human recombinant protein of human KEAP1(NP_987096) produced in HEK293T cell.   |
| Formulation:            | PBS (pH 7.3) containing 1% BSA, 50% glycerol and 0.02% sodium azide.  |
| Concentration:          | 1 mg/ml   |
| Purification:           | Purified from mouse ascites fluids or tissue culture supernatant by affinity chromatography (protein A/G)   |
| Conjugation:            | Unconjugated  |
| Storage:                | Store at -20°C as received.   |
| Stability:              | Stable for 12 months from date of receipt.  |
| Predicted Protein Size: | 69.5 kDa  |
| Gene Name:              | kelch like ECH associated protein 1   |
| Database Link:          | <a href="#">NP_987096</a><br><a href="#">Entrez Gene 50868 Mouse</a> <a href="#">Entrez Gene 117519 Rat</a> <a href="#">Entrez Gene 9817 Human</a><br><a href="#">Q14145</a>  |
| Background:             | This gene encodes a protein containing KELCH-1 like domains, as well as a BTB/POZ domain. Kelch-like ECH-associated protein 1 interacts with NF-E2-related factor 2 in a redox-sensitive manner and the dissociation of the proteins in the cytoplasm is followed by transportation of NF-E2-related factor 2 to the nucleus. This interaction results in the expression of the catalytic subunit of gamma-glutamylcysteine synthetase. Two alternatively spliced transcript variants encoding the same isoform have been found for this gene. [provided by RefSeq] |



[View online »](#)

**Synonyms:** INrf2; KLHL19  
**Protein Families:** Transcription Factors  
**Protein Pathways:** Ubiquitin mediated proteolysis

**Product images:**



Western blot analysis of extracts (50ug per lane) from 5 different cell lines lysates by using anti-KEAP1 monoclonal antibody(TA502059, 1:500).

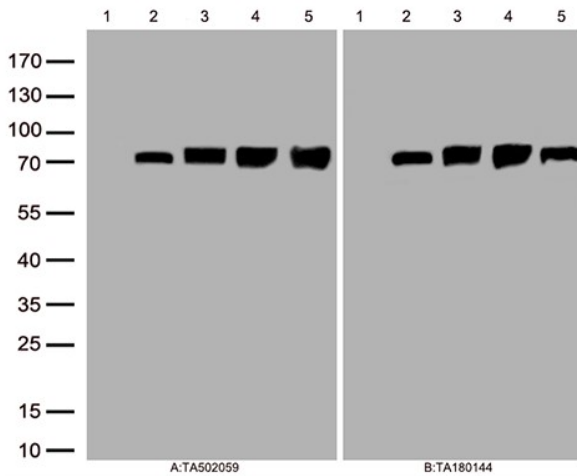


Figure A, Western blot analysis of overexpressed lysates(25ug per lane) from HEK293T cells transfected with empty plasmid ([PS100001], lane 1) , human KEAP1 plasmid ([RC202189], lane 2), mouse KEAP1 plasmid transcript variant 2 ([MR225867], lane 3), mouse KEAP1 plasmid transcript variant 4([MR209525], lane 4), rat KEAP1 plasmid ([RR201988], lane 5) using anti-KEAP1 antibody TA502059 (1:500). Figure B, Western blot analysis of the same samples as figure A with anti-DDK antibody ([TA180144], 1:1000)