

Product datasheet for **TA502051**

FKBPL Mouse Monoclonal Antibody [Clone ID: OTI4G1]

Product data:

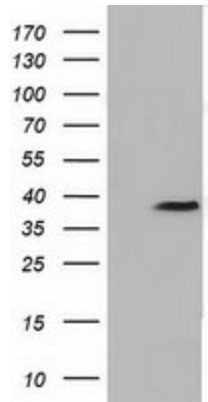
| | |
|-------------------------|--|
| Product Type: | Primary Antibodies |
| Clone Name: | OTI4G1 |
| Applications: | FC, IF, WB |
| Recommended Dilution: | WB: 1:200 - 1:1000, IF 1:100, FLOW 1:100 |
| Reactivity: | Human |
| Host: | Mouse |
| Isotype: | IgG1 |
| Clonality: | Monoclonal |
| Immunogen: | Full length human recombinant protein of human FKBPL (NP_071393) produced in HEK293T cell. |
| Formulation: | PBS (pH 7.3) containing 1% BSA, 50% glycerol and 0.02% sodium azide. |
| Concentration: | Lot dependent |
| Purification: | Purified from mouse ascites fluids or tissue culture supernatant by affinity chromatography (protein A/G) |
| Conjugation: | Unconjugated |
| Storage: | Store at -20°C as received. |
| Stability: | Stable for 12 months from date of receipt. |
| Predicted Protein Size: | 38.0 kDa |
| Gene Name: | FKBP prolyl isomerase like |
| Database Link: | NP_071393 Entrez Gene 63943 Human Q9UIM3 |
| Background: | The protein encoded by this gene has similarity to the immunophilin protein family, which play a role in immunoregulation and basic cellular processes involving protein folding and trafficking. The encoded protein is thought to have a potential role in the induced radioresistance. Also it appears to have some involvement in the control of the cell cycle. [provided by RefSeq]. COMPLETENESS: complete on the 3' end. |



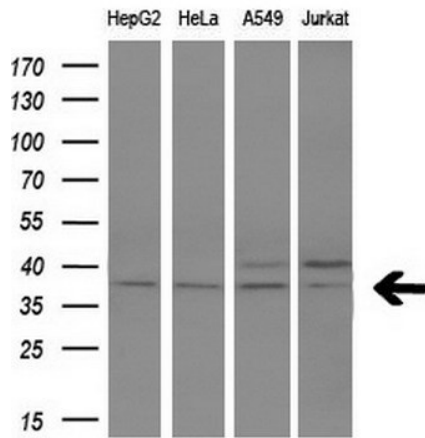
[View online »](#)

Synonyms: DIR1; NG7; WISP39

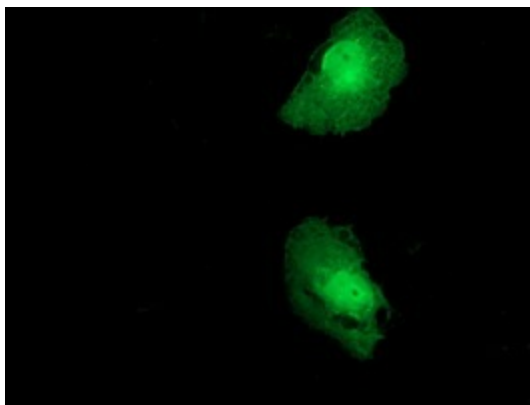
Product images:



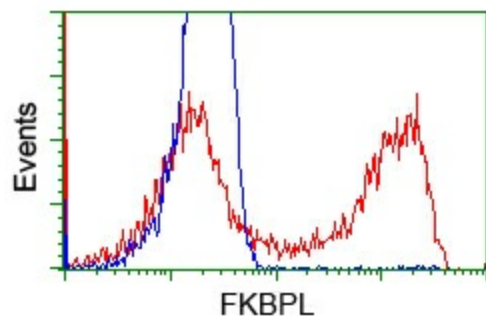
HEK293T cells were transfected with the pCMV6-ENTRY control (Left lane) or pCMV6-ENTRY FKBPL ([RC202153], Right lane) cDNA for 48 hrs and lysed. Equivalent amounts of cell lysates (5 ug per lane) were separated by SDS-PAGE and immunoblotted with anti-FKBPL. Positive lysates [LY411782] (100ug) and [LC411782] (20ug) can be purchased separately from OriGene.



Western blot analysis of extracts (10ug) from 4 different cell lines by using anti-FKBPL monoclonal antibody (1:200).



Anti-FKBPL mouse monoclonal antibody (TA502051) immunofluorescent staining of COS7 cells transiently transfected by pCMV6-ENTRY FKBPL ([RC202153]).



HEK293T cells transfected with either [RC202153] overexpress plasmid (Red) or empty vector control plasmid (Blue) were immunostained by anti-FKBPL antibody (TA502051), and then analyzed by flow cytometry.