

Product datasheet for **TA502047**

Syntrophin alpha 1 (SNTA1) Mouse Monoclonal Antibody [Clone ID: OTI1C7]

Product data:

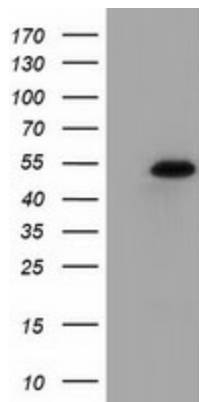
| | |
|-------------------------|--|
| Product Type: | Primary Antibodies |
| Clone Name: | OTI1C7 |
| Applications: | FC, WB |
| Recommended Dilution: | WB 1:2000, FLOW 1:100 |
| Reactivity: | Human, Mouse, Rat |
| Host: | Mouse |
| Isotype: | IgG1 |
| Clonality: | Monoclonal |
| Immunogen: | Full length human recombinant protein of human SNTA1 (NP_003089) produced in HEK293T cell. |
| Formulation: | PBS (pH 7.3) containing 1% BSA, 50% glycerol and 0.02% sodium azide. |
| Concentration: | 0.62 mg/ml |
| Purification: | Purified from mouse ascites fluids or tissue culture supernatant by affinity chromatography (protein A/G) |
| Conjugation: | Unconjugated |
| Storage: | Store at -20°C as received. |
| Stability: | Stable for 12 months from date of receipt. |
| Predicted Protein Size: | 53.7 kDa |
| Gene Name: | syntrophin alpha 1 |
| Database Link: | NP_003089 Entrez Gene 20648 Mouse Entrez Gene 362242 Rat Entrez Gene 6640 Human Q13424 |
| Background: | Dystrophin is a large, rod-like cytoskeletal protein found at the inner surface of muscle fibers. Dystrophin is missing in Duchenne Muscular Dystrophy patients and is present in reduced amounts in Becker Muscular Dystrophy patients. The protein encoded by this gene is a peripheral membrane protein found associated with dystrophin and dystrophin-related proteins. This gene is a member of the syntrophin gene family, which contains at least two other structurally-related genes. [provided by RefSeq] |



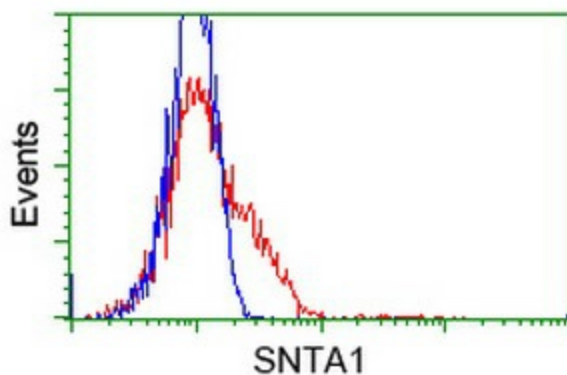
[View online »](#)

Synonyms: dj1187J4.5; LQT12; SNT1; TACIP1

Product images:



HEK293T cells were transfected with the pCMV6-ENTRY control (Left lane) or pCMV6-ENTRY SNTA1 ([RC204480], Right lane) cDNA for 48 hrs and lysed. Equivalent amounts of cell lysates (5 ug per lane) were separated by SDS-PAGE and immunoblotted with anti-SNTA1. Positive lysates [LY401080] (100ug) and [LC401080] (20ug) can be purchased separately from OriGene.



HEK293T cells transfected with either [RC204480] overexpress plasmid (Red) or empty vector control plasmid (Blue) were immunostained by anti-SNTA1 antibody (TA502047), and then analyzed by flow cytometry.