

## Product datasheet for **TA502040M**

### Syntrophin alpha 1 (SNTA1) Mouse Monoclonal Antibody [Clone ID: OTI2E12]

#### Product data:

Product Type:	Primary Antibodies
Clone Name:	OTI2E12
Applications:	FC, IF, WB
Recommended Dilution:	WB 1:500~2000, IF 1:100, FLOW 1:100
Reactivity:	Human, Dog, Rat, Monkey, Mouse
Host:	Mouse
Isotype:	IgG2b
Clonality:	Monoclonal
Immunogen:	Full length human recombinant protein of human SNTA1 (NP_003089) produced in HEK293T cell.
Formulation:	PBS (pH 7.3) containing 1% BSA, 50% glycerol and 0.02% sodium azide.
Concentration:	0.86 mg/ml
Purification:	Purified from mouse ascites fluids or tissue culture supernatant by affinity chromatography (protein A/G)
Conjugation:	Unconjugated
Storage:	Store at -20°C as received.
Stability:	Stable for 12 months from date of receipt.
Predicted Protein Size:	53.7 kDa
Gene Name:	syntrophin alpha 1
Database Link:	<a href="#">NP_003089</a> <a href="#">Entrez Gene 20648 Mouse</a> <a href="#">Entrez Gene 362242 Rat</a> <a href="#">Entrez Gene 485837 Dog</a> <a href="#">Entrez Gene 709824 Monkey</a> <a href="#">Entrez Gene 6640 Human</a> <a href="#">Q13424</a>



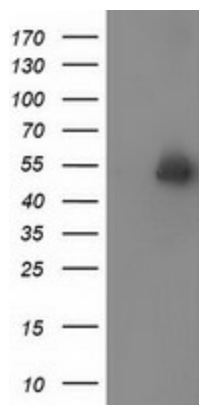
[View online »](#)

**Background:**

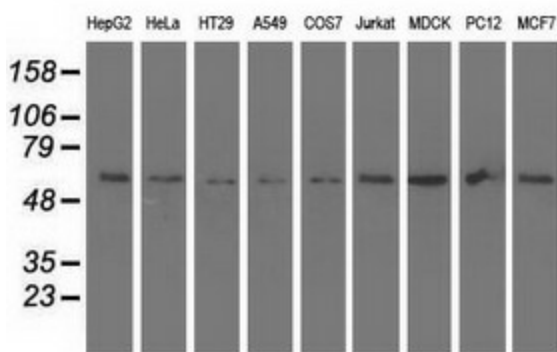
Dystrophin is a large, rod-like cytoskeletal protein found at the inner surface of muscle fibers. Dystrophin is missing in Duchenne Muscular Dystrophy patients and is present in reduced amounts in Becker Muscular Dystrophy patients. The protein encoded by this gene is a peripheral membrane protein found associated with dystrophin and dystrophin-related proteins. This gene is a member of the syntrophin gene family, which contains at least two other structurally-related genes. [provided by RefSeq]

**Synonyms:**

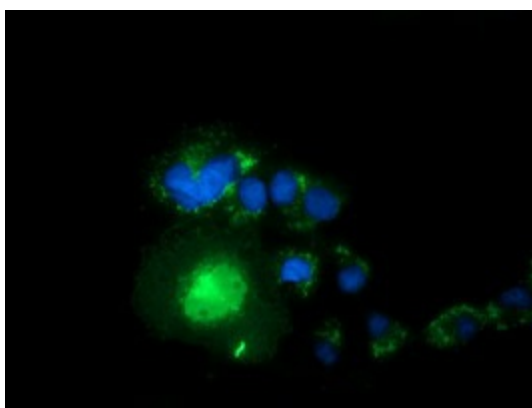
dj1187J4.5; LQT12; SNT1; TACIP1

**Product images:**


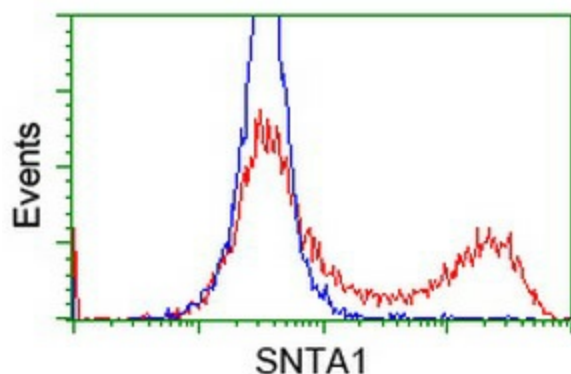
HEK293T cells were transfected with the pCMV6-ENTRY control (Left lane) or pCMV6-ENTRY SNTA1 ([RC204480], Right lane) cDNA for 48 hrs and lysed. Equivalent amounts of cell lysates (5 ug per lane) were separated by SDS-PAGE and immunoblotted with anti-SNTA1. Positive lysates [LY401080] (100ug) and [LC401080] (20ug) can be purchased separately from OriGene.



Western blot analysis of extracts (35ug) from 9 different cell lines by using anti-SNTA1 monoclonal antibody.



Anti-SNTA1 mouse monoclonal antibody ([TA502040]) immunofluorescent staining of COS7 cells transiently transfected by pCMV6-ENTRY SNTA1 ([RC204480]).



HEK293T cells transfected with either [RC204480] overexpress plasmid (Red) or empty vector control plasmid (Blue) were immunostained by anti-SNTA1 antibody ([TA502040]), and then analyzed by flow cytometry.