

Product datasheet for **TA502037AM**

PANK3 Mouse Monoclonal Antibody (Biotin conjugated) [Clone ID: OTI3C4]

Product data:

Product Type:	Primary Antibodies
Clone Name:	OTI3C4
Applications:	FC, WB
Recommended Dilution:	WB 1:500, FLOW 1:100
Reactivity:	Human, Mouse, Rat
Host:	Mouse
Isotype:	IgG1
Clonality:	Monoclonal
Immunogen:	Full length human recombinant protein of human PANK3 (NP_078870) produced in HEK293T cell.
Formulation:	PBS (pH 7.3) containing 1% BSA, 50% glycerol and 0.02% sodium azide.
Concentration:	0.5 mg/ml
Purification:	Purified from mouse ascites fluids or tissue culture supernatant by affinity chromatography (protein A/G)
Conjugation:	Biotin
Storage:	Store at -20°C as received.
Stability:	Stable for 12 months from date of receipt.
Predicted Protein Size:	40.9 kDa
Gene Name:	pantothenate kinase 3
Database Link:	NP_078870 Entrez Gene 79646 Human Q9H999
Background:	This gene encodes a protein belonging to the pantothenate kinase family. Pantothenate kinase is a key regulatory enzyme in the biosynthesis of coenzyme A (CoA) in bacteria and mammalian cells. It catalyzes the first committed step in the universal biosynthetic pathway leading to CoA and is itself subject to regulation through feedback inhibition by CoA. This family member is expressed most abundantly in the liver. [provided by RefSeq]. COMPLETENESS: complete on the 3' end.



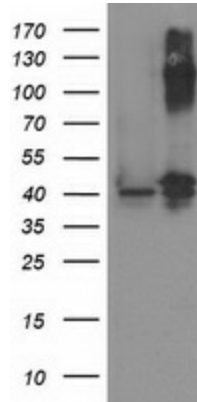
[View online »](#)

Synonyms: DKFZp686O22247; FLJ12899; MGC16863

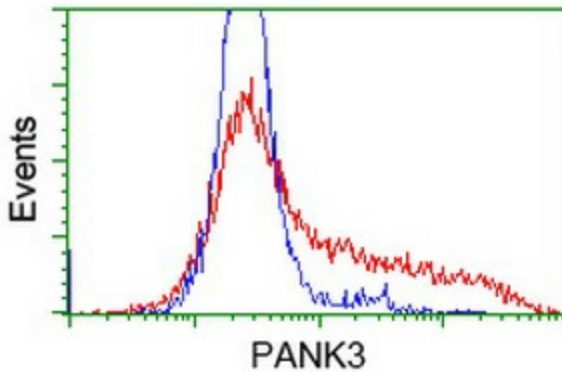
Protein Families: Druggable Genome

Protein Pathways: Metabolic pathways, Pantothenate and CoA biosynthesis

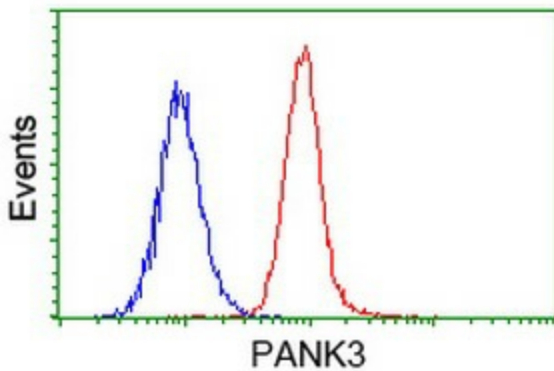
Product images:



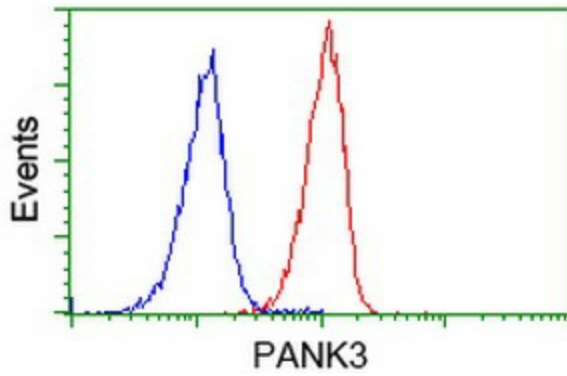
HEK293T cells were transfected with the pCMV6-ENTRY control (Cat# [PS100001], Left lane) or pCMV6-ENTRY PANK3 (Cat# [RC203696], Right lane) cDNA for 48 hrs and lysed. Equivalent amounts of cell lysates (5 ug per lane) were separated by SDS-PAGE and immunoblotted with anti-PANK3(Cat# [TA502037]). Positive lysates [LY411210] (100ug) and [LC411210] (20ug) can be purchased separately from OriGene.



HEK293T cells transfected with either [RC203696] overexpress plasmid (Red) or empty vector control plasmid (Blue) were immunostained by anti-PANK3 antibody ([TA502037]), and then analyzed by flow cytometry.



Flow cytometric Analysis of HeLa cells, using anti-PANK3 antibody ([TA502037]), (Red), compared to a nonspecific negative control antibody (TA50011), (Blue).



Flow cytometric Analysis of Jurkat cells, using anti-PANK3 antibody ([TA502037]), (Red), compared to a nonspecific negative control antibody (TA50011), (Blue).