

Product datasheet for **TA502030**

HDAC6 Mouse Monoclonal Antibody [Clone ID: OTI4C5]

Product data:

Product Type:	Primary Antibodies
Clone Name:	OTI4C5
Applications:	FC, IF, IHC, WB
Recommended Dilution:	WB 1:1000~2000, IF 1:100, FLOW 1:100, IHC 1:150
Reactivity:	Human, Dog, Rat, Monkey
Host:	Mouse
Isotype:	IgG1
Clonality:	Monoclonal
Immunogen:	Full length human recombinant protein of human HDAC6 (NP_006035) produced in HEK293T cell.
Formulation:	PBS (pH 7.3) containing 1% BSA, 50% glycerol and 0.02% sodium azide.
Concentration:	1 mg/ml
Purification:	Purified from mouse ascites fluids or tissue culture supernatant by affinity chromatography (protein A/G)
Conjugation:	Unconjugated
Storage:	Store at -20°C as received.
Stability:	Stable for 12 months from date of receipt.
Predicted Protein Size:	131.2 kDa
Gene Name:	histone deacetylase 6
Database Link:	NP_006035 Entrez Gene 84581 Rat Entrez Gene 480907 Dog Entrez Gene 711363 Monkey Entrez Gene 10013 Human Q9UBN7



[View online »](#)

Background:

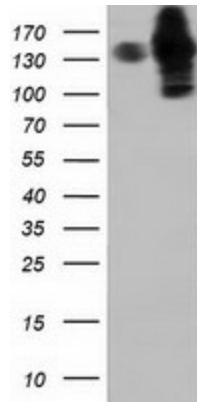
Histones play a critical role in transcriptional regulation, cell cycle progression, and developmental events. Histone acetylation/deacetylation alters chromosome structure and affects transcription factor access to DNA. The protein encoded by this gene belongs to class II of the histone deacetylase/acuc/apha family. It contains an internal duplication of two catalytic domains which appear to function independently of each other. This protein possesses histone deacetylase activity and represses transcription. [provided by RefSeq]

Synonyms:

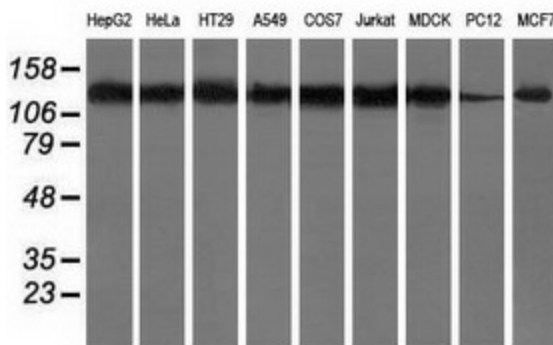
CPBHM; HD6; JM21; PPP1R90

Protein Families:

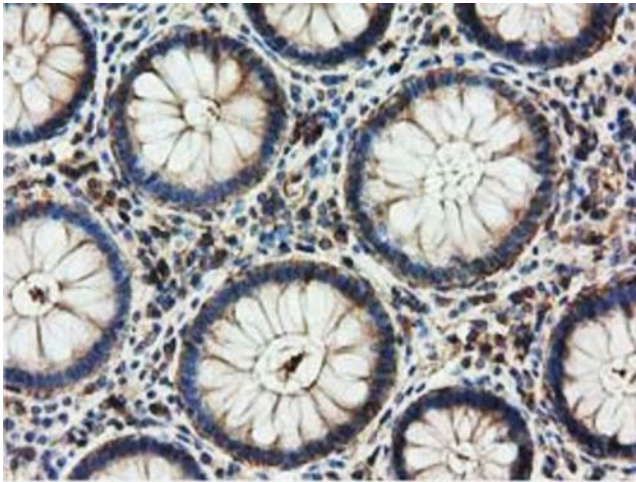
Druggable Genome, Transcription Factors

Product images:


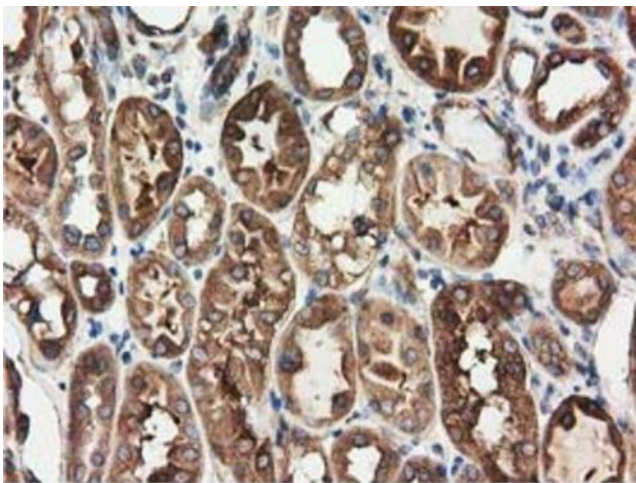
HEK293T cells were transfected with the pCMV6-ENTRY control (Cat# [PS100001], Left lane) or pCMV6-ENTRY HDAC6 (Cat# [RC209649], Right lane) cDNA for 48 hrs and lysed. Equivalent amounts of cell lysates (5 ug per lane) were separated by SDS-PAGE and immunoblotted with anti-HDAC6 (Cat# TA502030). Positive lysates [LY401822] (100ug) and [LC401822] (20ug) can be purchased separately from OriGene.



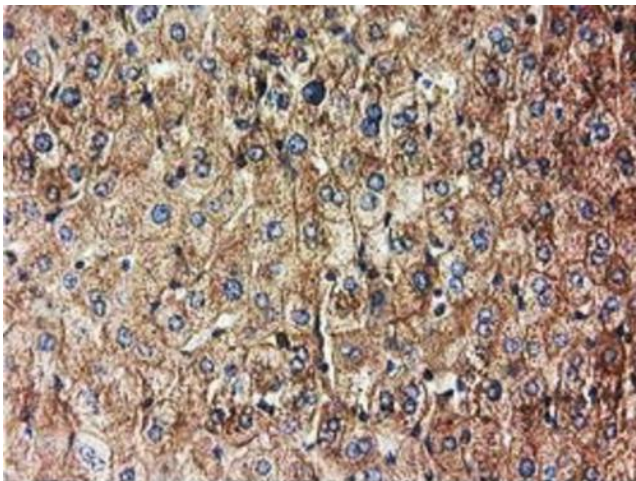
Western blot analysis of extracts (35ug) from 9 different cell lines by using anti-HDAC6 monoclonal antibody.



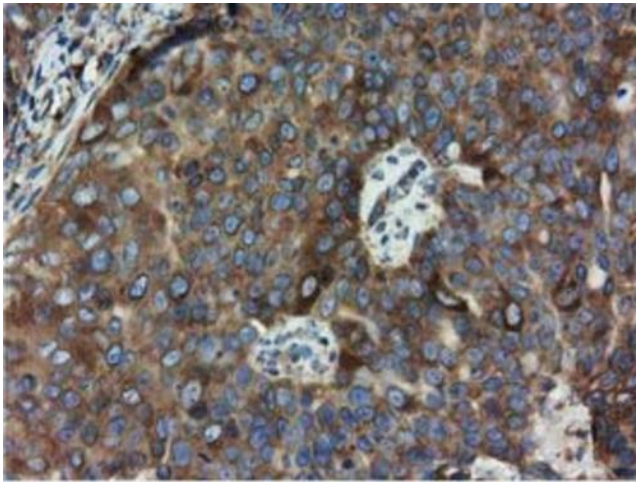
Immunohistochemical staining of paraffin-embedded Human colon tissue within the normal limits using anti-HDAC6 mouse monoclonal antibody (TA502030) at 1:150 dilution. Heat-induced epitope retrieval by EDTA solution buffer pH 8.0 at 120°C for 3 min.



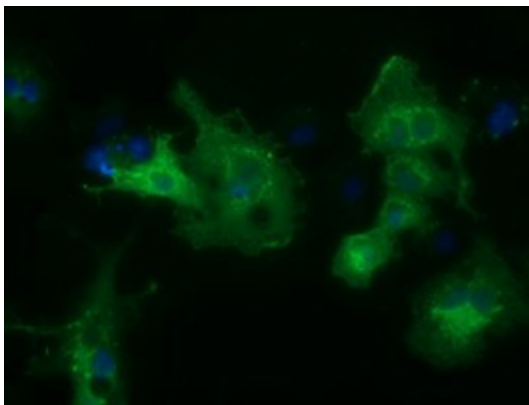
Immunohistochemical staining of paraffin-embedded Human Kidney tissue within the normal limits using anti-HDAC6 mouse monoclonal antibody (TA502030) at 1:150 dilution. Heat-induced epitope retrieval by EDTA solution buffer pH 8.0 at 120°C for 3 min.



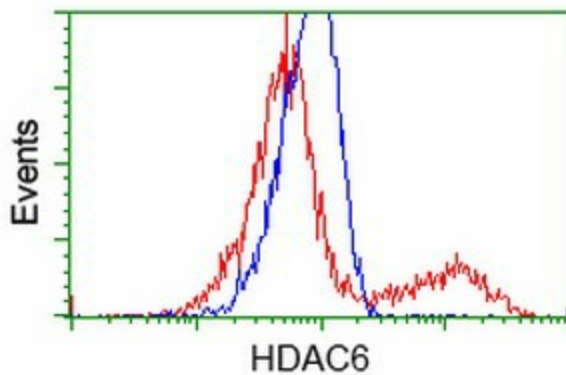
Immunohistochemical staining of paraffin-embedded Human liver tissue within the normal limits using anti-HDAC6 mouse monoclonal antibody (TA502030) at 1:150 dilution. Heat-induced epitope retrieval by EDTA solution buffer pH 8.0 at 120°C for 3 min.



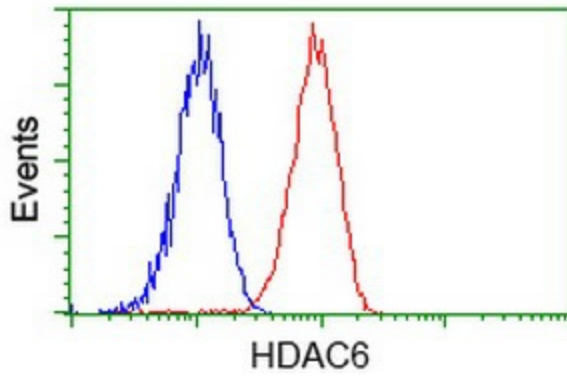
Immunohistochemical staining of paraffin-embedded Adenocarcinoma of Human ovary tissue using anti-HDAC6 mouse monoclonal antibody (TA502030) at 1:150 dilution. Heat-induced epitope retrieval by EDTA solution buffer pH 8.0 at 120°C for 3 min.



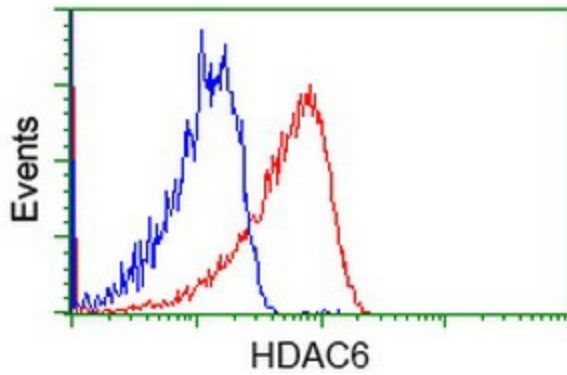
Anti-HDAC6 mouse monoclonal antibody (TA502030) immunofluorescent staining of COS7 cells transiently transfected by pCMV6-ENTRY HDAC6 ([RC209649]).



HEK293T cells transfected with either [RC209649] overexpress plasmid (Red) or empty vector control plasmid (Blue) were immunostained by anti-HDAC6 antibody (TA502030), and then analyzed by flow cytometry.



Flow cytometric Analysis of HeLa cells, using anti-HDAC6 antibody (TA502030), (Red), compared to a nonspecific negative control antibody (TA50011), (Blue).



Flow cytometric Analysis of Jurkat cells, using anti-HDAC6 antibody (TA502030), (Red), compared to a nonspecific negative control antibody (TA50011), (Blue).