

Product datasheet for **TA502029AM**

SPR Mouse Monoclonal Antibody (Biotin conjugated) [Clone ID: OTI3E3]

Product data:

Product Type:	Primary Antibodies
Clone Name:	OTI3E3
Applications:	FC, IF, WB
Recommended Dilution:	WB 1:2000, IF 1:100, FLOW 1:100
Reactivity:	Human
Host:	Mouse
Isotype:	IgG1
Clonality:	Monoclonal
Immunogen:	Full length human recombinant protein of human SPR (NP_003115) produced in HEK293T cell.
Formulation:	PBS (pH 7.3) containing 1% BSA, 50% glycerol and 0.02% sodium azide.
Concentration:	0.5 mg/ml
Purification:	Purified from mouse ascites fluids or tissue culture supernatant by affinity chromatography (protein A/G)
Conjugation:	Biotin
Storage:	Store at -20°C as received.
Stability:	Stable for 12 months from date of receipt.
Predicted Protein Size:	27.9 kDa
Gene Name:	sepiapterin reductase
Database Link:	NP_003115 Entrez Gene 6697 Human P35270
Background:	This gene encodes an aldo-keto reductase that catalyzes the NADPH-dependent reduction of pteridine derivatives and is important in the biosynthesis of tetrahydrobiopterin (BH4). Mutations in this gene result in DOPA-responsive dystonia due to sepiapterin reductase deficiency. A pseudogene has been identified on chromosome 1. [provided by RefSeq]
Synonyms:	SDR38C1

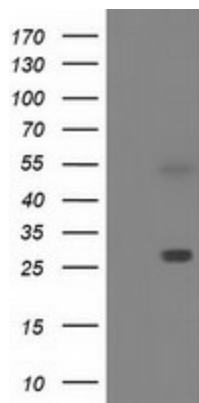


[View online »](#)

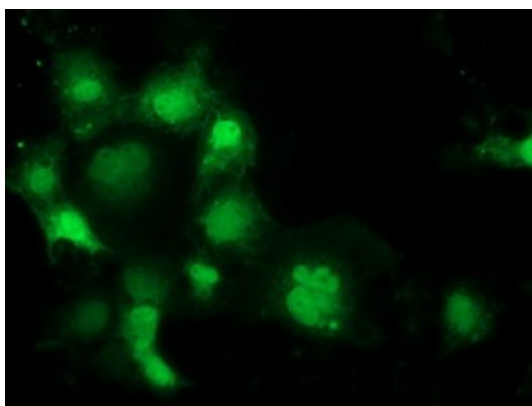
Protein Families: Druggable Genome

Protein Pathways: Folate biosynthesis, Metabolic pathways

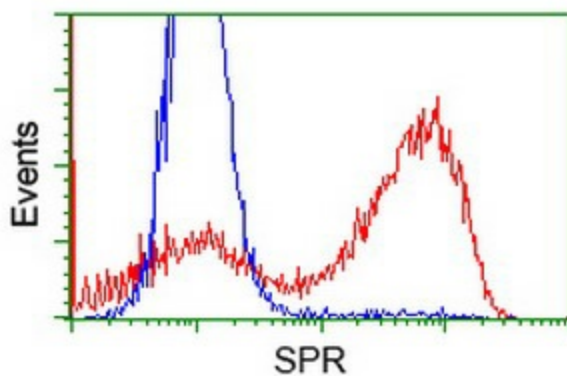
Product images:



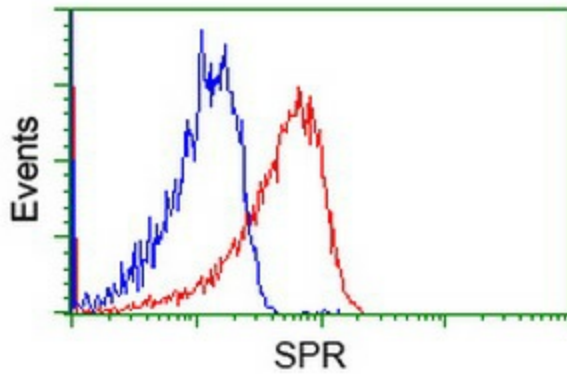
HEK293T cells were transfected with the pCMV6-ENTRY control (Left lane) or pCMV6-ENTRY SPR ([RC205679], Right lane) cDNA for 48 hrs and lysed. Equivalent amounts of cell lysates (5 ug per lane) were separated by SDS-PAGE and immunoblotted with anti-SPR. Positive lysates [LY401086] (100ug) and [LC401086] (20ug) can be purchased separately from OriGene.



Anti-SPR mouse monoclonal antibody ([TA502029]) immunofluorescent staining of COS7 cells transiently transfected by pCMV6-ENTRY SPR ([RC205679]).



HEK293T cells transfected with either [RC205679] overexpress plasmid (Red) or empty vector control plasmid (Blue) were immunostained by anti-SPR antibody ([TA502029]), and then analyzed by flow cytometry.



Flow cytometric Analysis of HeLa cells, using anti-SPR antibody ([TA502029]), (Red), compared to a nonspecific negative control antibody (TA50011), (Blue).