

## Product datasheet for **TA502027AM**

### TTL Mouse Monoclonal Antibody (Biotin conjugated) [Clone ID: OTI3G5]

#### Product data:

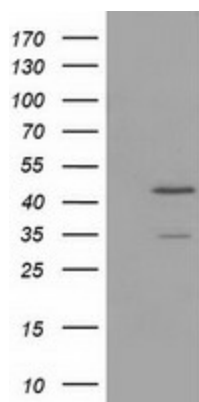
Product Type:	Primary Antibodies
Clone Name:	OTI3G5
Applications:	WB
Recommended Dilution:	WB 1:500
Reactivity:	Human, Mouse, Rat
Host:	Mouse
Isotype:	IgG1
Clonality:	Monoclonal
Immunogen:	Full length human recombinant protein of human TTL (NP_714923) produced in HEK293T cell.
Formulation:	PBS (pH 7.3) containing 1% BSA, 50% glycerol and 0.02% sodium azide.
Concentration:	0.5 mg/ml
Purification:	Purified from mouse ascites fluids or tissue culture supernatant by affinity chromatography (protein A/G)
Conjugation:	Biotin
Storage:	Store at -20°C as received.
Stability:	Stable for 12 months from date of receipt.
Predicted Protein Size:	43.0 kDa
Gene Name:	tubulin tyrosine ligase
Database Link:	<a href="#">NP_714923</a> <a href="#">Entrez Gene 69737 Mouse</a> <a href="#">Entrez Gene 171572 Rat</a> <a href="#">Entrez Gene 150465 Human</a> <a href="#">Q8NG68</a>
Background:	TTL is a cytosolic enzyme involved in the posttranslational modification of alpha-tubulin (see MIM 602529). Alpha-tubulin within assembled microtubules is detyrosinated over time at the C terminus. After microtubule disassembly, TTL restores the tyrosine residues and consequently participates in a cycle of tubulin detyrosination and tyrosination (Erck et al., 2003 [PubMed 14571137]). [supplied by OMIM]. COMPLETENESS: complete on the 3' end.



[View online »](#)

Synonyms: MGC46235

### Product images:



HEK293T cells were transfected with the pCMV6-ENTRY control (Cat# [PS100001], Left lane) or pCMV6-ENTRY TTL (Cat# [RC207805], Right lane) cDNA for 48 hrs and lysed. Equivalent amounts of cell lysates (5 ug per lane) were separated by SDS-PAGE and immunoblotted with anti-TTL (Cat# [TA502027]). Positive lysates [LY403517] (100ug) and [LC403517] (20ug) can be purchased separately from OriGene.