

## Product datasheet for **TA502025M**

### **SAMHD1 Mouse Monoclonal Antibody [Clone ID: OTI3G6]**

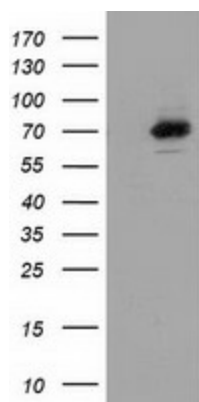
#### **Product data:**

Product Type:	Primary Antibodies
Clone Name:	OTI3G6
Applications:	FC, IF, WB
Recommended Dilution:	WB 1:500~2000, IF 1:100, FLOW 1:100
Reactivity:	Human, Monkey
Host:	Mouse
Isotype:	IgG2b
Clonality:	Monoclonal
Immunogen:	Full length human recombinant protein of human SAMHD1 (NP_056289) produced in HEK293T cell.
Formulation:	PBS (pH 7.3) containing 1% BSA, 50% glycerol and 0.02% sodium azide.
Concentration:	0.43 mg/ml
Purification:	Purified from mouse ascites fluids or tissue culture supernatant by affinity chromatography (protein A/G)
Conjugation:	Unconjugated
Storage:	Store at -20°C as received.
Stability:	Stable for 12 months from date of receipt.
Predicted Protein Size:	72 kDa
Gene Name:	SAM and HD domain containing deoxynucleoside triphosphate triphosphohydrolase 1
Database Link:	<a href="#">NP_056289</a> <a href="#">Entrez Gene 709060 Monkey</a> <a href="#">Entrez Gene 25939 Human</a> <a href="#">Q9Y3Z3</a>
Background:	This gene may play a role in regulation of the innate immune response. The encoded protein is upregulated in response to viral infection and may be involved in mediation of tumor necrosis factor-alpha proinflammatory responses. Mutations in this gene have been associated with Aicardi-Goutieres syndrome. [provided by RefSeq]. COMPLETENESS: complete on the 3' end.

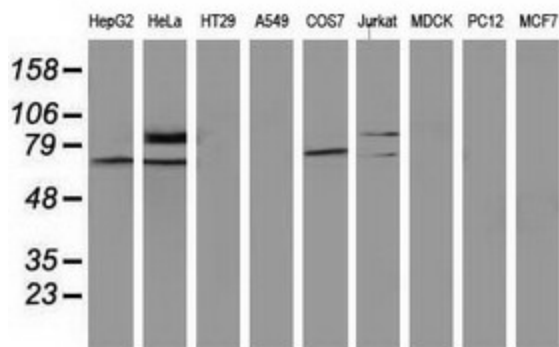

[View online »](#)

**Synonyms:** CHBL2; DCIP; HDDC1; MOP-5; SBB188

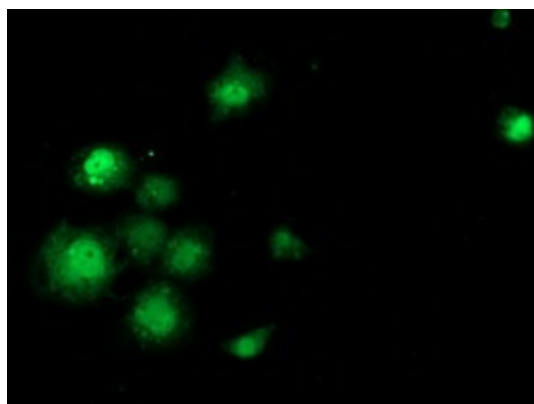
**Product images:**



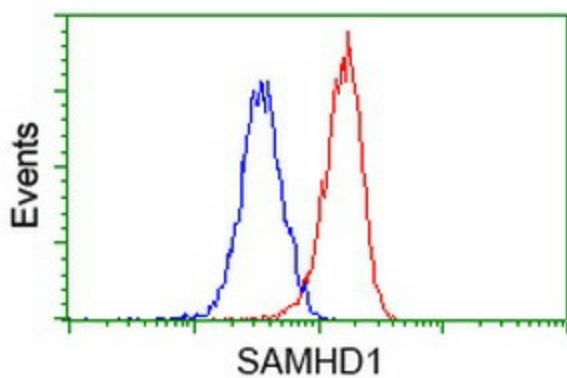
HEK293T cells were transfected with the pCMV6-ENTRY control (Left lane) or pCMV6-ENTRY SAMHD1 ([RC206013], Right lane) cDNA for 48 hrs and lysed. Equivalent amounts of cell lysates (5 ug per lane) were separated by SDS-PAGE and immunoblotted with anti-SAMHD1. Positive lysates [LY414526] (100ug) and [LC414526] (20ug) can be purchased separately from OriGene.



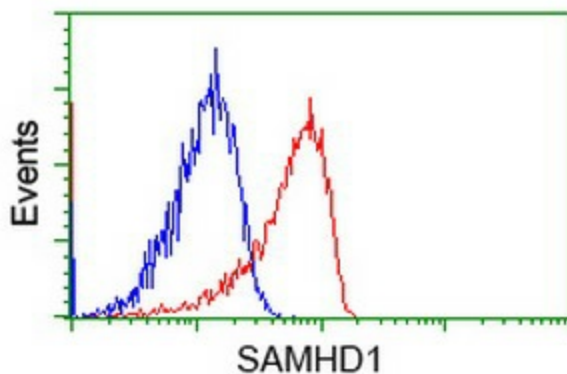
Western blot analysis of extracts (35ug) from 9 different cell lines by using anti-SAMHD1 monoclonal antibody.



Anti-SAMHD1 mouse monoclonal antibody ([TA502025]) immunofluorescent staining of COS7 cells transiently transfected by pCMV6-ENTRY SAMHD1 ([RC206013]).



Flow cytometric Analysis of HeLa cells, using anti-SAMHD1 antibody ([TA502025]), (Red), compared to a nonspecific negative control antibody (TA50011), (Blue).



Flow cytometric Analysis of Jurkat cells, using anti-SAMHD1 antibody ([TA502025]), (Red), compared to a nonspecific negative control antibody (TA50011), (Blue).