

Product datasheet for **TA502021M**

RABL2A Mouse Monoclonal Antibody [Clone ID: OTI1A12]

Product data:

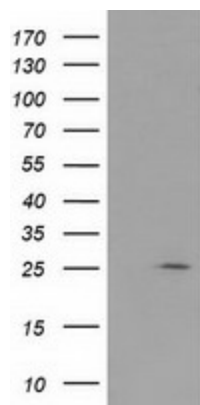
Product Type:	Primary Antibodies
Clone Name:	OTI1A12
Applications:	FC, WB
Recommended Dilution:	WB 1:2000, FLOW 1:100
Reactivity:	Human, Rat
Host:	Mouse
Isotype:	IgG1
Clonality:	Monoclonal
Immunogen:	Full length human recombinant protein of human RABL2A (NP_009013) produced in HEK293T cell.
Formulation:	PBS (pH 7.3) containing 1% BSA, 50% glycerol and 0.02% sodium azide.
Concentration:	0.43 mg/ml
Purification:	Purified from mouse ascites fluids or tissue culture supernatant by affinity chromatography (protein A/G)
Conjugation:	Unconjugated
Storage:	Store at -20°C as received.
Stability:	Stable for 12 months from date of receipt.
Predicted Protein Size:	25.9 kDa
Gene Name:	RAB, member of RAS oncogene family like 2A
Database Link:	NP_009013 Entrez Gene 362987 Rat Entrez Gene 11159 Human Q9UBK7
Background:	This gene is a member of the RAB gene family which belongs to the RAS GTPase superfamily. The proteins in the family of RAS-related signaling molecules are small GTP-binding proteins that play important roles in the regulation of exocytotic and endocytotic pathways. This gene maps to the site of an ancestral telomere fusion event and may be a subtelomeric gene. Two alternatively spliced transcript variants have been identified, both encoding the same protein. [provided by RefSeq]


[View online »](#)

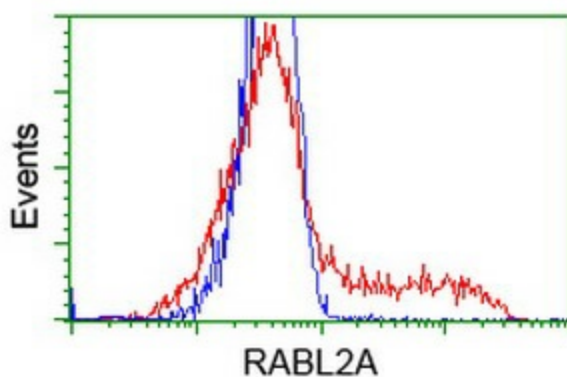
Synonyms: FLJ78724; MGC117180

Protein Families: Druggable Genome

Product images:



HEK293T cells were transfected with the pCMV6-ENTRY control (Left lane) or pCMV6-ENTRY RABL2A ([RC211854], Right lane) cDNA for 48 hrs and lysed. Equivalent amounts of cell lysates (5 ug per lane) were separated by SDS-PAGE and immunoblotted with anti-RABL2A. Positive lysates [LY416219] (100ug) and [LC416219] (20ug) can be purchased separately from OriGene.



HEK293T cells transfected with either [RC211854] overexpress plasmid (Red) or empty vector control plasmid (Blue) were immunostained by anti-RABL2A antibody ([TA502021]), and then analyzed by flow cytometry.