

Product datasheet for **TA502019BM**

RABL2A Mouse Monoclonal Antibody (HRP conjugated) [Clone ID: OTI4A3]

Product data:

Product Type:	Primary Antibodies
Clone Name:	OTI4A3
Applications:	IHC, WB
Recommended Dilution:	WB 1:2000, IHC 1:150
Reactivity:	Human, Rat
Host:	Mouse
Isotype:	IgG2a
Clonality:	Monoclonal
Immunogen:	Full length human recombinant protein of human RABL2A(NP_009013) produced in HEK293T cell.
Formulation:	PBS (pH 7.3) containing 1% BSA, 50% glycerol.
Concentration:	0.5 mg/ml
Purification:	Purified from mouse ascites fluids or tissue culture supernatant by affinity chromatography (protein A/G)
Conjugation:	HRP
Storage:	Store at -20°C as received.
Stability:	Stable for 12 months from date of receipt.
Predicted Protein Size:	25.9 kDa
Gene Name:	RAB, member of RAS oncogene family like 2A
Database Link:	NP_009013 Entrez Gene 362987 Rat Entrez Gene 11159 Human Q9UBK7
Background:	This gene is a member of the RAB gene family which belongs to the RAS GTPase superfamily. The proteins in the family of RAS-related signaling molecules are small GTP-binding proteins that play important roles in the regulation of exocytotic and endocytotic pathways. This gene maps to the site of an ancestral telomere fusion event and may be a subtelomeric gene. Two alternatively spliced transcript variants have been identified, both encoding the same protein. [provided by RefSeq]

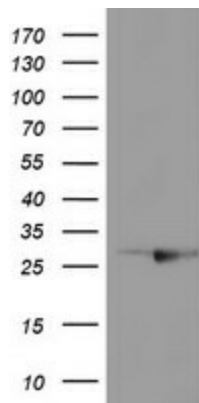


[View online »](#)

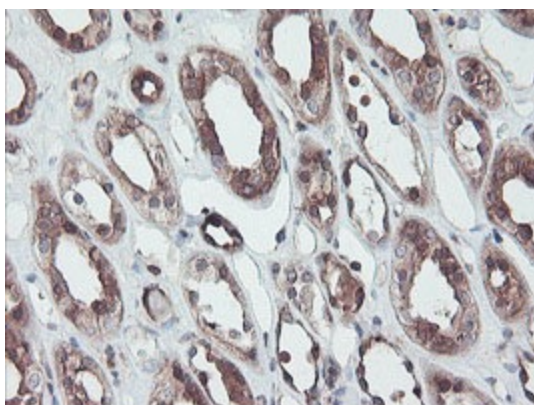
Synonyms: FLJ78724; MGC117180

Protein Families: Druggable Genome

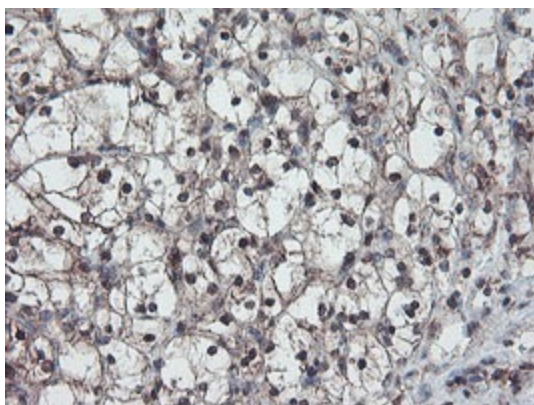
Product images:



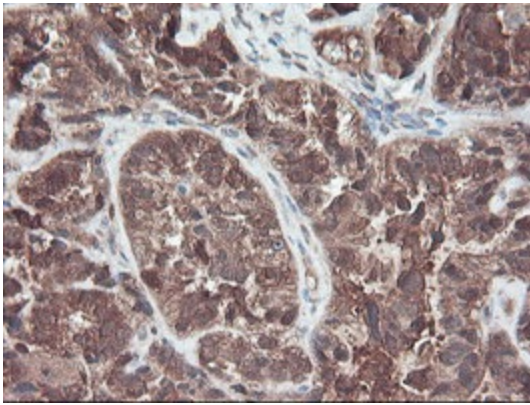
HEK293T cells were transfected with the pCMV6-ENTRY control (Left lane) or pCMV6-ENTRY RABL2A ([RC211854], Right lane) cDNA for 48 hrs and lysed. Equivalent amounts of cell lysates (5 ug per lane) were separated by SDS-PAGE and immunoblotted with anti-RABL2A. Positive lysates [LY416219] (100ug) and [LC416219] (20ug) can be purchased separately from OriGene.



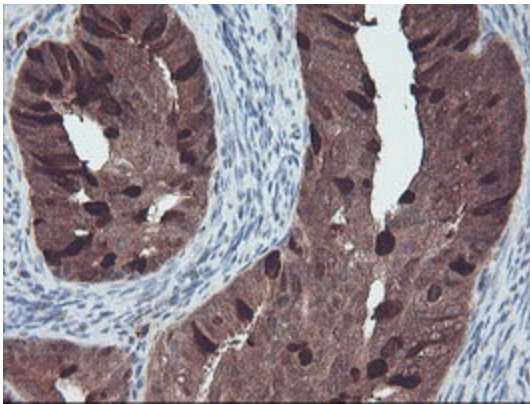
Immunohistochemical staining of paraffin-embedded Human Kidney tissue within the normal limits using anti-RABL2A mouse monoclonal antibody. (Heat-induced epitope retrieval by 10mM citric buffer, pH6.0, 100°C for 10min, [TA502019])



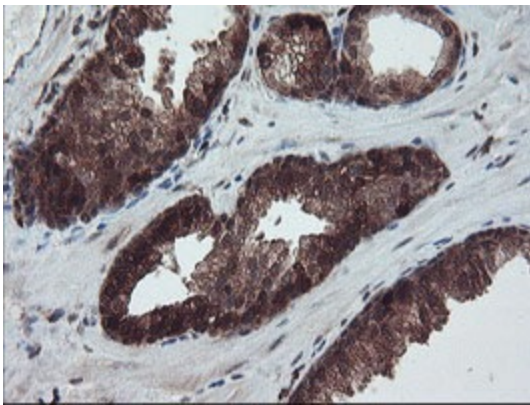
Immunohistochemical staining of paraffin-embedded Carcinoma of Human kidney tissue using anti-RABL2A mouse monoclonal antibody. (Heat-induced epitope retrieval by 10mM citric buffer, pH6.0, 100°C for 10min, [TA502019])



Immunohistochemical staining of paraffin-embedded Adenocarcinoma of Human ovary tissue using anti-RABL2A mouse monoclonal antibody. (Heat-induced epitope retrieval by 10mM citric buffer, pH6.0, 100°C for 10min, [TA502019])



Immunohistochemical staining of paraffin-embedded Adenocarcinoma of Human endometrium tissue using anti-RABL2A mouse monoclonal antibody. (Heat-induced epitope retrieval by 10mM citric buffer, pH6.0, 100°C for 10min, [TA502019])



Immunohistochemical staining of paraffin-embedded Carcinoma of Human prostate tissue using anti-RABL2A mouse monoclonal antibody. (Heat-induced epitope retrieval by 10mM citric buffer, pH6.0, 100°C for 10min, [TA502019])