

## Product datasheet for **TA502018AM**

### **RABL2A Mouse Monoclonal Antibody (Biotin conjugated) [Clone ID: OTI4A8]**

#### **Product data:**

<b>Product Type:</b>	Primary Antibodies
<b>Clone Name:</b>	OTI4A8
<b>Applications:</b>	FC, IF, WB
<b>Recommended Dilution:</b>	WB 1:500~2000, IF 1:100, FLOW 1:100
<b>Reactivity:</b>	Human, Monkey, Rat
<b>Host:</b>	Mouse
<b>Isotype:</b>	IgG1
<b>Clonality:</b>	Monoclonal
<b>Immunogen:</b>	Full length human recombinant protein of human RABL2A (NP_009013) produced in HEK293T cell.
<b>Formulation:</b>	PBS (pH 7.3) containing 1% BSA, 50% glycerol and 0.02% sodium azide.
<b>Concentration:</b>	0.5 mg/ml
<b>Purification:</b>	Purified from mouse ascites fluids or tissue culture supernatant by affinity chromatography (protein A/G)
<b>Conjugation:</b>	Biotin
<b>Storage:</b>	Store at -20°C as received.
<b>Stability:</b>	Stable for 12 months from date of receipt.
<b>Predicted Protein Size:</b>	25.9 kDa
<b>Gene Name:</b>	RAB, member of RAS oncogene family like 2A
<b>Database Link:</b>	<a href="#">NP_009013</a> <a href="#">Entrez Gene 362987 Rat</a> <a href="#">Entrez Gene 11159 Human</a> <a href="#">Q9UBK7</a>
<b>Background:</b>	This gene is a member of the RAB gene family which belongs to the RAS GTPase superfamily. The proteins in the family of RAS-related signaling molecules are small GTP-binding proteins that play important roles in the regulation of exocytotic and endocytotic pathways. This gene maps to the site of an ancestral telomere fusion event and may be a subtelomeric gene. Two alternatively spliced transcript variants have been identified, both encoding the same protein. [provided by RefSeq]

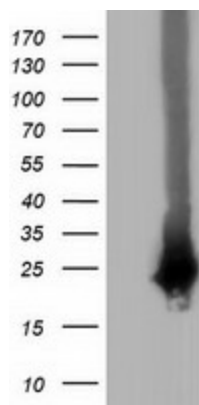


[View online »](#)

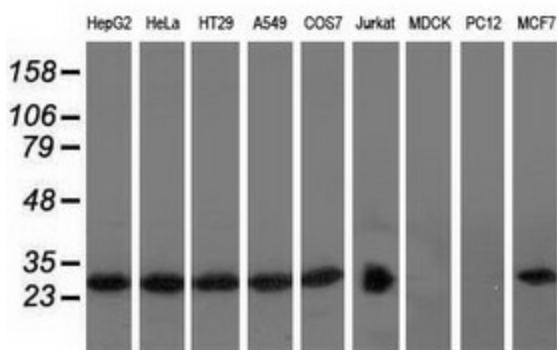
Synonyms: FLJ78724; MGC117180

Protein Families: Druggable Genome

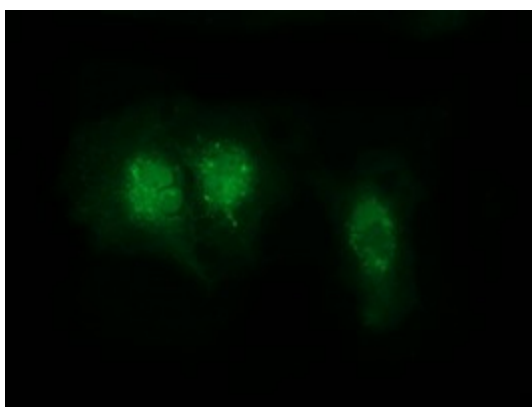
**Product images:**



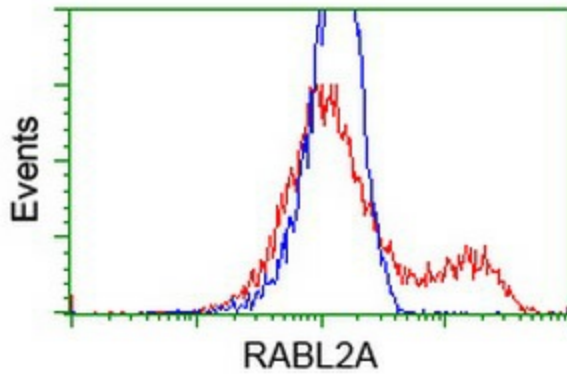
HEK293T cells were transfected with the pCMV6-ENTRY control (Left lane) or pCMV6-ENTRY RABL2A ([RC211854], Right lane) cDNA for 48 hrs and lysed. Equivalent amounts of cell lysates (5 ug per lane) were separated by SDS-PAGE and immunoblotted with anti-RABL2A. Positive lysates [LY416219] (100ug) and [LC416219] (20ug) can be purchased separately from OriGene.



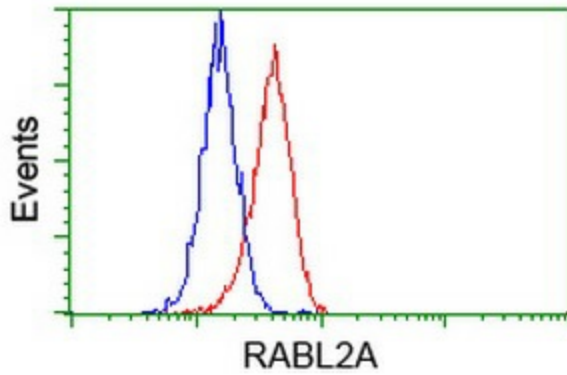
Western blot analysis of extracts (35ug) from 9 different cell lines by using anti-RABL2A monoclonal antibody.



Anti-RABL2A mouse monoclonal antibody ([TA502018]) immunofluorescent staining of COS7 cells transiently transfected by pCMV6-ENTRY RABL2A ([RC211854]).



HEK293T cells transfected with either [RC211854] overexpress plasmid (Red) or empty vector control plasmid (Blue) were immunostained by anti-RABL2A antibody ([TA502018]), and then analyzed by flow cytometry.



Flow cytometric Analysis of HeLa cells, using anti-RABL2A antibody ([TA502018]), (Red), compared to a nonspecific negative control antibody (TA50011), (Blue).