

Product datasheet for **TA502008AM**

XLF (NHEJ1) Mouse Monoclonal Antibody (Biotin conjugated) [Clone ID: OTI1G7]

Product data:

Product Type:	Primary Antibodies
Clone Name:	OTI1G7
Applications:	FC, IF, WB
Recommended Dilution:	WB 1:2000, IF 1:100, FLOW 1:100
Reactivity:	Human
Host:	Mouse
Isotype:	IgG1
Clonality:	Monoclonal
Immunogen:	Full length human recombinant protein of human NHEJ1 (NP_079058) produced in HEK293T cell.
Formulation:	PBS (pH 7.3) containing 1% BSA, 50% glycerol and 0.02% sodium azide.
Concentration:	0.5 mg/ml
Purification:	Purified from mouse ascites fluids or tissue culture supernatant by affinity chromatography (protein A/G)
Conjugation:	Biotin
Storage:	Store at -20°C as received.
Stability:	Stable for 12 months from date of receipt.
Predicted Protein Size:	33.2 kDa
Gene Name:	non-homologous end joining factor 1
Database Link:	NP_079058 Entrez Gene 79840 Human Q9H9Q4
Background:	Double-strand breaks in DNA result from genotoxic stresses and are among the most damaging of DNA lesions. This gene encodes a DNA repair factor essential for the nonhomologous end-joining pathway, which preferentially mediates repair of double-stranded breaks. Mutations in this gene cause different kinds of severe combined immunodeficiency disorders. [provided by RefSeq]

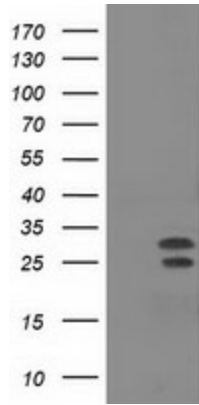


[View online »](#)

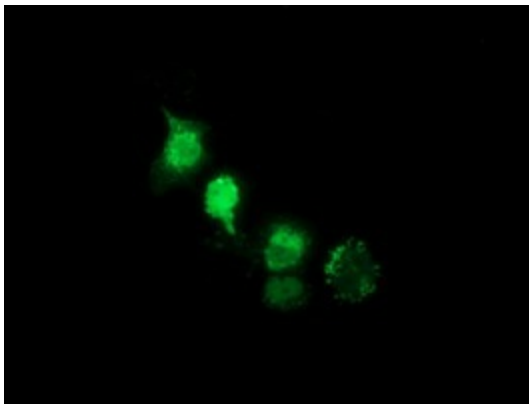
Synonyms: XLF

Protein Pathways: Non-homologous end-joining

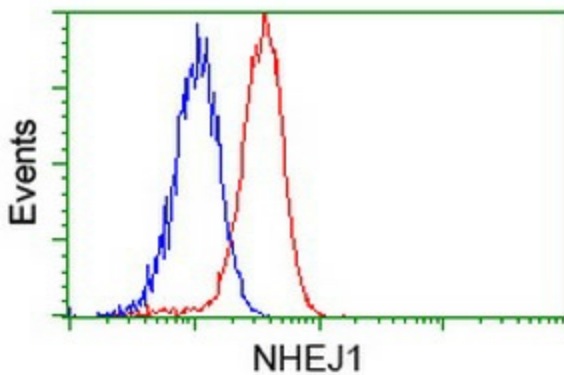
Product images:



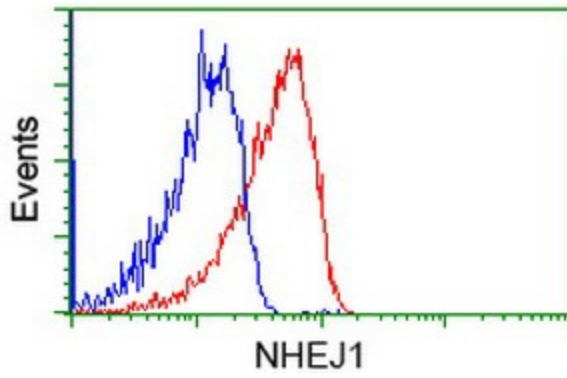
HEK293T cells were transfected with the pCMV6-ENTRY control (Left lane) or pCMV6-ENTRY NHEJ1 ([RC203393], Right lane) cDNA for 48 hrs and lysed. Equivalent amounts of cell lysates (5 ug per lane) were separated by SDS-PAGE and immunoblotted with anti-NHEJ1. Positive lysates [LY403031] (100ug) and [LC403031] (20ug) can be purchased separately from OriGene.



Anti-NHEJ1 mouse monoclonal antibody ([TA502008]) immunofluorescent staining of COS7 cells transiently transfected by pCMV6-ENTRY NHEJ1 ([RC203393]).



Flow cytometric Analysis of HeLa cells, using anti-NHEJ1 antibody ([TA502008]), (Red), compared to a nonspecific negative control antibody (TA50011), (Blue).



Flow cytometric Analysis of Jurkat cells, using anti-NHEJ1 antibody ([TA502008]), (Red), compared to a nonspecific negative control antibody (TA50011), (Blue).