

## Product datasheet for **TA502006BM**

### **XLF (NHEJ1) Mouse Monoclonal Antibody (HRP conjugated) [Clone ID: OTI2C8]**

#### **Product data:**

|                                |  |
|--------------------------------|--|
| <b>Product Type:</b>           | Primary Antibodies   |
| <b>Clone Name:</b>             | OTI2C8   |
| <b>Applications:</b>           | FC, IF, WB   |
| <b>Recommended Dilution:</b>   | WB 1:500~2000, IF 1:100, FLOW 1:100  |
| <b>Reactivity:</b>             | Human, Monkey  |
| <b>Host:</b>                   | Mouse  |
| <b>Isotype:</b>                | IgG1   |
| <b>Clonality:</b>              | Monoclonal   |
| <b>Immunogen:</b>              | Full length human recombinant protein of human NHEJ1 (NP_079058) produced in HEK293T cell.   |
| <b>Formulation:</b>            | PBS (pH 7.3) containing 1% BSA, 50% glycerol.  |
| <b>Concentration:</b>          | 0.5 mg/ml  |
| <b>Purification:</b>           | Purified from mouse ascites fluids or tissue culture supernatant by affinity chromatography (protein A/G)  |
| <b>Conjugation:</b>            | HRP  |
| <b>Storage:</b>                | Store at -20°C as received.  |
| <b>Stability:</b>              | Stable for 12 months from date of receipt.   |
| <b>Predicted Protein Size:</b> | 33.2 kDa   |
| <b>Gene Name:</b>              | non-homologous end joining factor 1  |
| <b>Database Link:</b>          | <a href="#">NP_079058</a><br><a href="#">Entrez Gene 701542 Monkey</a> <a href="#">Entrez Gene 79840 Human</a><br><a href="#">Q9H9Q4</a>   |
| <b>Background:</b>             | Double-strand breaks in DNA result from genotoxic stresses and are among the most damaging of DNA lesions. This gene encodes a DNA repair factor essential for the nonhomologous end-joining pathway, which preferentially mediates repair of double-stranded breaks. Mutations in this gene cause different kinds of severe combined immunodeficiency disorders. [provided by RefSeq, Jul |

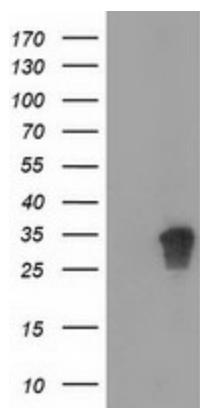


[View online »](#)

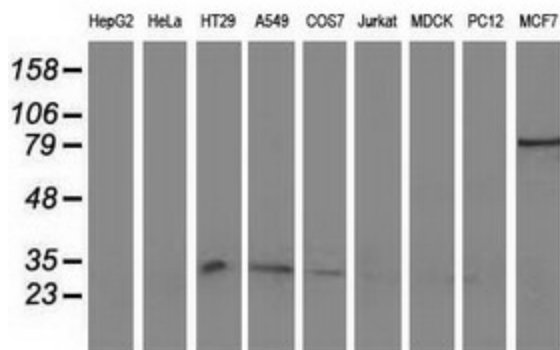
Synonyms: XLF

Protein Pathways: Non-homologous end-joining

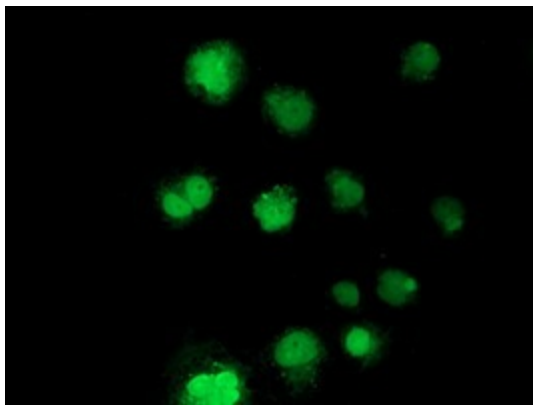
**Product images:**



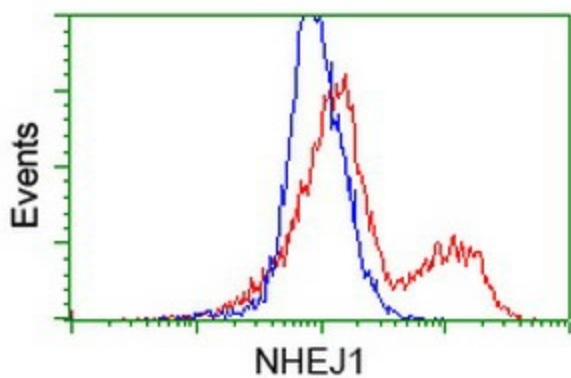
HEK293T cells were transfected with the pCMV6-ENTRY control (Left lane) or pCMV6-ENTRY NHEJ1 ([RC203393], Right lane) cDNA for 48 hrs and lysed. Equivalent amounts of cell lysates (5 ug per lane) were separated by SDS-PAGE and immunoblotted with anti-NHEJ1. Positive lysates [LY403031] (100ug) and [LC403031] (20ug) can be purchased separately from OriGene.



Western blot analysis of extracts (35ug) from 9 different cell lines by using anti-NHEJ1 monoclonal antibody (HepG2: human; HeLa: human; SVT2: mouse; A549: human; COS7: monkey; Jurkat: human; MDCK: canine; PC12: rat; MCF7: human).



Anti-NHEJ1 mouse monoclonal antibody ([TA502006]) immunofluorescent staining of COS7 cells transiently transfected by pCMV6-ENTRY NHEJ1 ([RC203393]).



HEK293T cells transfected with either [RC203393] overexpress plasmid (Red) or empty vector control plasmid (Blue) were immunostained by anti-NHEJ1 antibody ([TA502006]), and then analyzed by flow cytometry.