

## Product datasheet for **TA501994S**

### **PBLD Mouse Monoclonal Antibody [Clone ID: OTI7G5]**

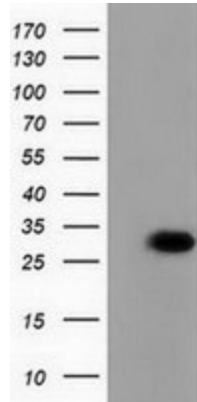
#### **Product data:**

Product Type:	Primary Antibodies
Clone Name:	OTI7G5
Applications:	FC, IF, WB
Recommended Dilution:	WB 1:2000, IF 1:100, FLOW 1:100
Reactivity:	Human
Host:	Mouse
Isotype:	IgG1
Clonality:	Monoclonal
Immunogen:	Full length human recombinant protein of human PBLD (NP_071412) produced in HEK293T cell.
Formulation:	PBS (pH 7.3) containing 1% BSA, 50% glycerol and 0.02% sodium azide.
Concentration:	0.87 mg/ml
Purification:	Purified from mouse ascites fluids or tissue culture supernatant by affinity chromatography (protein A/G)
Conjugation:	Unconjugated
Storage:	Store at -20°C as received.
Stability:	Stable for 12 months from date of receipt.
Predicted Protein Size:	31.6 kDa
Gene Name:	phenazine biosynthesis like protein domain containing
Database Link:	<a href="#">NP_071412</a> <a href="#">Entrez Gene 64081 Human</a> <a href="#">P30039</a>
Synonyms:	HEL-S-306; MAWBP; MAWDBP

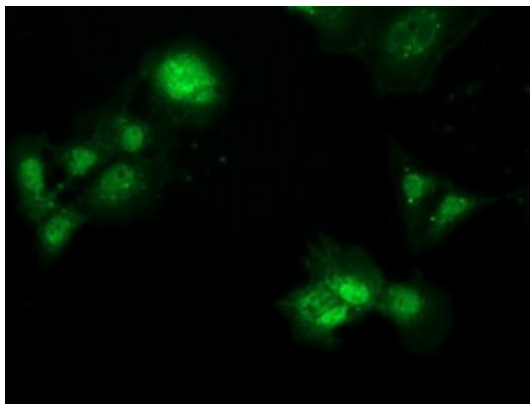


[View online »](#)

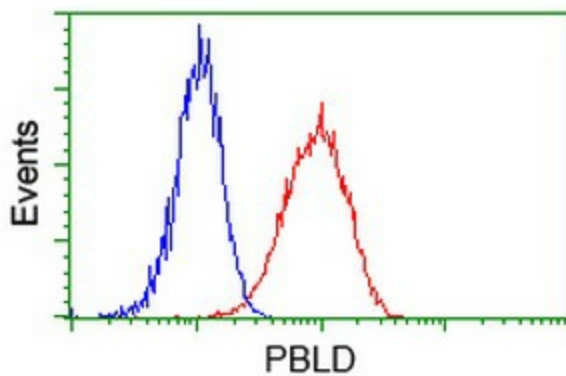
Product images:



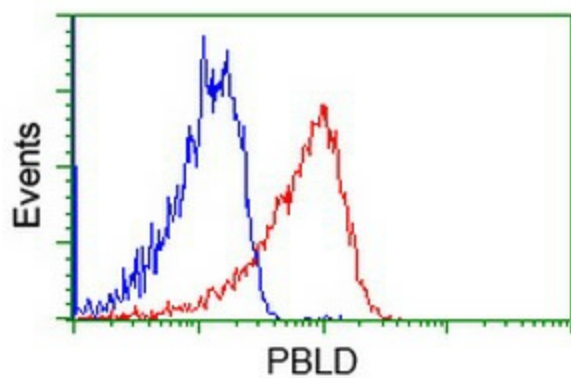
HEK293T cells were transfected with the pCMV6-ENTRY control (Cat# [PS100001], Left lane) or pCMV6-ENTRY PBLD (Cat# [RC202328], Right lane) cDNA for 48 hrs and lysed. Equivalent amounts of cell lysates (5 ug per lane) were separated by SDS-PAGE and immunoblotted with anti-PBLD (Cat# [TA501994]). Positive lysates [LY411757] (100ug) and [LC411757] (20ug) can be purchased separately from OriGene.



Anti-PBLD mouse monoclonal antibody ([TA501994]) immunofluorescent staining of COS7 cells transiently transfected by pCMV6-ENTRY PBLD ([RC202328]).



Flow cytometric Analysis of HeLa cells, using anti-PBLD antibody ([TA501994]), (Red), compared to a nonspecific negative control antibody (TA50011), (Blue).



Flow cytometric Analysis of Jurkat cells, using anti-PBLD antibody ([TA501994]), (Red), compared to a nonspecific negative control antibody (TA50011), (Blue).