

## Product datasheet for **TA501985S**

### PECR Mouse Monoclonal Antibody [Clone ID: OTI1E4]

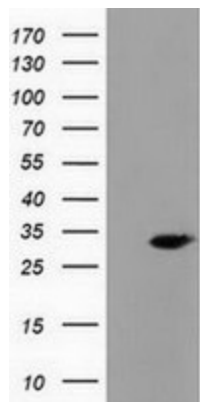
#### Product data:

Product Type:	Primary Antibodies
Clone Name:	OTI1E4
Applications:	IF, WB
Recommended Dilution:	WB 1:500~2000, IF 1:100
Reactivity:	Human
Host:	Mouse
Isotype:	IgG1
Clonality:	Monoclonal
Immunogen:	Full length human recombinant protein of human PECR (NP_060911) produced in HEK293T cell.
Formulation:	PBS (pH 7.3) containing 1% BSA, 50% glycerol and 0.02% sodium azide.
Concentration:	0.61 mg/ml
Purification:	Purified from mouse ascites fluids or tissue culture supernatant by affinity chromatography (protein A/G)
Conjugation:	Unconjugated
Storage:	Store at -20°C as received.
Stability:	Stable for 12 months from date of receipt.
Predicted Protein Size:	32.4 kDa
Gene Name:	peroxisomal trans-2-enoyl-CoA reductase
Database Link:	<a href="#">NP_060911</a> <a href="#">Entrez Gene 55825 Human</a> <a href="#">Q9BY49</a>
Synonyms:	DCRRP; HPDHASE; HSA250303; PVIARL; SDR29C1; TERP
Protein Families:	Druggable Genome
Protein Pathways:	Biosynthesis of unsaturated fatty acids

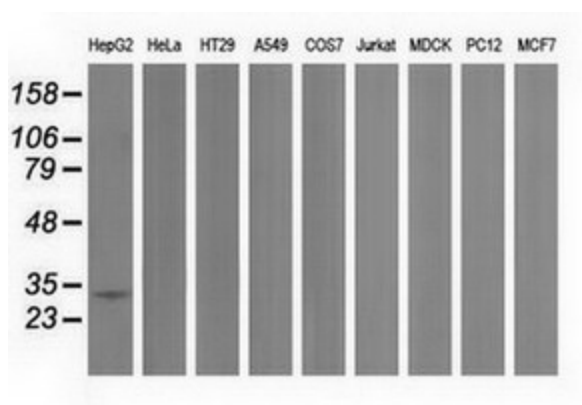


[View online »](#)

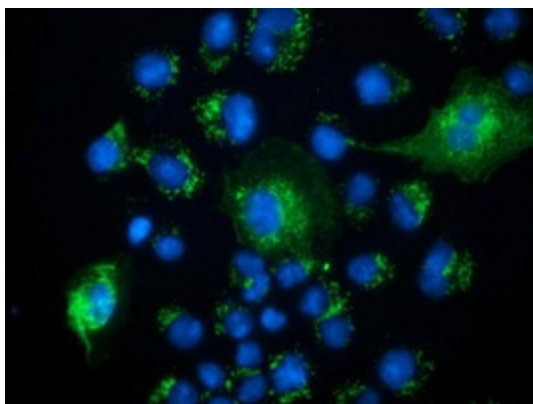
**Product images:**



HEK293T cells were transfected with the pCMV6-ENTRY control (Left lane) or pCMV6-ENTRY PECR ([RC200822], Right lane) cDNA for 48 hrs and lysed. Equivalent amounts of cell lysates (5 ug per lane) were separated by SDS-PAGE and immunoblotted with anti-PECR. Positive lysates [LY413023] (100ug) and [LC413023] (20ug) can be purchased separately from OriGene.



Western blot analysis of extracts (35ug) from 9 different cell lines by using anti-PECR monoclonal antibody.



Anti-PECR mouse monoclonal antibody ([TA501985]) immunofluorescent staining of COS7 cells transiently transfected by pCMV6-ENTRY PECR ([RC200822]).