

Product datasheet for **TA501983S**

SPR Mouse Monoclonal Antibody [Clone ID: OTI4F5]

Product data:

| | |
|-------------------------|---|
| Product Type: | Primary Antibodies |
| Clone Name: | OTI4F5 |
| Applications: | FC, IF, IHC, WB |
| Recommended Dilution: | WB 1:500~2000, IHC 1:150, IF 1:100, FLOW 1:100 |
| Reactivity: | Human, Rat |
| Host: | Mouse |
| Isotype: | IgG1 |
| Clonality: | Monoclonal |
| Immunogen: | Full length human recombinant protein of human SPR (NP_003115) produced in HEK293T cell. |
| Formulation: | PBS (pH 7.3) containing 1% BSA, 50% glycerol and 0.02% sodium azide. |
| Concentration: | 0.31 mg/ml |
| Purification: | Purified from mouse ascites fluids or tissue culture supernatant by affinity chromatography (protein A/G) |
| Conjugation: | Unconjugated |
| Storage: | Store at -20°C as received. |
| Stability: | Stable for 12 months from date of receipt. |
| Predicted Protein Size: | 27.9 kDa |
| Gene Name: | sepiapterin reductase |
| Database Link: | NP_003115 Entrez Gene 29270 Rat Entrez Gene 6697 Human P35270 |
| Background: | This gene encodes an aldo-keto reductase that catalyzes the NADPH-dependent reduction of pteridine derivatives and is important in the biosynthesis of tetrahydrobiopterin (BH4). Mutations in this gene result in DOPA-responsive dystonia due to sepiapterin reductase deficiency. A pseudogene has been identified on chromosome 1. [provided by RefSeq] |
| Synonyms: | SDR38C1 |

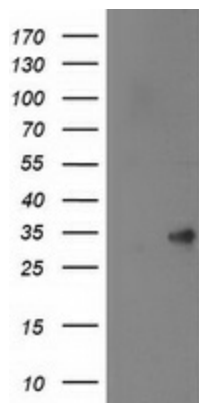


[View online »](#)

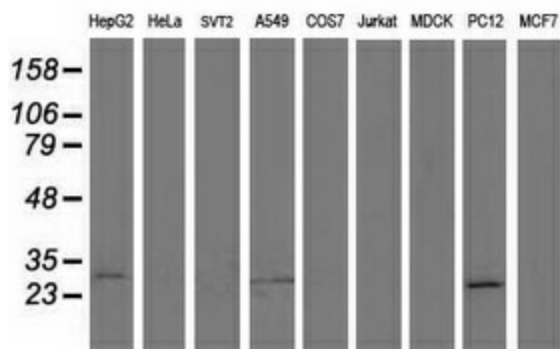
Protein Families: Druggable Genome

Protein Pathways: Folate biosynthesis, Metabolic pathways

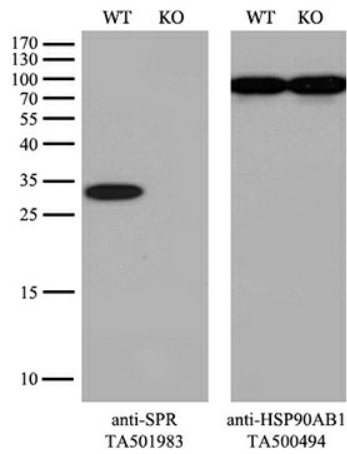
Product images:



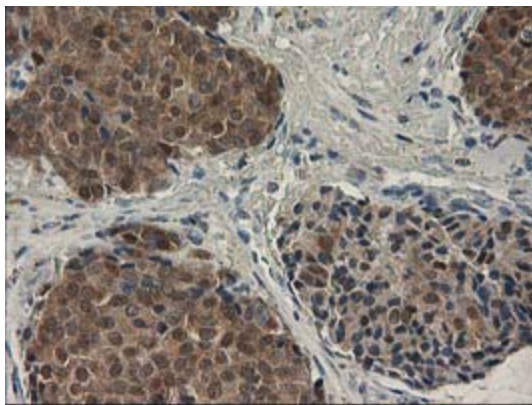
HEK293T cells were transfected with the pCMV6-ENTRY control (Left lane) or pCMV6-ENTRY SPR ([RC205679], Right lane) cDNA for 48 hrs and lysed. Equivalent amounts of cell lysates (5 ug per lane) were separated by SDS-PAGE and immunoblotted with anti-SPR ([TA501983]). Positive lysates [LY401086] (100ug) and [LC401086] (20ug) can be purchased separately from OriGene.



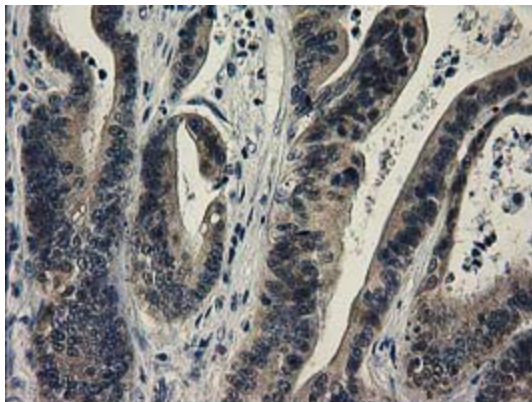
Western blot analysis of extracts (35ug) from 9 different cell lines by using anti-SPR monoclonal antibody.



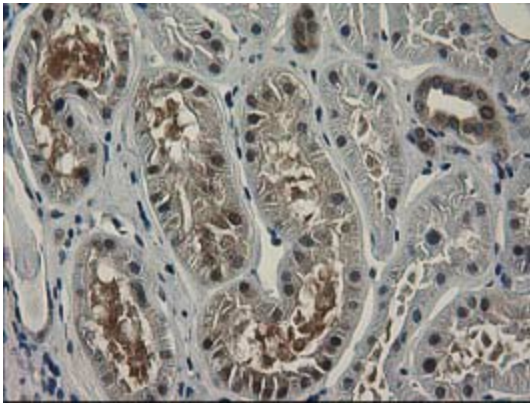
Equivalent amounts of cell lysates (10 ug per lane) of wild-type HeLa cells (WT, Cat# LC810HELA) and SPR-Knockout HeLa cells (KO, Cat# [LC810223]) were separated by SDS-PAGE and immunoblotted with anti-SPR monoclonal antibody [TA501983]. Then the blotted membrane was stripped and reprobed with anti-HSP90AB1 antibody ([TA500494]) as a loading control (1:500).



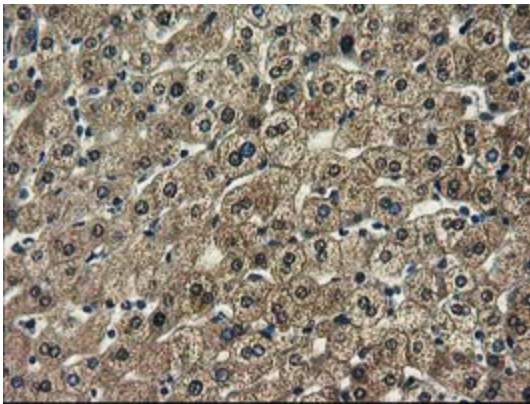
Immunohistochemical staining of paraffin-embedded Adenocarcinoma of Human breast tissue using anti-SPR mouse monoclonal antibody. (Heat-induced epitope retrieval by 10mM citric buffer, pH6.0, 100°C for 10min, [TA501983])



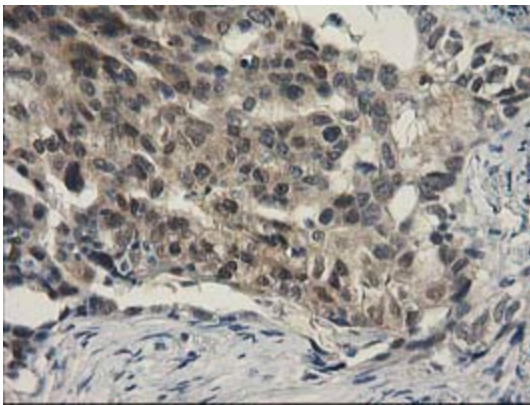
Immunohistochemical staining of paraffin-embedded Adenocarcinoma of Human colon tissue using anti-SPR mouse monoclonal antibody. (Heat-induced epitope retrieval by 10mM citric buffer, pH6.0, 100°C for 10min, [TA501983])



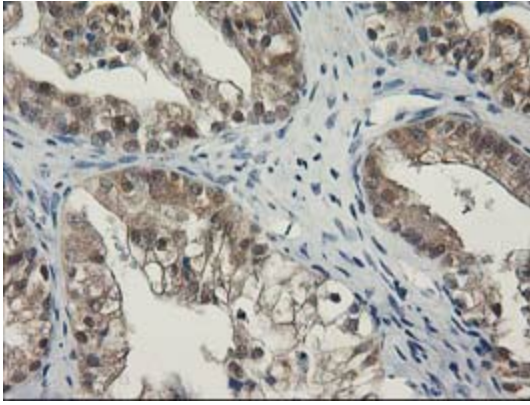
Immunohistochemical staining of paraffin-embedded Human Kidney tissue within the normal limits using anti-SPR mouse monoclonal antibody. (Heat-induced epitope retrieval by 10mM citric buffer, pH6.0, 100°C for 10min, [TA501983])



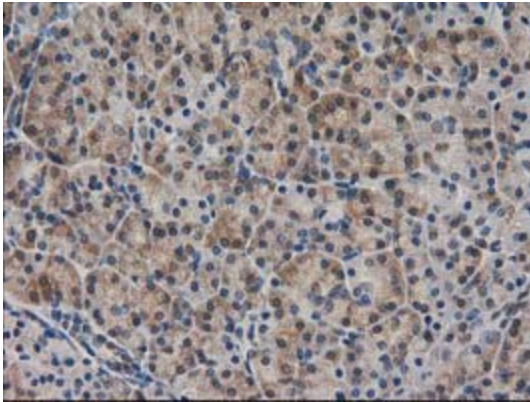
Immunohistochemical staining of paraffin-embedded Human liver tissue within the normal limits using anti-SPR mouse monoclonal antibody. (Heat-induced epitope retrieval by 10mM citric buffer, pH6.0, 100°C for 10min, [TA501983])



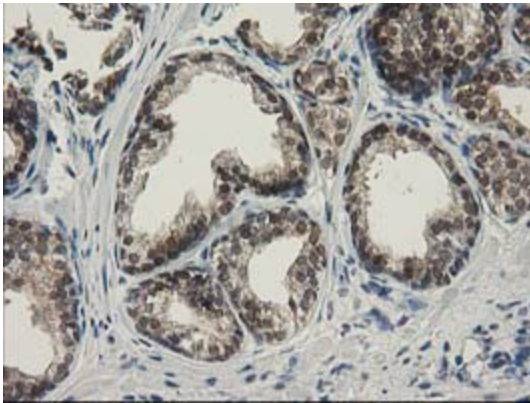
Immunohistochemical staining of paraffin-embedded Carcinoma of Human lung tissue using anti-SPR mouse monoclonal antibody. (Heat-induced epitope retrieval by 10mM citric buffer, pH6.0, 100°C for 10min, [TA501983])



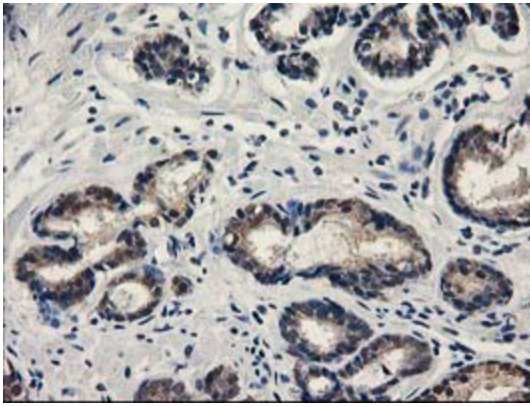
Immunohistochemical staining of paraffin-embedded Adenocarcinoma of Human ovary tissue using anti-SPR mouse monoclonal antibody. (Heat-induced epitope retrieval by 10mM citric buffer, pH6.0, 100°C for 10min, [TA501983])



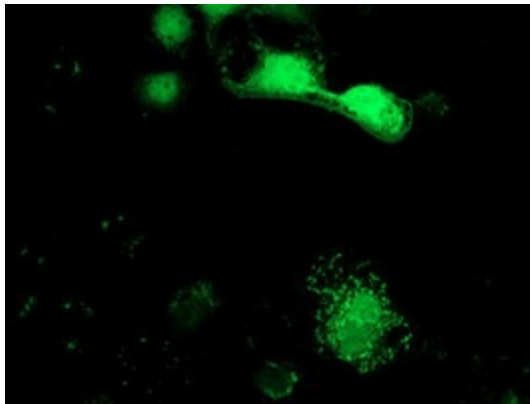
Immunohistochemical staining of paraffin-embedded Human pancreas tissue within the normal limits using anti-SPR mouse monoclonal antibody. (Heat-induced epitope retrieval by 10mM citric buffer, pH6.0, 100°C for 10min, [TA501983])



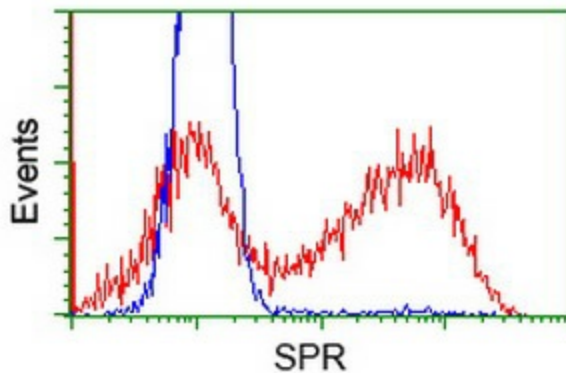
Immunohistochemical staining of paraffin-embedded Human prostate tissue within the normal limits using anti-SPR mouse monoclonal antibody. (Heat-induced epitope retrieval by 10mM citric buffer, pH6.0, 100°C for 10min, [TA501983])



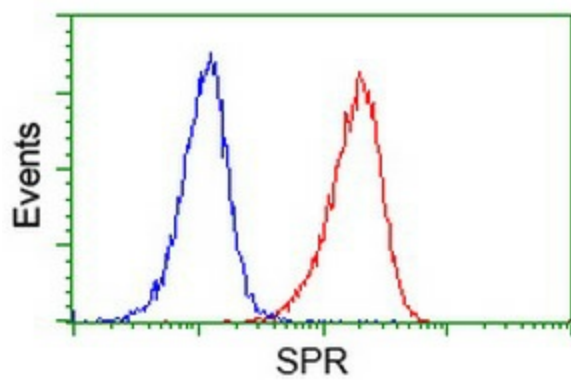
Immunohistochemical staining of paraffin-embedded Carcinoma of Human prostate tissue using anti-SPR mouse monoclonal antibody. (Heat-induced epitope retrieval by 10mM citric buffer, pH6.0, 100°C for 10min, [TA501983])



Anti-SPR mouse monoclonal antibody ([TA501983]) immunofluorescent staining of COS7 cells transiently transfected by pCMV6-ENTRY SPR ([RC205679]).



HEK293T cells transfected with either [RC205679] overexpress plasmid (Red) or empty vector control plasmid (Blue) were immunostained by anti-SPR antibody ([TA501983]), and then analyzed by flow cytometry.



Flow cytometric Analysis of Jurkat cells, using anti-SPR antibody ([TA501983]), (Red), compared to a nonspecific negative control antibody, (Blue).