

## Product datasheet for **TA501983**

### SPR Mouse Monoclonal Antibody [Clone ID: OTI4F5]

#### Product data:

Product Type:	Primary Antibodies
Clone Name:	OTI4F5
Applications:	FC, IF, IHC, WB
Recommended Dilution:	WB 1:500~2000, IHC 1:150, IF 1:100, FLOW 1:100
Reactivity:	Human, Rat
Host:	Mouse
Isotype:	IgG1
Clonality:	Monoclonal
Immunogen:	Full length human recombinant protein of human SPR (NP_003115) produced in HEK293T cell.
Formulation:	PBS (pH 7.3) containing 1% BSA, 50% glycerol and 0.02% sodium azide.
Concentration:	0.31 mg/ml
Purification:	Purified from mouse ascites fluids or tissue culture supernatant by affinity chromatography (protein A/G)
Conjugation:	Unconjugated
Storage:	Store at -20°C as received.
Stability:	Stable for 12 months from date of receipt.
Predicted Protein Size:	27.9 kDa
Gene Name:	sepiapterin reductase
Database Link:	<a href="#">NP_003115</a> <a href="#">Entrez Gene 29270 Rat</a> <a href="#">Entrez Gene 6697 Human</a> <a href="#">P35270</a>
Background:	This gene encodes an aldo-keto reductase that catalyzes the NADPH-dependent reduction of pteridine derivatives and is important in the biosynthesis of tetrahydrobiopterin (BH4). Mutations in this gene result in DOPA-responsive dystonia due to sepiapterin reductase deficiency. A pseudogene has been identified on chromosome 1. [provided by RefSeq]
Synonyms:	SDR38C1

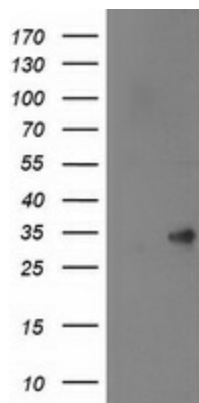


[View online »](#)

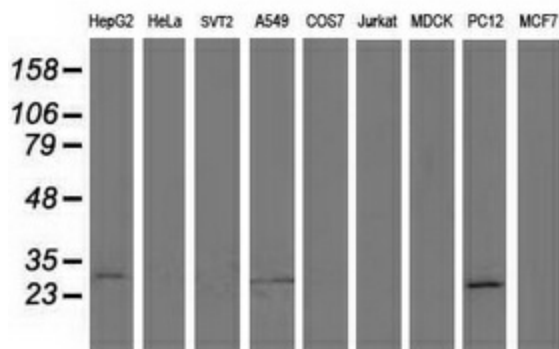
**Protein Families:** Druggable Genome

**Protein Pathways:** Folate biosynthesis, Metabolic pathways

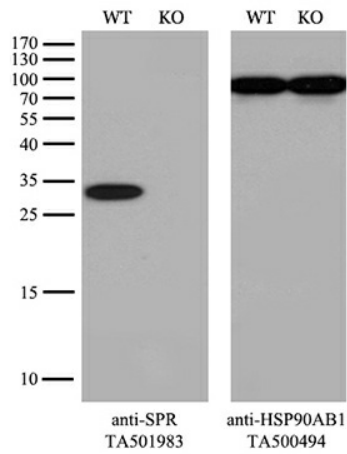
**Product images:**



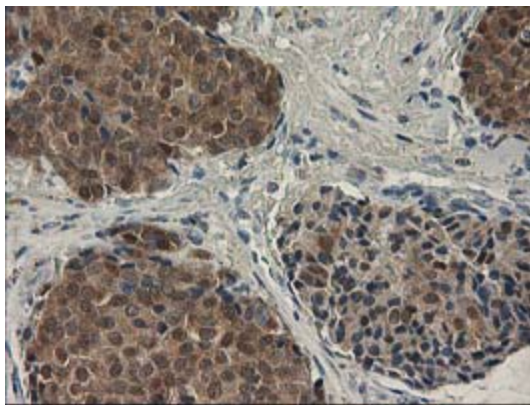
HEK293T cells were transfected with the pCMV6-ENTRY control (Left lane) or pCMV6-ENTRY SPR ([RC205679], Right lane) cDNA for 48 hrs and lysed. Equivalent amounts of cell lysates (5 ug per lane) were separated by SDS-PAGE and immunoblotted with anti-SPR (TA501983). Positive lysates [LY401086] (100ug) and [LC401086] (20ug) can be purchased separately from OriGene.



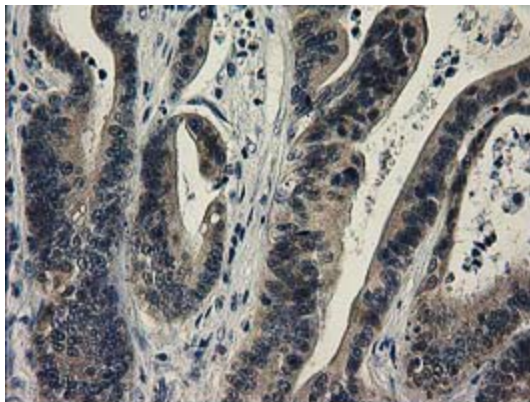
Western blot analysis of extracts (35ug) from 9 different cell lines by using anti-SPR monoclonal antibody.



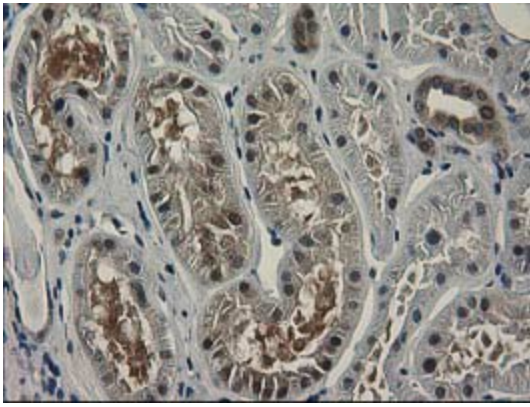
Equivalent amounts of cell lysates (10 ug per lane) of wild-type HeLa cells (WT, Cat# LC810HELA) and SPR-Knockout HeLa cells (KO, Cat# [LC810223]) were separated by SDS-PAGE and immunoblotted with anti-SPR monoclonal antibody TA501983. Then the blotted membrane was stripped and reprobed with anti-HSP90AB1 antibody ([TA500494]) as a loading control (1:500).



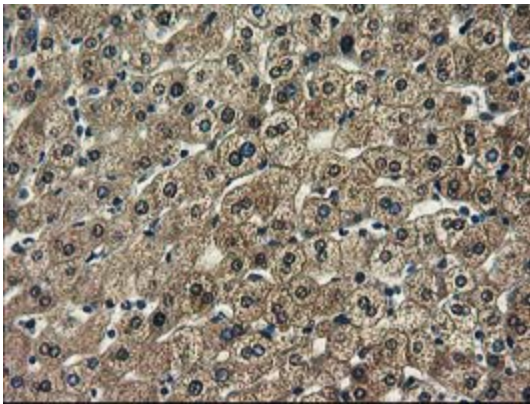
Immunohistochemical staining of paraffin-embedded Adenocarcinoma of Human breast tissue using anti-SPR mouse monoclonal antibody. (Heat-induced epitope retrieval by 10mM citric buffer, pH6.0, 100°C for 10min, TA501983)



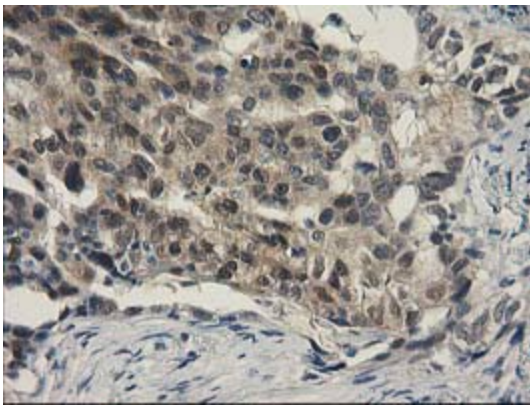
Immunohistochemical staining of paraffin-embedded Adenocarcinoma of Human colon tissue using anti-SPR mouse monoclonal antibody. (Heat-induced epitope retrieval by 10mM citric buffer, pH6.0, 100°C for 10min, TA501983)



Immunohistochemical staining of paraffin-embedded Human Kidney tissue within the normal limits using anti-SPR mouse monoclonal antibody. (Heat-induced epitope retrieval by 10mM citric buffer, pH6.0, 100°C for 10min, TA501983)

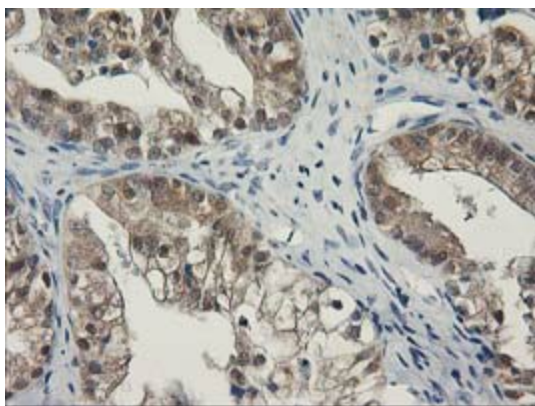


Immunohistochemical staining of paraffin-embedded Human liver tissue within the normal limits using anti-SPR mouse monoclonal antibody. (Heat-induced epitope retrieval by 10mM citric buffer, pH6.0, 100°C for 10min, TA501983)

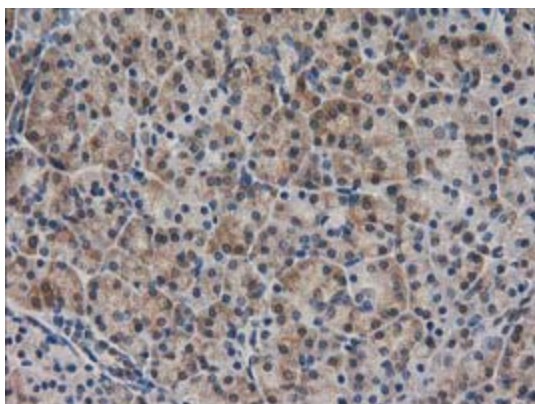


Immunohistochemical staining of paraffin-embedded Carcinoma of Human lung tissue using anti-SPR mouse monoclonal antibody. (Heat-induced epitope retrieval by 10mM citric buffer, pH6.0, 100°C for 10min, TA501983)

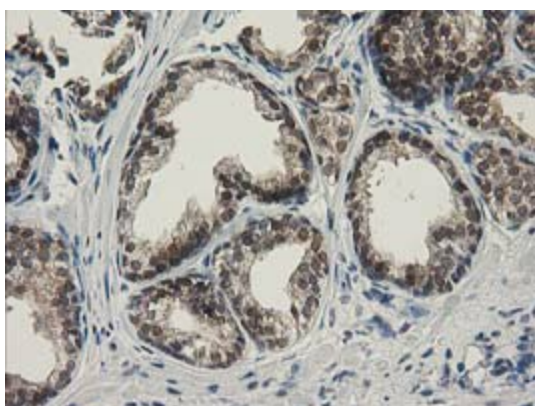




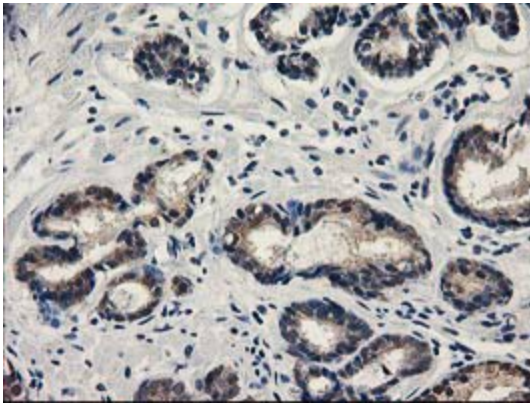
Immunohistochemical staining of paraffin-embedded Adenocarcinoma of Human ovary tissue using anti-SPR mouse monoclonal antibody. (Heat-induced epitope retrieval by 10mM citric buffer, pH6.0, 100°C for 10min, TA501983)



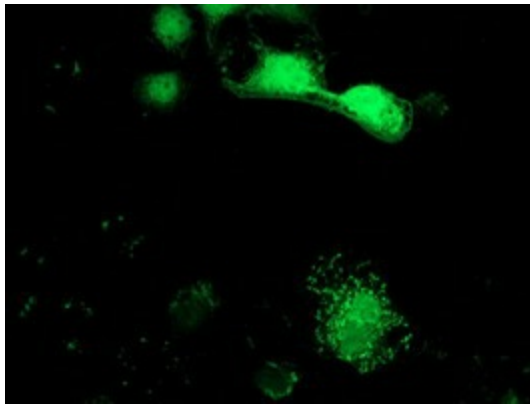
Immunohistochemical staining of paraffin-embedded Human pancreas tissue within the normal limits using anti-SPR mouse monoclonal antibody. (Heat-induced epitope retrieval by 10mM citric buffer, pH6.0, 100°C for 10min, TA501983)



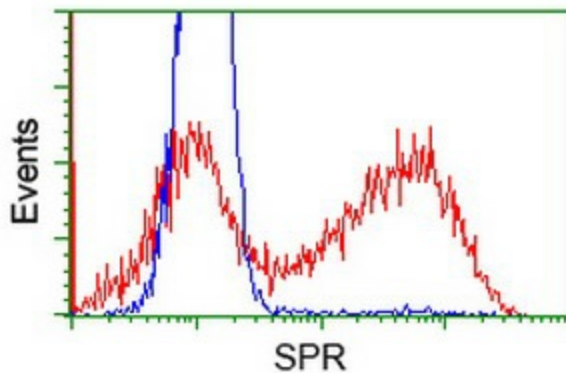
Immunohistochemical staining of paraffin-embedded Human prostate tissue within the normal limits using anti-SPR mouse monoclonal antibody. (Heat-induced epitope retrieval by 10mM citric buffer, pH6.0, 100°C for 10min, TA501983)



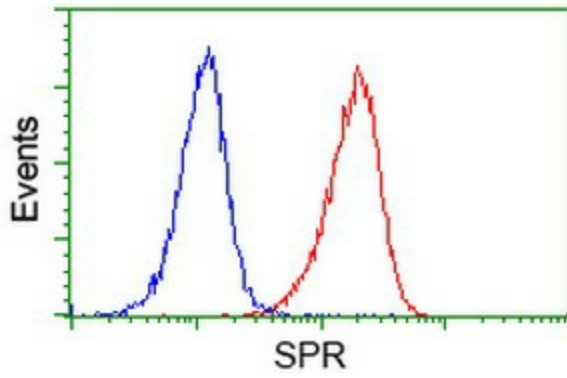
Immunohistochemical staining of paraffin-embedded Carcinoma of Human prostate tissue using anti-SPR mouse monoclonal antibody. (Heat-induced epitope retrieval by 10mM citric buffer, pH6.0, 100°C for 10min, TA501983)



Anti-SPR mouse monoclonal antibody (TA501983) immunofluorescent staining of COS7 cells transiently transfected by pCMV6-ENTRY SPR ([RC205679]).



HEK293T cells transfected with either [RC205679] overexpress plasmid (Red) or empty vector control plasmid (Blue) were immunostained by anti-SPR antibody (TA501983), and then analyzed by flow cytometry.



Flow cytometric Analysis of Jurkat cells, using anti-SPR antibody (TA501983), (Red), compared to a nonspecific negative control antibody, (Blue).