

## Product datasheet for **TA501982S**

### SPR Mouse Monoclonal Antibody [Clone ID: OTI2F7]

#### Product data:

Product Type:	Primary Antibodies
Clone Name:	OTI2F7
Applications:	WB
Recommended Dilution:	WB 1:500~2000
Reactivity:	Human, Monkey
Host:	Mouse
Isotype:	IgG1
Clonality:	Monoclonal
Immunogen:	Full length human recombinant protein of human SPR (NP_003115) produced in HEK293T cell.
Formulation:	PBS (pH 7.3) containing 1% BSA, 50% glycerol and 0.02% sodium azide.
Concentration:	1 mg/ml
Purification:	Purified from mouse ascites fluids or tissue culture supernatant by affinity chromatography (protein A/G)
Conjugation:	Unconjugated
Storage:	Store at -20°C as received.
Stability:	Stable for 12 months from date of receipt.
Predicted Protein Size:	27.9 kDa
Gene Name:	sepiapterin reductase
Database Link:	<a href="#">NP_003115</a> <a href="#">Entrez Gene 705317 Monkey</a> <a href="#">Entrez Gene 6697 Human</a> <a href="#">P35270</a>
Background:	This gene encodes an aldo-keto reductase that catalyzes the NADPH-dependent reduction of pteridine derivatives and is important in the biosynthesis of tetrahydrobiopterin (BH4). Mutations in this gene result in DOPA-responsive dystonia due to sepiapterin reductase deficiency. A pseudogene has been identified on chromosome 1. [provided by RefSeq]
Synonyms:	SDR38C1

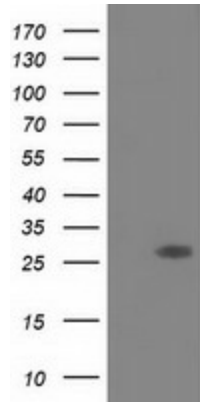


[View online »](#)

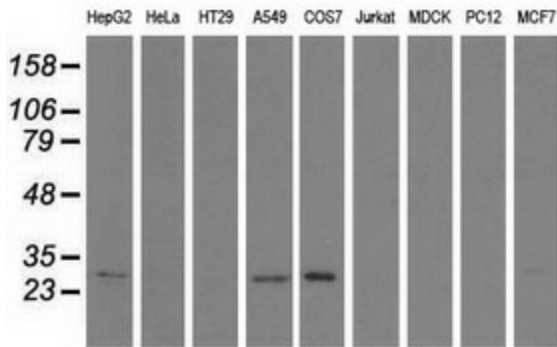
**Protein Families:** Druggable Genome

**Protein Pathways:** Folate biosynthesis, Metabolic pathways

**Product images:**



HEK293T cells were transfected with the pCMV6-ENTRY control (Left lane) or pCMV6-ENTRY SPR ([RC205679], Right lane) cDNA for 48 hrs and lysed. Equivalent amounts of cell lysates (5 ug per lane) were separated by SDS-PAGE and immunoblotted with anti-SPR. Positive lysates [LY401086] (100ug) and [LC401086] (20ug) can be purchased separately from OriGene.



Western blot analysis of extracts (35ug) from 9 different cell lines by using anti-SPR monoclonal antibody.