

## Product datasheet for **TA501976S**

### OSBPL11 Mouse Monoclonal Antibody [Clone ID: OTI7B3]

#### Product data:

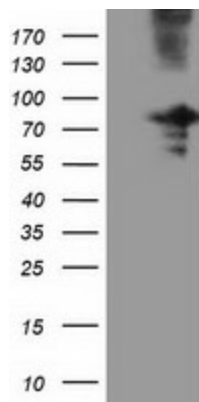
|                         |  |
|-------------------------|--|
| Product Type:           | Primary Antibodies   |
| Clone Name:             | OTI7B3   |
| Applications:           | WB   |
| Recommended Dilution:   | WB 1:200~500   |
| Reactivity:             | Human, Dog, Rat, Monkey, Mouse   |
| Host:                   | Mouse  |
| Isotype:                | IgG2a  |
| Clonality:              | Monoclonal   |
| Immunogen:              | Full length human recombinant protein of human OSBPL11 (NP_073613) produced in HEK293T cell.   |
| Formulation:            | PBS (pH 7.3) containing 1% BSA, 50% glycerol and 0.02% sodium azide.   |
| Concentration:          | 0.85 mg/ml   |
| Purification:           | Purified from mouse ascites fluids or tissue culture supernatant by affinity chromatography (protein A/G)  |
| Conjugation:            | Unconjugated   |
| Storage:                | Store at -20°C as received.  |
| Stability:              | Stable for 12 months from date of receipt.   |
| Predicted Protein Size: | 83.5 kDa   |
| Gene Name:              | oxysterol binding protein like 11  |
| Database Link:          | <a href="#">NP_073613</a><br><a href="#">Entrez Gene 106326 Mouse</a> <a href="#">Entrez Gene 303888 Rat</a> <a href="#">Entrez Gene 100856388 Dog</a> <a href="#">Entrez Gene 716096 Monkey</a> <a href="#">Entrez Gene 114885 Human</a><br><a href="#">Q9BXB4</a>  |
| Background:             | This gene encodes a member of the oxysterol-binding protein (OSBP) family, a group of intracellular lipid receptors. Like most members, the encoded protein contains an N-terminal pleckstrin homology domain and a highly conserved C-terminal OSBP-like sterol-binding domain. [provided by RefSeq]. COMPLETENESS: complete on the 3' end. |



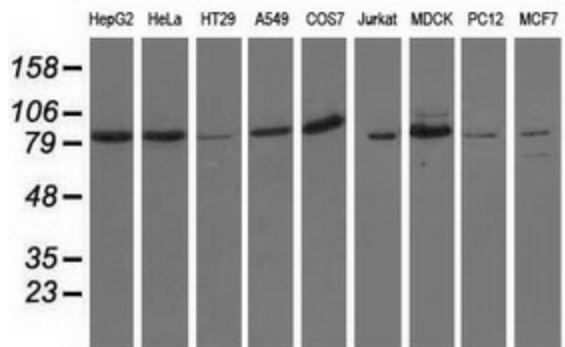
[View online »](#)

Synonyms: ORP-11; ORP11; OSBP12; TCCCIA00292

**Product images:**



HEK293T cells were transfected with the pCMV6-ENTRY control (Left lane) or pCMV6-ENTRY OSBPL11 ([RC209418], Right lane) cDNA for 48 hrs and lysed. Equivalent amounts of cell lysates (5 ug per lane) were separated by SDS-PAGE and immunoblotted with anti-OSBPL11. Positive lysates [LY411565] (100ug) and [LC411565] (20ug) can be purchased separately from OriGene.



Western blot analysis of extracts (35ug) from 9 different cell lines by using anti-OSBPL11 monoclonal antibody.