

## Product datasheet for **TA501973AM**

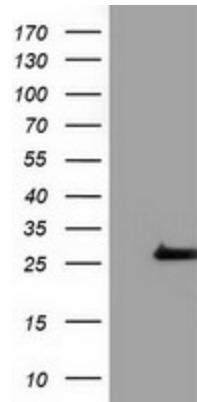
### OTUB2 Mouse Monoclonal Antibody (Biotin conjugated) [Clone ID: OTI6C7]

#### Product data:

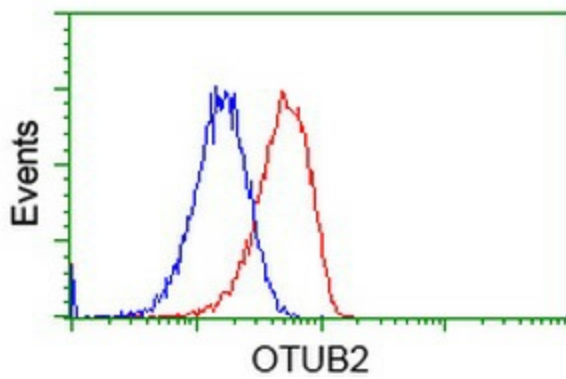
|                         |  |
|-------------------------|--|
| Product Type:           | Primary Antibodies   |
| Clone Name:             | OTI6C7   |
| Applications:           | FC, WB   |
| Recommended Dilution:   | WB 1:500~2000, FLOW 1:100  |
| Reactivity:             | Human, Mouse, Rat  |
| Host:                   | Mouse  |
| Isotype:                | IgG1   |
| Clonality:              | Monoclonal   |
| Immunogen:              | Full length human recombinant protein of human OTUB2 (NP_075601) produced in HEK293T cell.   |
| Formulation:            | PBS (pH 7.3) containing 1% BSA, 50% glycerol and 0.02% sodium azide.   |
| Concentration:          | 0.5 mg/ml  |
| Purification:           | Purified from mouse ascites fluids or tissue culture supernatant by affinity chromatography (protein A/G)  |
| Conjugation:            | Biotin   |
| Storage:                | Store at -20°C as received.  |
| Stability:              | Stable for 12 months from date of receipt.   |
| Predicted Protein Size: | 27.0 kDa   |
| Gene Name:              | OTU deubiquitinase, ubiquitin aldehyde binding 2   |
| Database Link:          | <a href="#">NP_075601</a><br><a href="#">Entrez Gene 68149 Mouse</a> <a href="#">Entrez Gene 314405 Rat</a> <a href="#">Entrez Gene 78990 Human</a><br><a href="#">Q96DC9</a>  |
| Background:             | Otubains are deubiquitylating cysteine proteases (DUBs; see MIM 602519) that belong to the ovarian tumor (OTU) protein superfamily. Like other DUBs, otubains cleave proteins precisely at the ubiquitin (UB; see MIM 191339)-protein bond. [supplied by OMIM] |
| Synonyms:               | C14orf137; OTB2; OTU2  |
| Protein Families:       | Protease   |



[View online »](#)

**Product images:**

HEK293T cells were transfected with the pCMV6-ENTRY control (Left lane) or pCMV6-ENTRY OTUB2 ([RC209650], Right lane) cDNA for 48 hrs and lysed. Equivalent amounts of cell lysates (5 ug per lane) were separated by SDS-PAGE and immunoblotted with anti-OTUB2. Positive lysates [LY402958] (100ug) and [LC402958] (20ug) can be purchased separately from OriGene.



Flow cytometric Analysis of HeLa cells, using anti-OTUB2 antibody ([TA501973]), (Red), compared to a nonspecific negative control antibody (TA50011), (Blue).