

## Product datasheet for **TA501967S**

### SLFNL1 Mouse Monoclonal Antibody [Clone ID: OTI2E9]

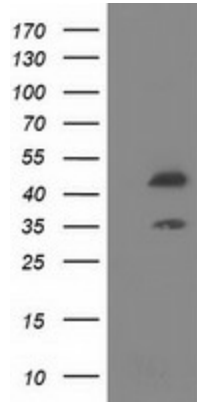
#### Product data:

Product Type:	Primary Antibodies
Clone Name:	OTI2E9
Applications:	FC, IF, WB
Recommended Dilution:	WB 1:2000, IF 1:100, Flow: 1:100
Reactivity:	Human
Host:	Mouse
Isotype:	IgG1
Clonality:	Monoclonal
Immunogen:	Full length human recombinant protein of human SLFNL1 (NP_659427) produced in HEK293T cell.
Formulation:	PBS (pH 7.3) containing 1% BSA, 50% glycerol and 0.02% sodium azide.
Concentration:	1.01 mg/ml
Purification:	Purified from mouse ascites fluids or tissue culture supernatant by affinity chromatography (protein A/G)
Conjugation:	Unconjugated
Storage:	Store at -20°C as received.
Stability:	Stable for 12 months from date of receipt.
Predicted Protein Size:	45.4 kDa
Gene Name:	schlafen like 1
Database Link:	<a href="#">NP_659427</a> <a href="#">Entrez Gene 200172 Human Q499Z3</a>
Synonyms:	FLJ23878; MGC43873

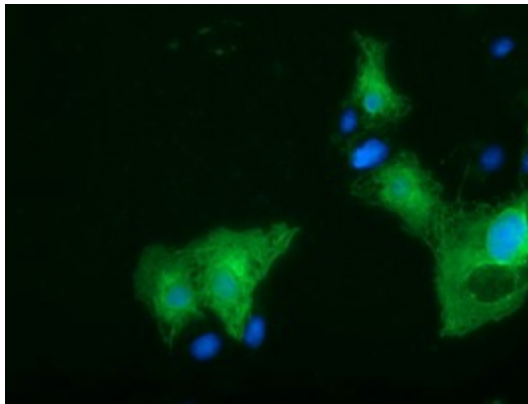


[View online »](#)

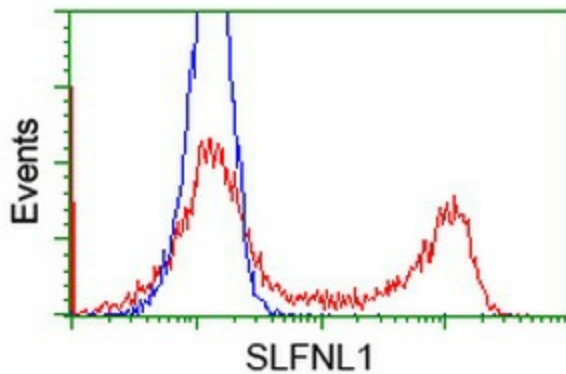
**Product images:**



HEK293T cells were transfected with the pCMV6-ENTRY control (Left lane) or pCMV6-ENTRY SLFNL1 ([RC205566], Right lane) cDNA for 48 hrs and lysed. Equivalent amounts of cell lysates (5 ug per lane) were separated by SDS-PAGE and immunoblotted with anti-SLFNL1. Positive lysates [LY408129] (100ug) and [LC408129] (20ug) can be purchased separately from OriGene.



Anti-SLFNL1 mouse monoclonal antibody ([TA501967]) immunofluorescent staining of COS7 cells transiently transfected by pCMV6-ENTRY SLFNL1 ([RC205566]).



HEK293T cells transfected with either [RC205566] overexpress plasmid (Red) or empty vector control plasmid (Blue) were immunostained by anti-SLFNL1 antibody ([TA501967]), and then analyzed by flow cytometry.