

## Product datasheet for **TA501966M**

### **BIN3 Mouse Monoclonal Antibody [Clone ID: OTI5E3]**

#### **Product data:**

Product Type:	Primary Antibodies
Clone Name:	OTI5E3
Applications:	FC, IF, IHC, WB
Recommended Dilution:	WB 1:500~2000, IHC 1:150, IF 1:100, FLOW 1:100
Reactivity:	Human, Dog, Rat, Monkey, Mouse
Host:	Mouse
Isotype:	IgG1
Clonality:	Monoclonal
Immunogen:	Full length human recombinant protein of human BIN3 (NP_061158) produced in HEK293T cell.
Formulation:	PBS (pH 7.3) containing 1% BSA, 50% glycerol and 0.02% sodium azide.
Concentration:	1 mg/ml
Purification:	Purified from mouse ascites fluids or tissue culture supernatant by affinity chromatography (protein A/G)
Conjugation:	Unconjugated
Storage:	Store at -20°C as received.
Stability:	Stable for 12 months from date of receipt.
Predicted Protein Size:	29.5 kDa
Gene Name:	bridging integrator 3
Database Link:	<a href="#">NP_061158</a> <a href="#">Entrez Gene 57784 Mouse</a> <a href="#">Entrez Gene 361065 Rat</a> <a href="#">Entrez Gene 608969 Dog</a> <a href="#">Entrez Gene 708840 Monkey</a> <a href="#">Entrez Gene 55909 Human</a> <a href="#">Q9NQY0</a>



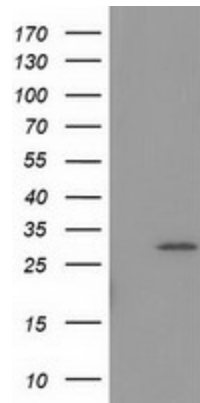
[View online »](#)

**Background:**

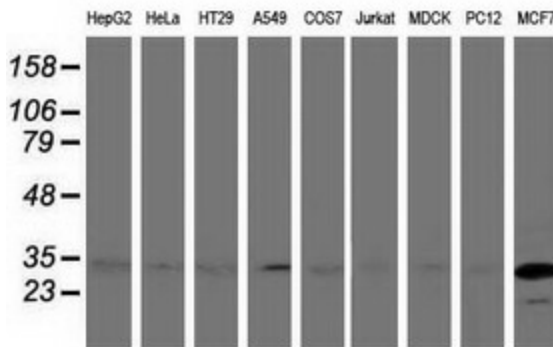
The product of this gene is a member of the BAR domain protein family. The encoded protein is comprised solely of a BAR domain which is predicted to form coiled-coil structures and proposed to mediate dimerization, sense and induce membrane curvature, and bind small GTPases. BAR domain proteins have been implicated in endocytosis, intracellular transport, and a diverse set of other processes. [provided by RefSeq]. COMPLETENESS: complete on the 3' end.

**Synonyms:**

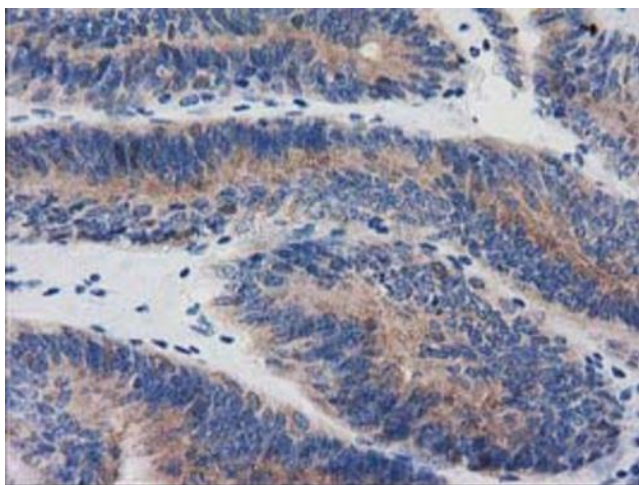
MGC14978

**Product images:**


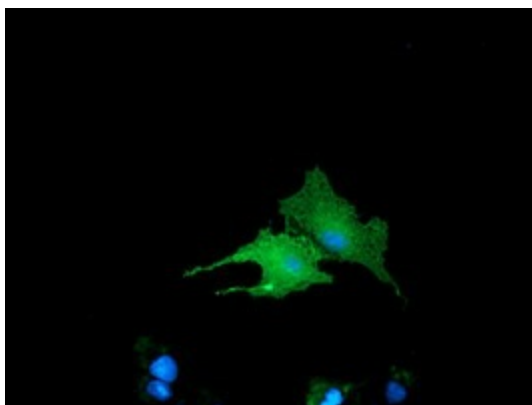
HEK293T cells were transfected with the pCMV6-ENTRY control (Left lane) or pCMV6-ENTRY BIN3 ([RC203378], Right lane) cDNA for 48 hrs and lysed. Equivalent amounts of cell lysates (5 ug per lane) were separated by SDS-PAGE and immunoblotted with anti-BIN3. Positive lysates [LY402705] (100ug) and [LC402705] (20ug) can be purchased separately from OriGene.



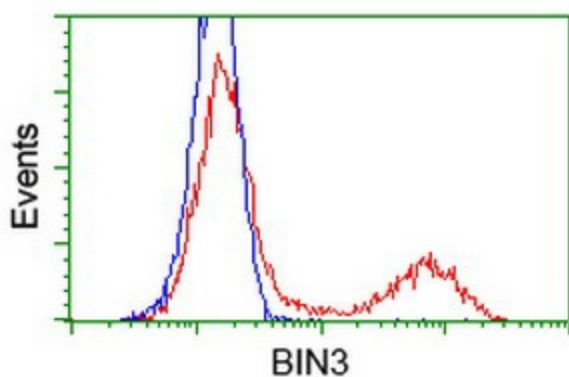
Western blot analysis of extracts (35ug) from 9 different cell lines by using anti-BIN3 monoclonal antibody.



Immunohistochemical staining of paraffin-embedded Adenocarcinoma of Human endometrium tissue using anti-BIN3 mouse monoclonal antibody. Heat-induced epitope retrieval by EDTA solution buffer pH 8.0 at 120°C for 3 min.



Anti-BIN3 mouse monoclonal antibody ([TA501966]) immunofluorescent staining of COS7 cells transiently transfected by pCMV6-ENTRY BIN3 ([RC203378]).



HEK293T cells transfected with either [RC203378] overexpress plasmid (Red) or empty vector control plasmid (Blue) were immunostained by anti-BIN3 antibody ([TA501966]), and then analyzed by flow cytometry.