

## Product datasheet for **TA501954BM**

### **SAMHD1 Mouse Monoclonal Antibody (HRP conjugated) [Clone ID: OTI2D7]**

#### **Product data:**

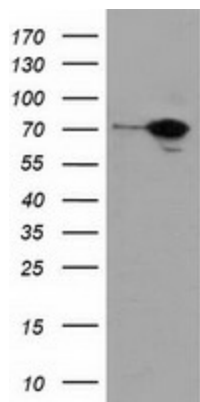
|                                |  |
|--------------------------------|--|
| <b>Product Type:</b>           | Primary Antibodies   |
| <b>Clone Name:</b>             | OTI2D7   |
| <b>Applications:</b>           | FC, IF, WB   |
| <b>Recommended Dilution:</b>   | WB 1:2000, IF 1:100, FLOW 1:100  |
| <b>Reactivity:</b>             | Human  |
| <b>Host:</b>                   | Mouse  |
| <b>Isotype:</b>                | IgG2b  |
| <b>Clonality:</b>              | Monoclonal   |
| <b>Immunogen:</b>              | Full length human recombinant protein of human SAMHD1 (NP_056289) produced in HEK293T cell.  |
| <b>Formulation:</b>            | PBS (pH 7.3) containing 1% BSA, 50% glycerol.  |
| <b>Concentration:</b>          | 0.5 mg/ml  |
| <b>Purification:</b>           | Purified from mouse ascites fluids or tissue culture supernatant by affinity chromatography (protein A/G)  |
| <b>Conjugation:</b>            | HRP  |
| <b>Storage:</b>                | Store at -20°C as received.  |
| <b>Stability:</b>              | Stable for 12 months from date of receipt.   |
| <b>Predicted Protein Size:</b> | 72 kDa   |
| <b>Gene Name:</b>              | SAM and HD domain containing deoxynucleoside triphosphate triphosphohydrolase 1  |
| <b>Database Link:</b>          | <a href="#">NP_056289</a><br><a href="#">Entrez Gene 25939 Human</a><br><a href="#">Q9Y3Z3</a>   |
| <b>Background:</b>             | This gene may play a role in regulation of the innate immune response. The encoded protein is upregulated in response to viral infection and may be involved in mediation of tumor necrosis factor-alpha proinflammatory responses. Mutations in this gene have been associated with Aicardi-Goutieres syndrome. [provided by RefSeq]. COMPLETENESS: complete on the 3' end. |



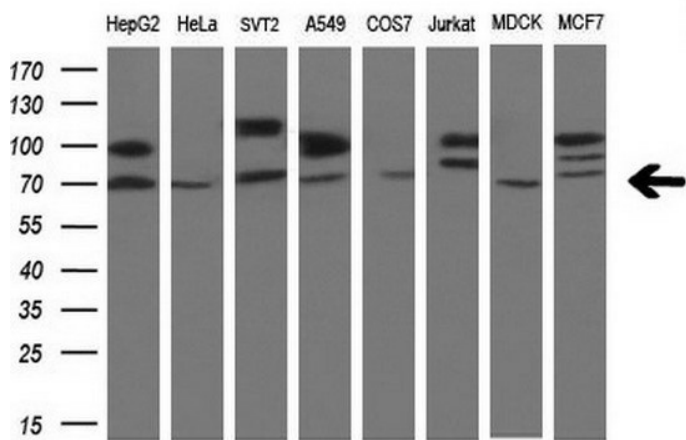
[View online »](#)

Synonyms: CHBL2; DCIP; HDDC1; MOP-5; SBB188

**Product images:**



HEK293T cells were transfected with the pCMV6-ENTRY control (Left lane) or pCMV6-ENTRY SAMHD1 ([RC206013], Right lane) cDNA for 48 hrs and lysed. Equivalent amounts of cell lysates (5 ug per lane) were separated by SDS-PAGE and immunoblotted with anti-SAMHD1. Positive lysates [LY414526] (100ug) and [LC414526] (20ug) can be purchased separately from OriGene.



Western blot analysis of extracts (10ug) from 8 different cell lines by using anti-SAMHD1 monoclonal antibody at 1:200 dilution.

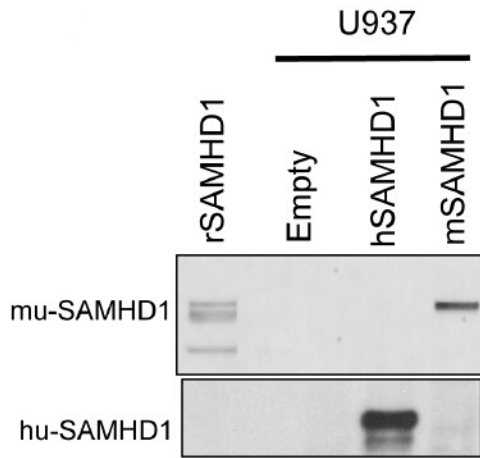
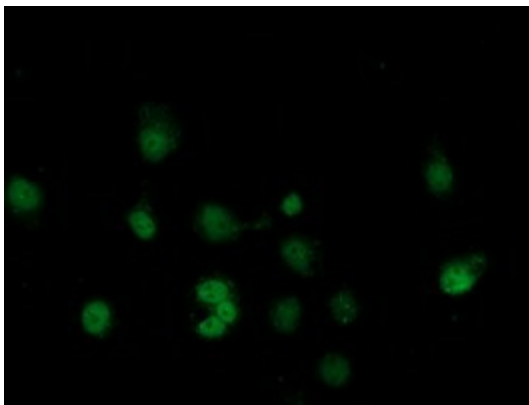
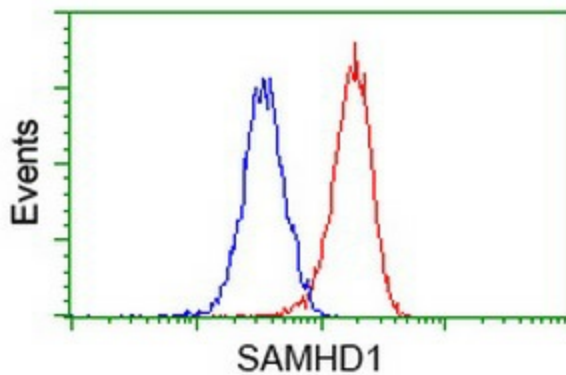


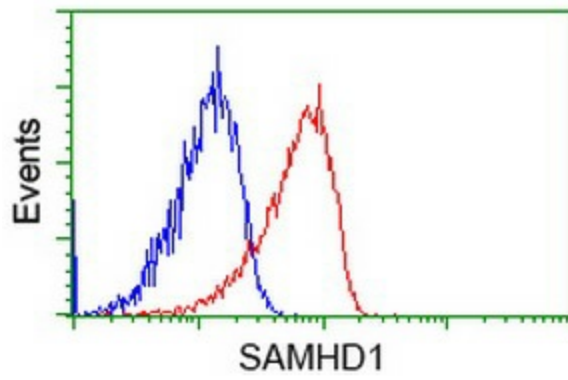
Figure from citation: Western Blot of SAMHD1 protein level by using anti-SAMHD1 antibody in lysates from parental U937 or U937 expressing human or mouse SAMHD1. Dilution: 1:1000 [View Citation](#)



Anti-SAMHD1 mouse monoclonal antibody ([TA501954]) immunofluorescent staining of COS7 cells transiently transfected by pCMV6-ENTRY SAMHD1 ([RC206013]).



Flow cytometric Analysis of HeLa cells, using anti-SAMHD1 antibody ([TA501954]), (Red), compared to a nonspecific negative control antibody (TA50011), (Blue).



Flow cytometric Analysis of Jurkat cells, using anti-SAMHD1 antibody ([TA501954]), (Red), compared to a nonspecific negative control antibody (TA50011), (Blue).