

## Product datasheet for **TA501954AM**

### **SAMHD1 Mouse Monoclonal Antibody (Biotin conjugated) [Clone ID: OTI2D7]**

#### **Product data:**

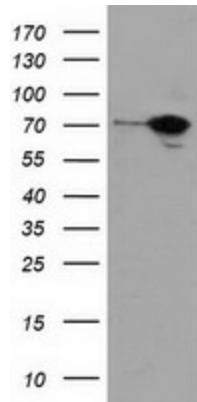
<b>Product Type:</b>	Primary Antibodies
<b>Clone Name:</b>	OTI2D7
<b>Applications:</b>	FC, IF, WB
<b>Recommended Dilution:</b>	WB 1:2000, IF 1:100, FLOW 1:100
<b>Reactivity:</b>	Human
<b>Host:</b>	Mouse
<b>Isotype:</b>	IgG2b
<b>Clonality:</b>	Monoclonal
<b>Immunogen:</b>	Full length human recombinant protein of human SAMHD1 (NP_056289) produced in HEK293T cell.
<b>Formulation:</b>	PBS (pH 7.3) containing 1% BSA, 50% glycerol and 0.02% sodium azide.
<b>Concentration:</b>	0.5 mg/ml
<b>Purification:</b>	Purified from mouse ascites fluids or tissue culture supernatant by affinity chromatography (protein A/G)
<b>Conjugation:</b>	Biotin
<b>Storage:</b>	Store at -20°C as received.
<b>Stability:</b>	Stable for 12 months from date of receipt.
<b>Predicted Protein Size:</b>	72 kDa
<b>Gene Name:</b>	SAM and HD domain containing deoxynucleoside triphosphate triphosphohydrolase 1
<b>Database Link:</b>	<a href="#">NP_056289</a> <a href="#">Entrez Gene 25939 Human</a> <a href="#">Q9Y3Z3</a>
<b>Background:</b>	This gene may play a role in regulation of the innate immune response. The encoded protein is upregulated in response to viral infection and may be involved in mediation of tumor necrosis factor-alpha proinflammatory responses. Mutations in this gene have been associated with Aicardi-Goutieres syndrome. [provided by RefSeq]. COMPLETENESS: complete on the 3' end.



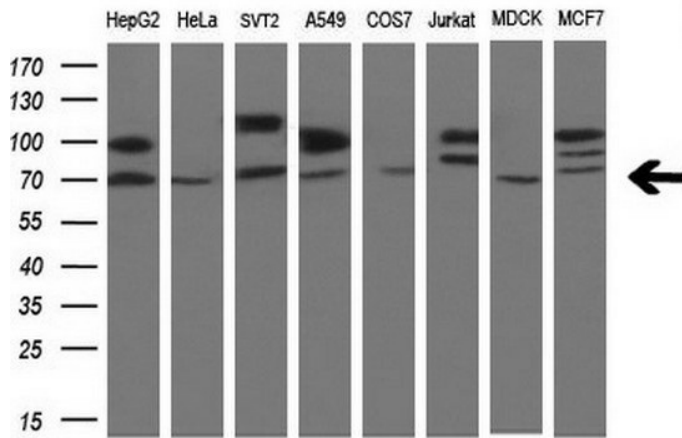
[View online »](#)

Synonyms: CHBL2; DCIP; HDDC1; MOP-5; SBBI88

**Product images:**



HEK293T cells were transfected with the pCMV6-ENTRY control (Left lane) or pCMV6-ENTRY SAMHD1 ([RC206013], Right lane) cDNA for 48 hrs and lysed. Equivalent amounts of cell lysates (5 ug per lane) were separated by SDS-PAGE and immunoblotted with anti-SAMHD1. Positive lysates [LY414526] (100ug) and [LC414526] (20ug) can be purchased separately from OriGene.



Western blot analysis of extracts (10ug) from 8 different cell lines by using anti-SAMHD1 monoclonal antibody at 1:200 dilution.

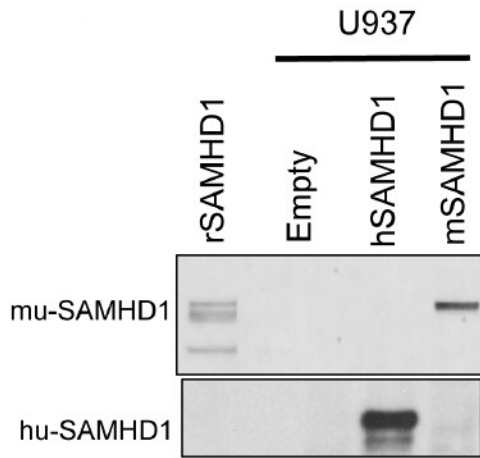
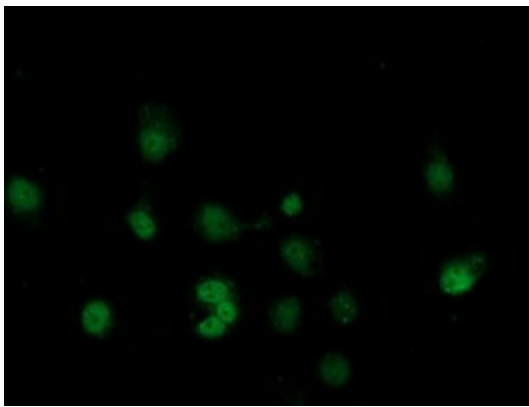
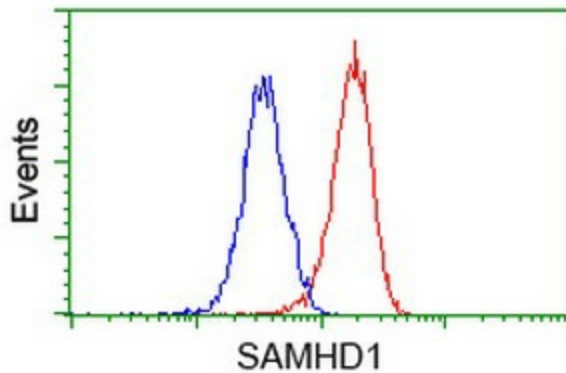


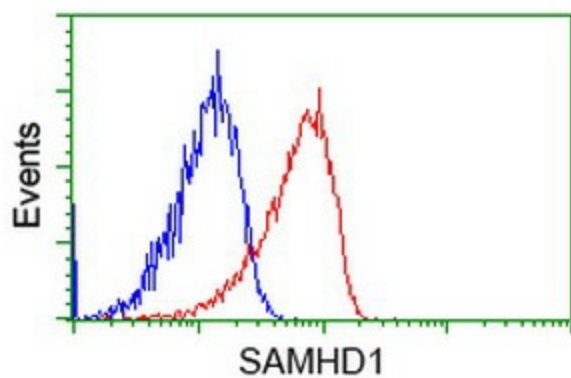
Figure from citation: Western Blot of SAMHD1 protein level by using anti-SAMHD1 antibody in lysates from parental U937 or U937 expressing human or mouse SAMHD1. Dilution: 1:1000 [View Citation](#)



Anti-SAMHD1 mouse monoclonal antibody ([TA501954]) immunofluorescent staining of COS7 cells transiently transfected by pCMV6-ENTRY SAMHD1 ([RC206013]).



Flow cytometric Analysis of HeLa cells, using anti-SAMHD1 antibody ([TA501954]), (Red), compared to a nonspecific negative control antibody (TA50011), (Blue).



Flow cytometric Analysis of Jurkat cells, using anti-SAMHD1 antibody ([TA501954]), (Red), compared to a nonspecific negative control antibody (TA50011), (Blue).