

Product datasheet for **TA501947**

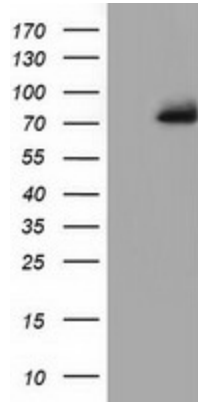
PPWD1 Mouse Monoclonal Antibody [Clone ID: OTI1B8]

Product data:

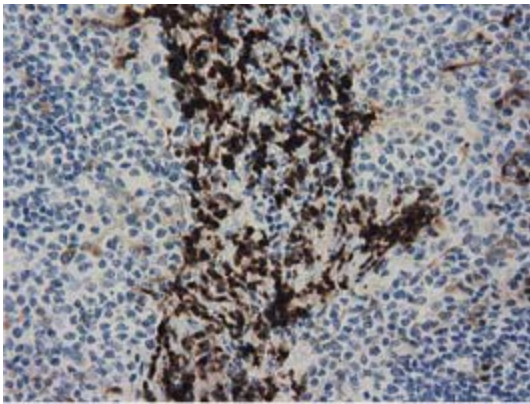
| | |
|-------------------------|--|
| Product Type: | Primary Antibodies |
| Clone Name: | OTI1B8 |
| Applications: | FC, IF, IHC, WB |
| Recommended Dilution: | WB 1:200~500, IF 1:100, FLOW 1:100, IHC: 1:150 |
| Reactivity: | Human, Mouse, Rat |
| Host: | Mouse |
| Isotype: | IgG1 |
| Clonality: | Monoclonal |
| Immunogen: | Full length human recombinant protein of human PPWD1 (NP_056157) produced in HEK293T cell. |
| Formulation: | PBS (pH 7.3) containing 1% BSA, 50% glycerol and 0.02% sodium azide. |
| Concentration: | 0.68 mg/ml |
| Purification: | Purified from mouse ascites fluids or tissue culture supernatant by affinity chromatography (protein A/G) |
| Conjugation: | Unconjugated |
| Storage: | Store at -20°C as received. |
| Stability: | Stable for 12 months from date of receipt. |
| Predicted Protein Size: | 73.4 kDa |
| Gene Name: | peptidylprolyl isomerase domain and WD repeat containing 1 |
| Database Link: | NP_056157 Entrez Gene 238831 Mouse Entrez Gene 294711 Rat Entrez Gene 23398 Human Q96BP3 |
| Synonyms: | KIAA0073 |



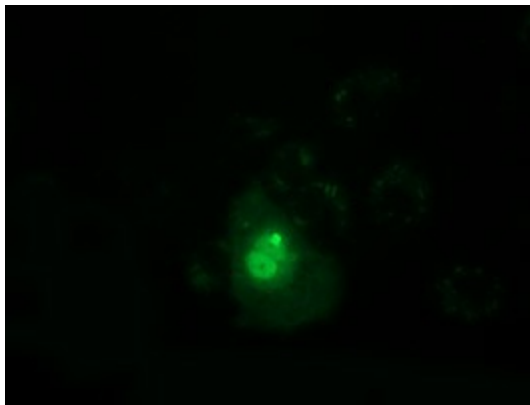
[View online »](#)

Product images:

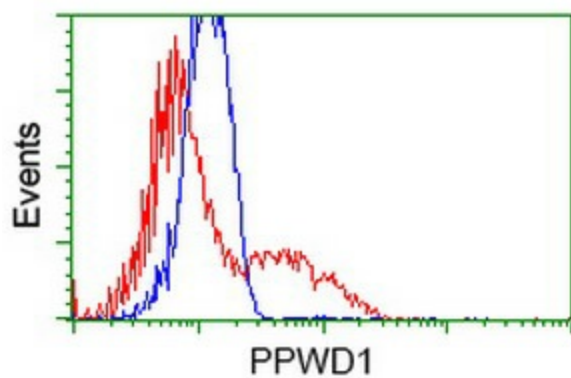
HEK293T cells were transfected with the pCMV6-ENTRY control (Left lane) or pCMV6-ENTRY PPWD1 ([RC204570], Right lane) cDNA for 48 hrs and lysed. Equivalent amounts of cell lysates (5 ug per lane) were separated by SDS-PAGE and immunoblotted with anti-PPWD1. Positive lysates [LY414604] (100ug) and [LC414604] (20ug) can be purchased separately from OriGene.



Immunohistochemical staining of paraffin-embedded Human lymph node tissue within the normal limits using anti-PPWD1 mouse monoclonal antibody. (TA501947)



Anti-PPWD1 mouse monoclonal antibody (TA501947) immunofluorescent staining of COS7 cells transiently transfected by pCMV6-ENTRY PPWD1 ([RC204570]).



HEK293T cells transfected with either [RC204570] overexpress plasmid (Red) or empty vector control plasmid (Blue) were immunostained by anti-PPWD1 antibody (TA501947), and then analyzed by flow cytometry.